

# 2021 IN REVIEW



# WE PASSED A LEVY

## Thank you Voters!



On November 2, Delaware County voters approved a 10-year, 0.4-mill (additional) levy for the purpose of acquiring land for future parks and developing and improving park sites.

The new levy will cost a homeowner \$1.16/month each year, per \$100,000 in home market value and provide \$3.7M in funding a year resulting in \$37 million over 10 years.

# We Opened 2 Parks!



**Sycamore Run Park**  
**Hickory Woods Park**



# Sycamore Run Park

Kayak / Canoe Access

Olentangy River Road & Home Road

Liberty Township – 22 acres





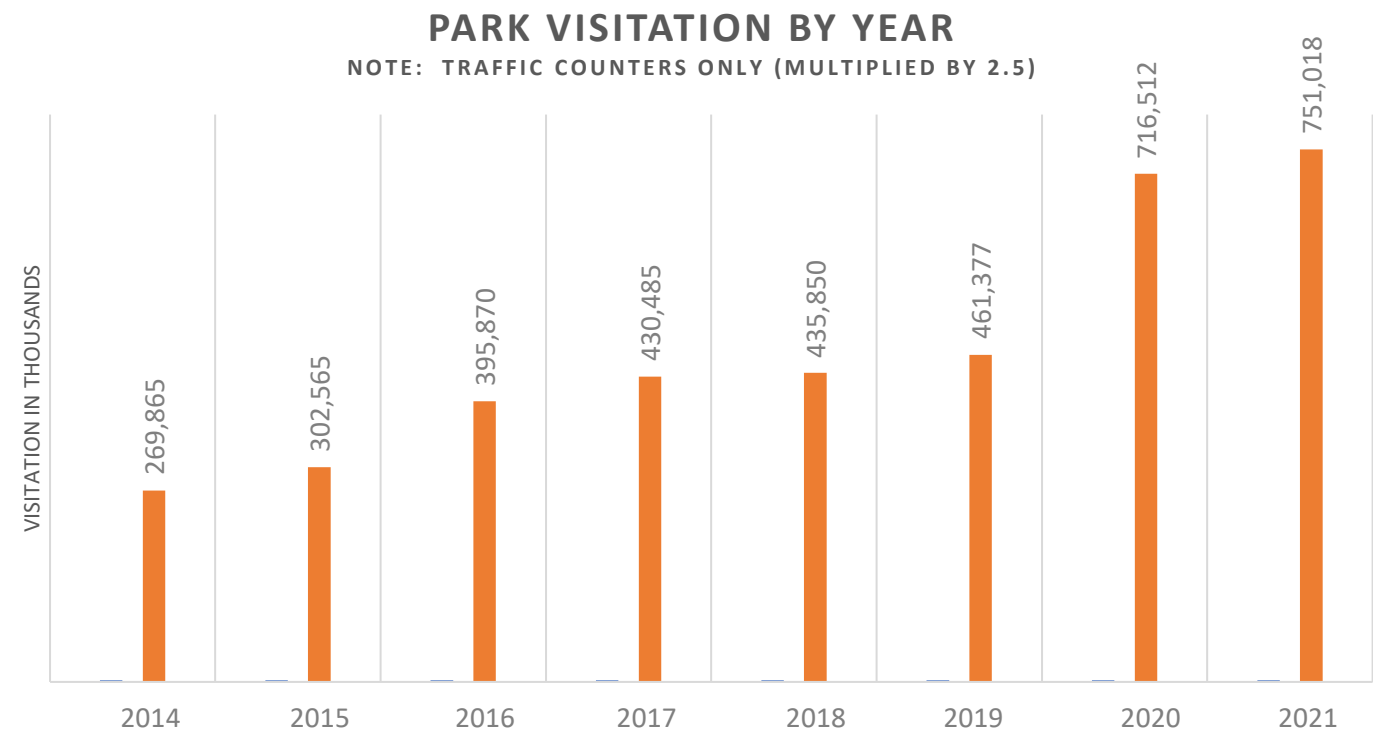
# HICKORY WOODS PARK

1271 Pollock Road, Delaware Township, 115 acres





# Park Visitation By Year



**Note:** HRP traffic counter was added in 2021 with visitation estimated at 98,510 visitors.  
If subtracted for more accurate comparison with previous years, 2021 visitation = 652,508



Trail Counters (Ohio to Erie Trail) added in 2021 = 43,407

# Land Acquisition

McCammon Creek Park Ph 6 (27 acres)

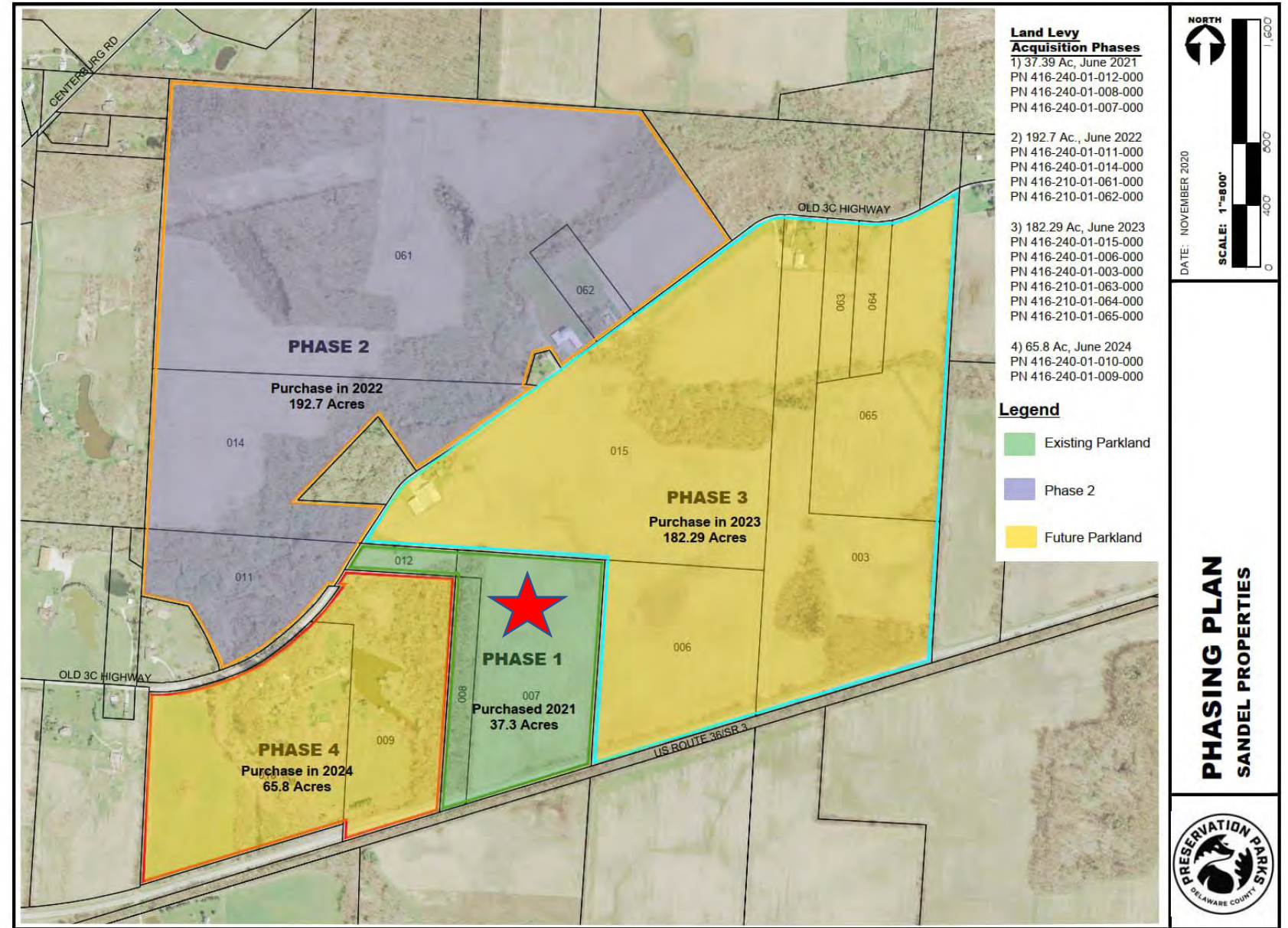
Total park = 226.5 acres





# Land Acquisition

Sandel Property Phase 1 (+- 37 acres)



# Grant Applications + Status

- **Clean Ohio Trail Fund:** PPDC awarded \$316,500 for the Ohio to Erie Trail. 2022 project announcement of awardees pending
- **Recreational Trail Program Fund:** McCammon Creek pedestrian bridge project submitted. 2022 project announcement of awardees pending
- **Land and Water Conservation Fund:** Expansion of Deer Haven Park (\$375,000).
- **Clean Ohio Greenspace Conservation Fund:** Applied for acquisition and restoration of 59 acres of Sandal/Perfect Creek Phase 2; project recommended for funding (\$454,309) from Ohio Public Works Commission).
- **State CIP Funding-** PPDC awarded \$450,000 for Ohio to Erie Trail Projects
- **ODOT Metro Park Fund -** \$78,332 used for construction of Char-Mar Ridge Parking Lot project
- **Community Trail Improvement Grant:** Village of Sunbury and Liberty Township constructed additional multi-use trail in Delaware County



# Preservation Parks Foundation

- 2 new board members, 1 member left, bringing total to 8
- \$41,580.00 received by the Foundation in 2021 (up from \$18,861 in 2020)
- Forming a Capital Campaign Steering Committee for the Bicentennial Barn





# Park & Facility Improvements





# McCammon Creek Park

## Stream Restoration



This project was funded in part through a grant from the United States Environmental Protection Agency through an assistance agreement with the Ohio Environmental Protection Agency.

3<sup>rd</sup> Place Award: Ohio Parks & Recreation



# DEER HAVEN PARK

## Aviary Opening

A partnership with Ohio Nature Education





# 2021 Park Improvements



Char-Mar Ridge Parking lot expansion



Entrance Signs



Gallant Farm  
Granary Overhangs



River Run Park Chip Seal



# Gallant Farm



New corn crib  
constructed by staff



Expanded fencing for  
additional livestock



Mud room  
enhancements



# 2021 Park Improvements

## BCP Shelter Roof Replacements





# 2021 Park Improvements

## Mindfulness Walk





A person wearing a yellow shirt and a helmet is riding a bicycle on a paved trail that stretches into the distance, flanked by dense green trees and foliage. The scene is bright and sunny, with dappled light on the path.

## OHIO TO ERIE TRAIL

15+/- miles completed in Delaware  
County

7 miles owned/managed by PPDC

0.6 remaining miles to be completed



### Legend

Existing On-Road Route



Existing Asphalt Trail



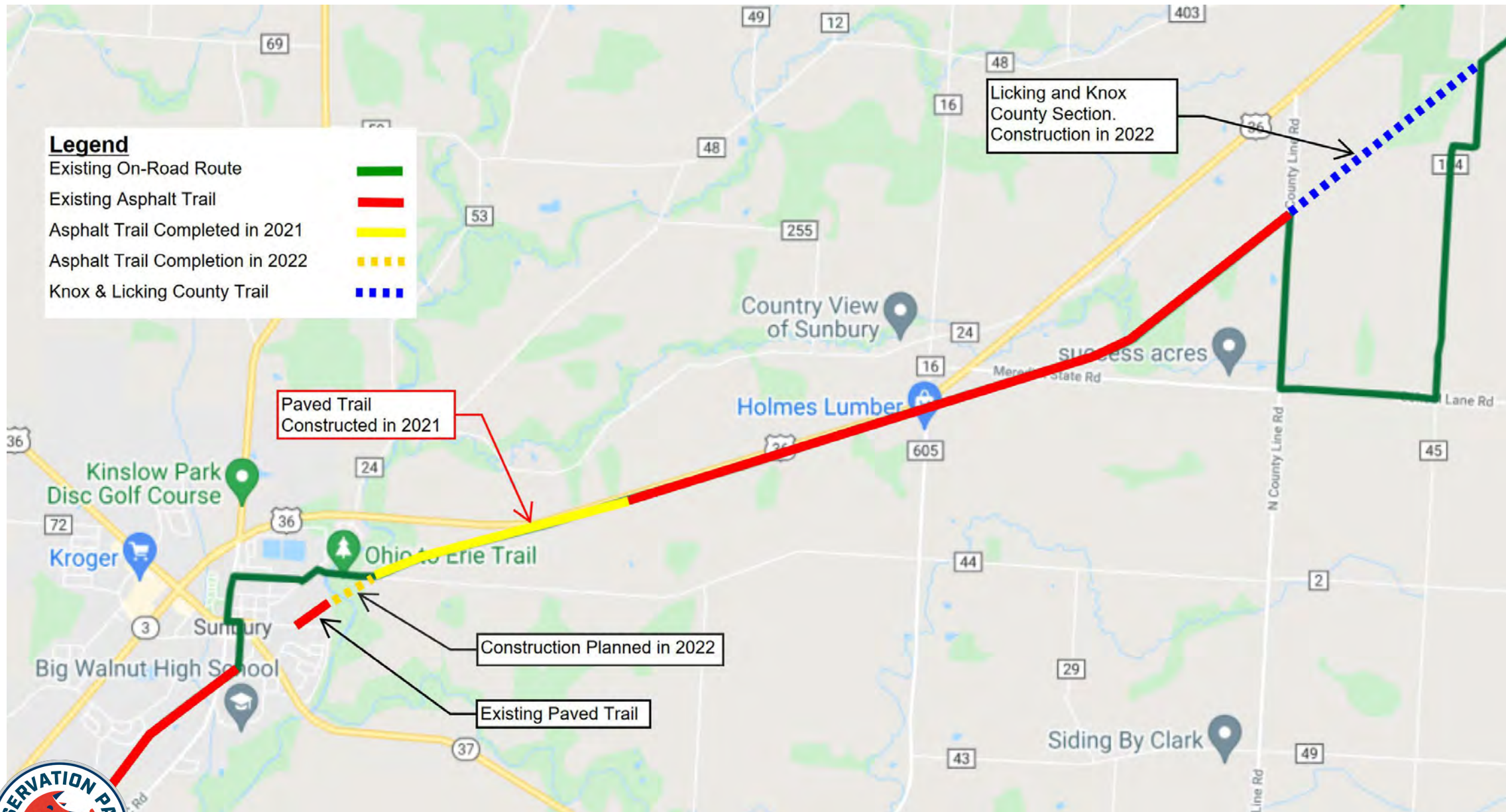
Asphalt Trail Completed in 2021



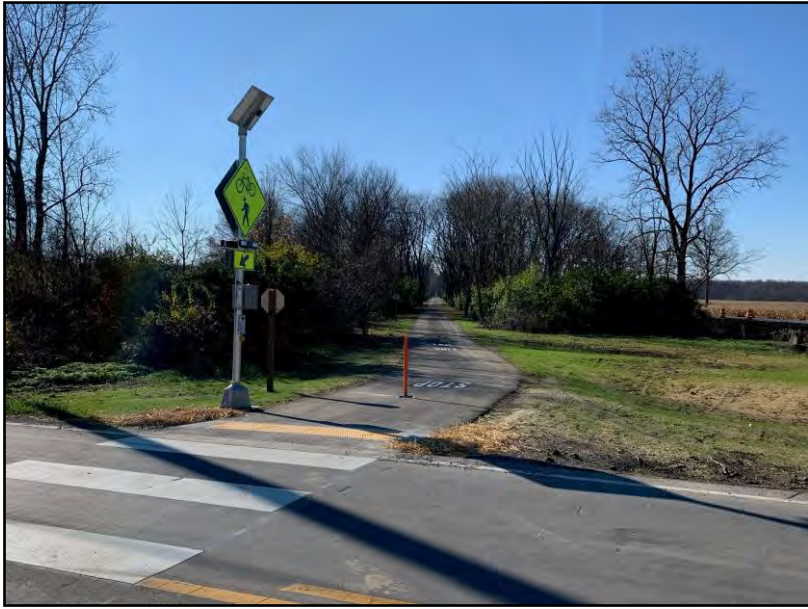
Asphalt Trail Completion in 2022



Knox & Licking County Trail







# Ohio to Erie Trail

Grant funding since 2015: **\$2,737,500**

(acquisition, design, construction)



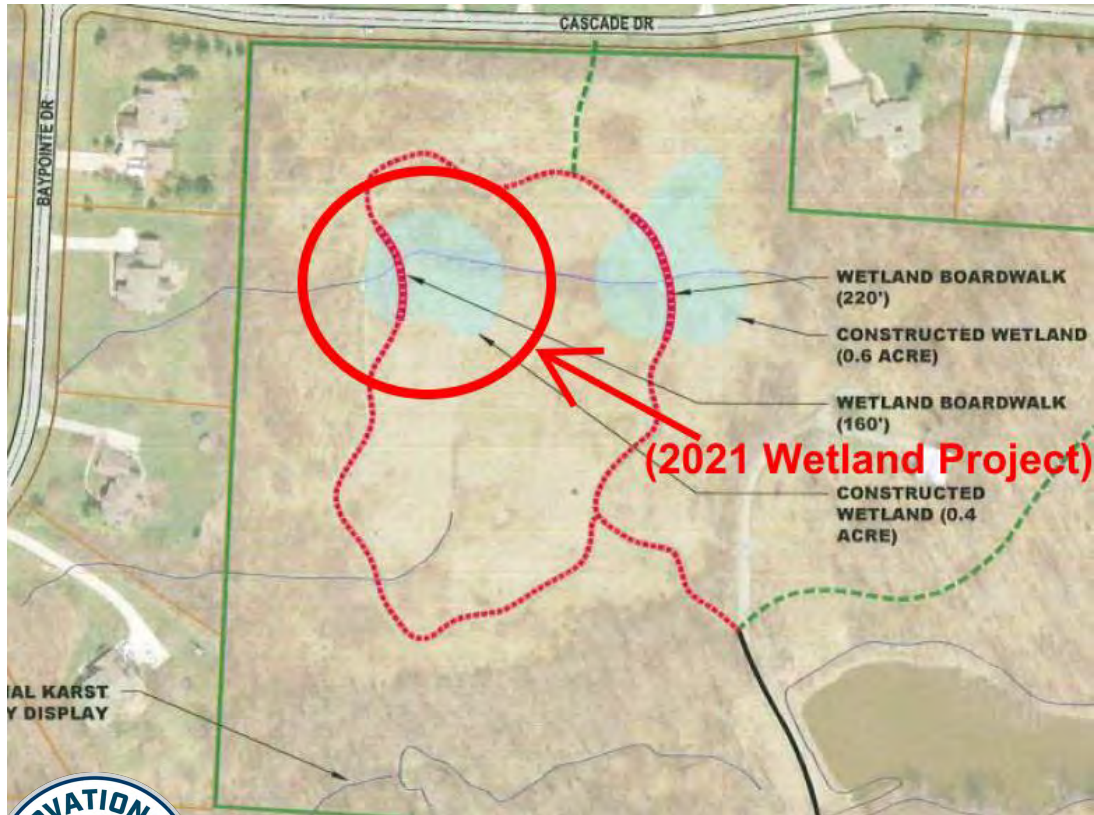


# Natural Resources in Review



# 2021 Restoration

- Constructed a 1/3-acre wetland at Emily Traphagen Park
- Current wetland acreage totals to 14.33 acres





# RESTORATION

- 40,000 seedling trees planted
- 72 B & B trees planted
- 40 acres of native seeding
- Disrupted drain tile at McCammon Creek Park
- Prescribed burns in 5 parks
- 150 acres of invasive plant management (prairies & woodlands)
- 14 acres of invasive plant management in wetlands





# Volunteer Stewardship



Delaware Christian students removing honeysuckle at Deer Haven Park



Volunteers collecting prairie seed at McCammon Creek Park





# Volunteer Stewardship



Calley Pear removal at McCammon Creek Park by the Postle family





# Nest Box Success

In 2021, staff and volunteer monitors reported the successful fledging of:

- 97 Eastern Bluebirds
- 305 Tree Swallows
- 209 Purple Martins
- 12 House Wrens
- 11 Caroline Chickadees





# Education & Programs In Review





# EDUCATION & OUTREACH



- Resumed in-person programming in July
- Officially opened the Deer Haven Park Aviary
- Rolled out RecDesk online registration/reservation platform
- Created outdoor “Science Says” themed exhibits in 3 parks



Hawks in new Aviary



Dinosaurs at Emily Traphagen Park



Summer Letterbox





# Self-Guided Programs

Adventure & Discovery



1,422 Registered  
Walked 33,698 miles



1,100 plus Participants



Outdoor exhibits at  
ETP, DHP, & BCP



Winter  
Letterbox

2,262 Participants



Story Trail at ETP, DHP, & BCP





# Gallant Farm

- Introduced cow and calf to farm
- Created self-guided farmhouse tour
- Created crop demonstration plots
- Added a Little Library constructed by volunteer



Farmhouse Tour Video



Little Library



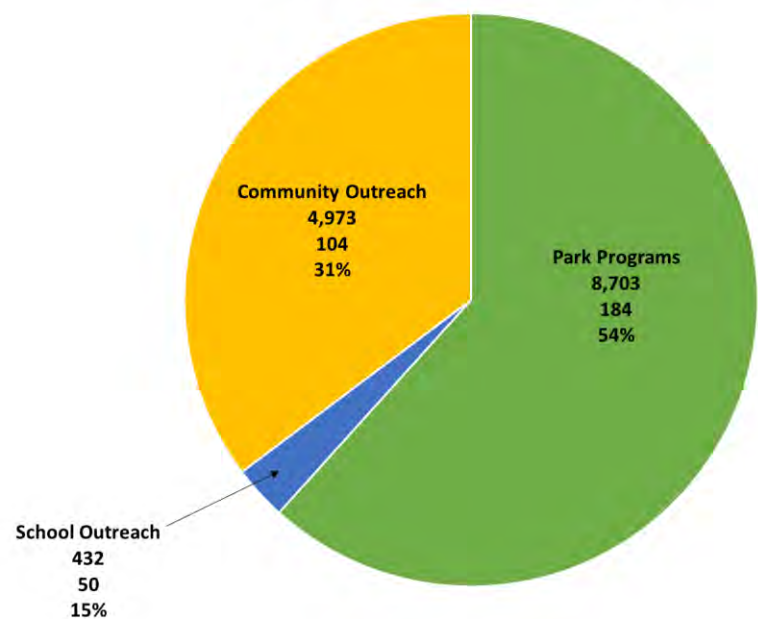
New cows at farm





# Program & Facility Stats

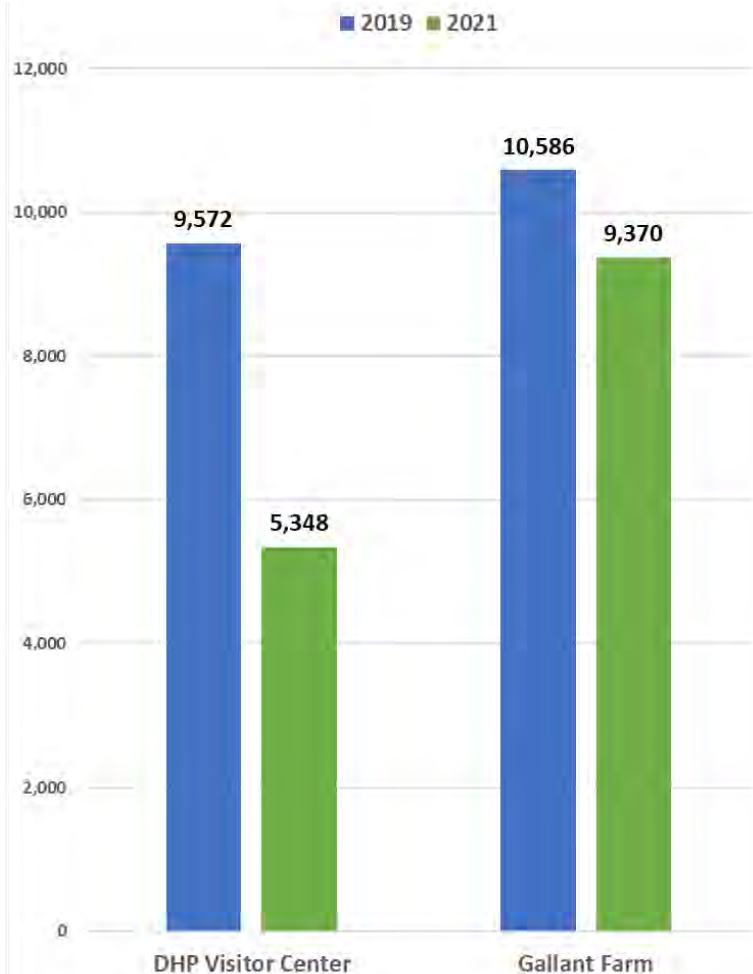
2021 Program Breakdown



Comparative Program Stats  
2019 vs. 2021



Comparative Education Facility Stats  
2019 vs. 2021



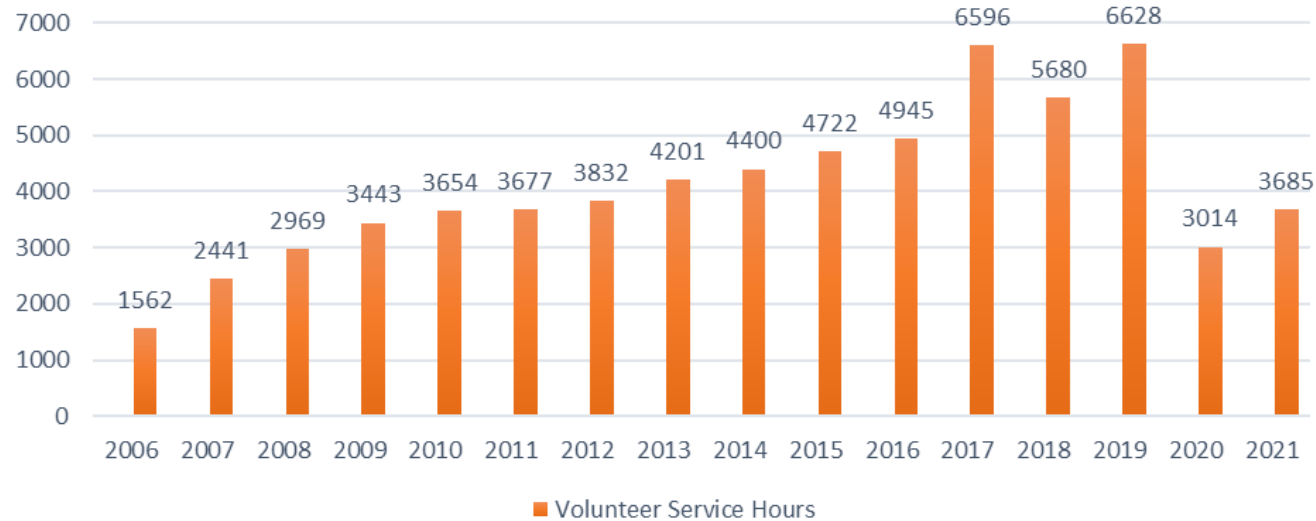


# Volunteers in the Parks (VIP)

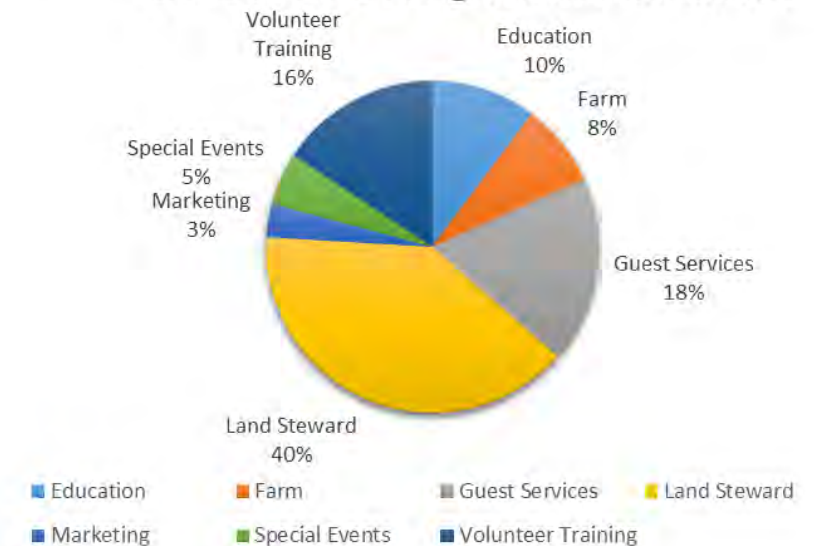
- 147 active volunteers who provided 3,685 hours
- 53 new volunteers were onboarded



Volunteer Service Hours Across the Years



2021 Service Assignment Distribution





# Marketing In Review





# LEVY INFORMATION

## Postcard & Handout

THIS NOVEMBER,  
WE'RE ON THE  
BALLOT

Delaware County voters will have the opportunity to approve a 10-year, 0.4-mill (additional) levy for the purpose of acquiring land for future parks and developing and improving park sites.



**UPCOMING PROGRAMS**  
preservationparks.recdesk.com/Community/Calendar

November 7	Photography Contest Deadline
December 4	Winter Evening on the Farm
Mid-December	Winter Letterbox Adventure
January 1	New Year's Day Hike
January-March	Winter 100 Challenge
February 19	Birds and Brews

THIS NOVEMBER,  
WE'RE ON THE  
BALLOT



**UPCOMING PROGRAMS**  
preservationparks.recdesk.com/Community/Calendar

November 7	Photography Contest Deadline
December 4	Winter Evening on the Farm
Mid-December	Winter Letterbox Adventure
January 1	New Year's Day Hike
January-March	Winter 100 Challenge
February 19	Birds and Brews

## Video



## Articles

POSTED ON [SEPTEMBER 28, 2021](#) BY [JOSHUA KEERAN](#)

### Expanding county parks

NEWS, TOP STORIES

#### Levy would allow for more land acquisition

Submitted story



Preservation Parks of Delaware County plans to purchase an estimated 722 acres of parks and trails and accelerate the purchase of another 472 acres in Trenton Township if Delaware County voters approve a 10-year, 0.4 mill additional levy for the purpose of acquiring land for future parks and developing and improving park sites.

The levy would develop and open additional parks and trails and

LOCAL

### Election 2021: Area parks ballot issues offer enhancements and preservation of land

**Dean Narciso** The Columbus Dispatch  
Published 9:00 a.m. ET Oct. 5, 2021 | Updated 12:15 p.m. ET Oct. 8, 2021

[View Comments](#) [f](#) [t](#) [e](#) [r](#)



An established prairie at Deer Haven Park, part of Preservation Parks of Delaware County, which is asking voters to approve a new 0.4-mill levy for 10 years for land acquisition and park development. Preservation Parks



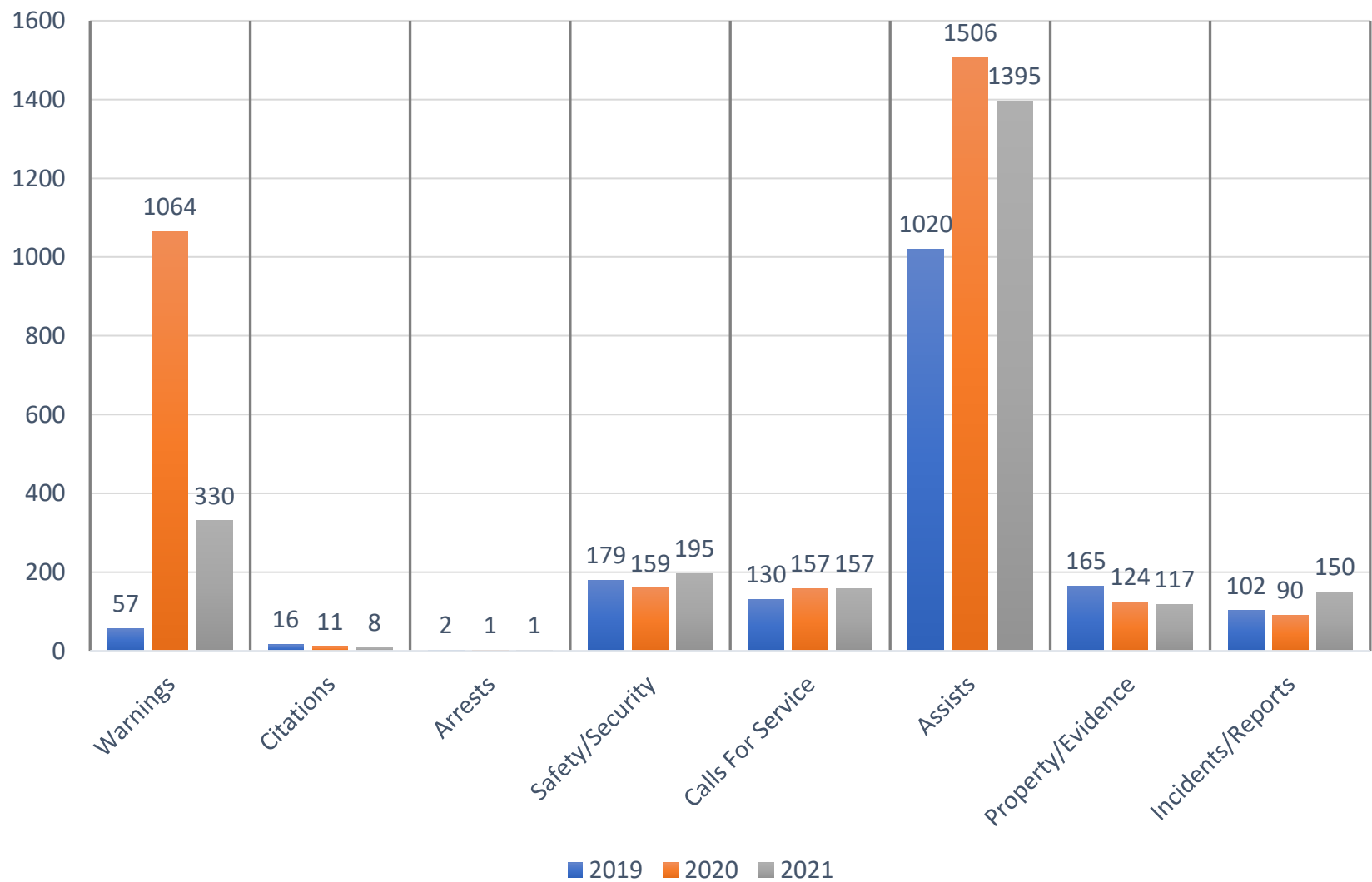


# Law Enforcement In Review



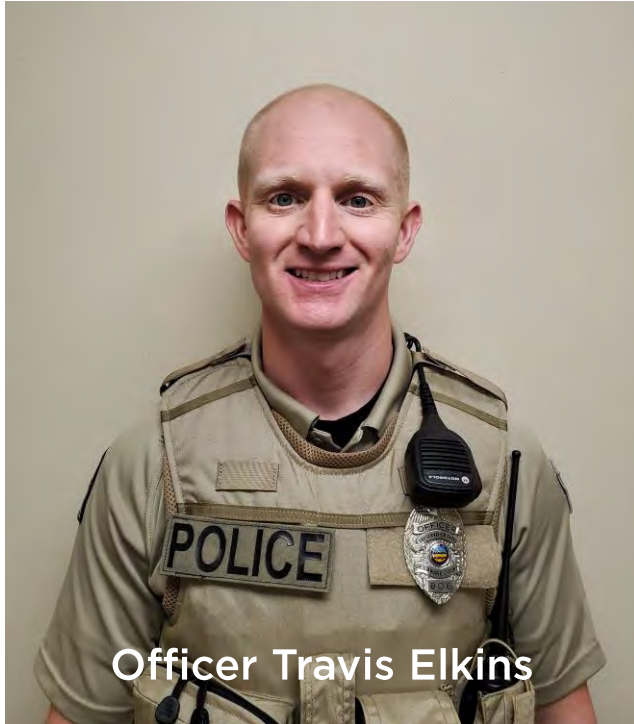


# Law Enforcement - Yearly Stats





# Law Enforcement



Officer Travis Elkins



Officer Seth Collingwood

We welcomed two new officer to our department in 2021.





# Law Enforcement

Officer Watkins initiated a donation station for MASH (Military and Service Heroes) Pantry station in Delaware

Food goods and toiletry items collected at Summer Concerts in 2021



3<sup>rd</sup> Place Award: Ohio Parks & Recreation



# Law Enforcement

Remodeled conference room into individual workspaces for each officer





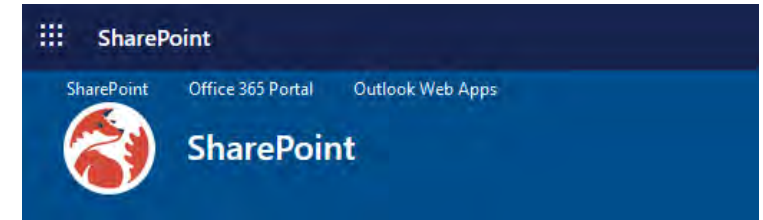
# Technology In Review





# TECHNOLOGY ACCOMPLISHMENTS

- Completed migration of all district data storage to existing cloud-based service
- Renewed IT Managed Services Provider contract for one year
- Rolled out Dashlane password management service for staff
- Began upgrading network hardware security at office locations
- IT MSP conducted annual security assessment on systems
- Provided staff training on new applications





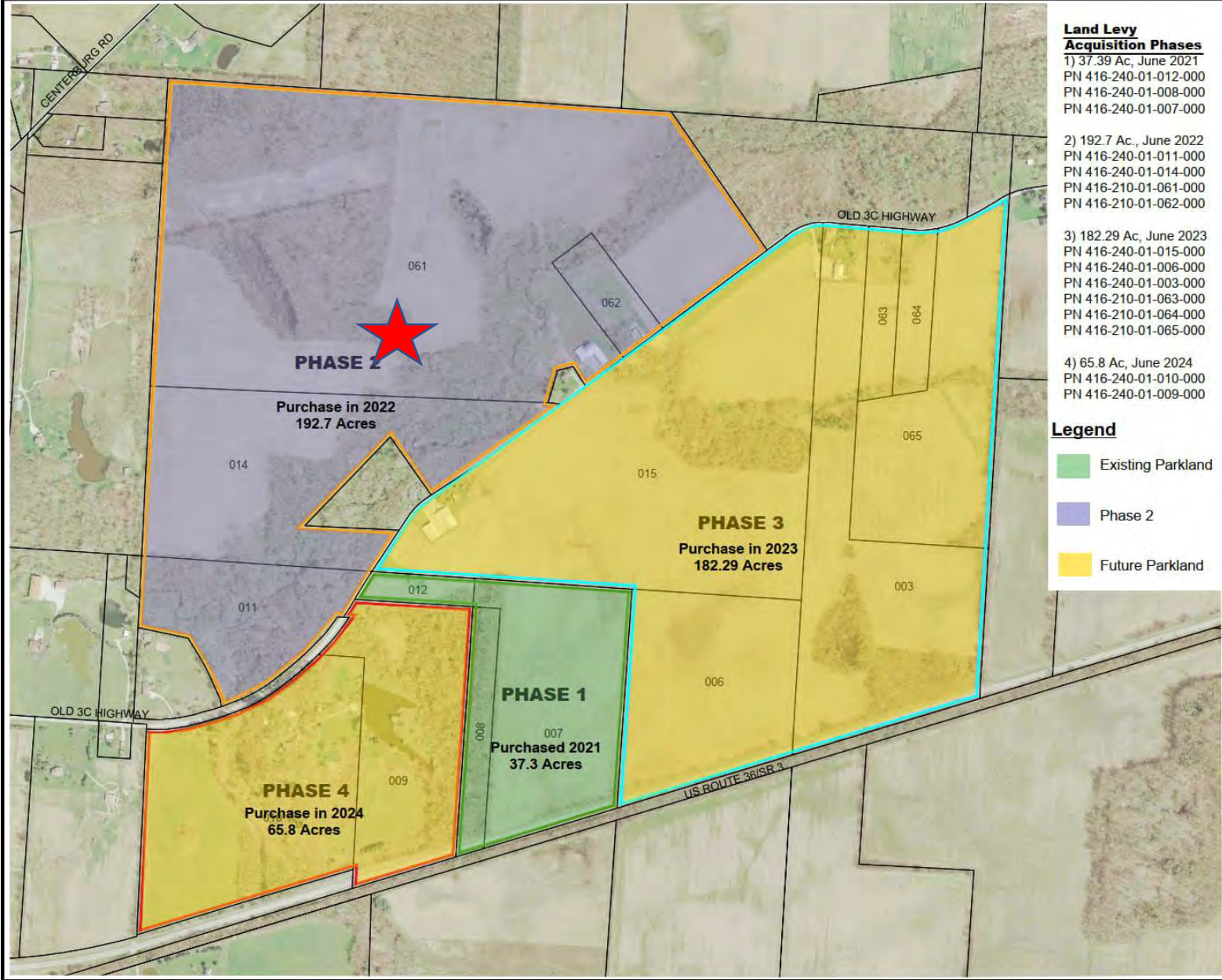
# The Year Ahead 2022



# Land Acquisition

Sandel Property Phase 2

193 acres



**PHASING PLAN**  
**SANDEL PROPERTIES**

DATE: NOVEMBER 2020

**SCALE: 1"=800'**

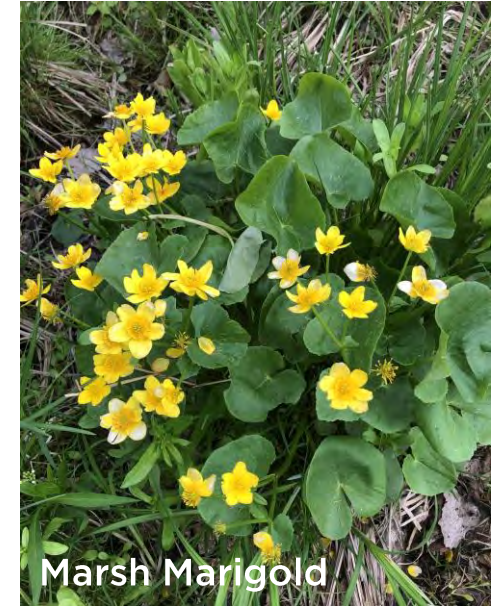
**LEGEND**

- Existing Parkland
- Phase 2
- Future Parkland

**PRESERVATION PARKS**  
DELAWARE COUNTY



# Sandel Property – Ph 2

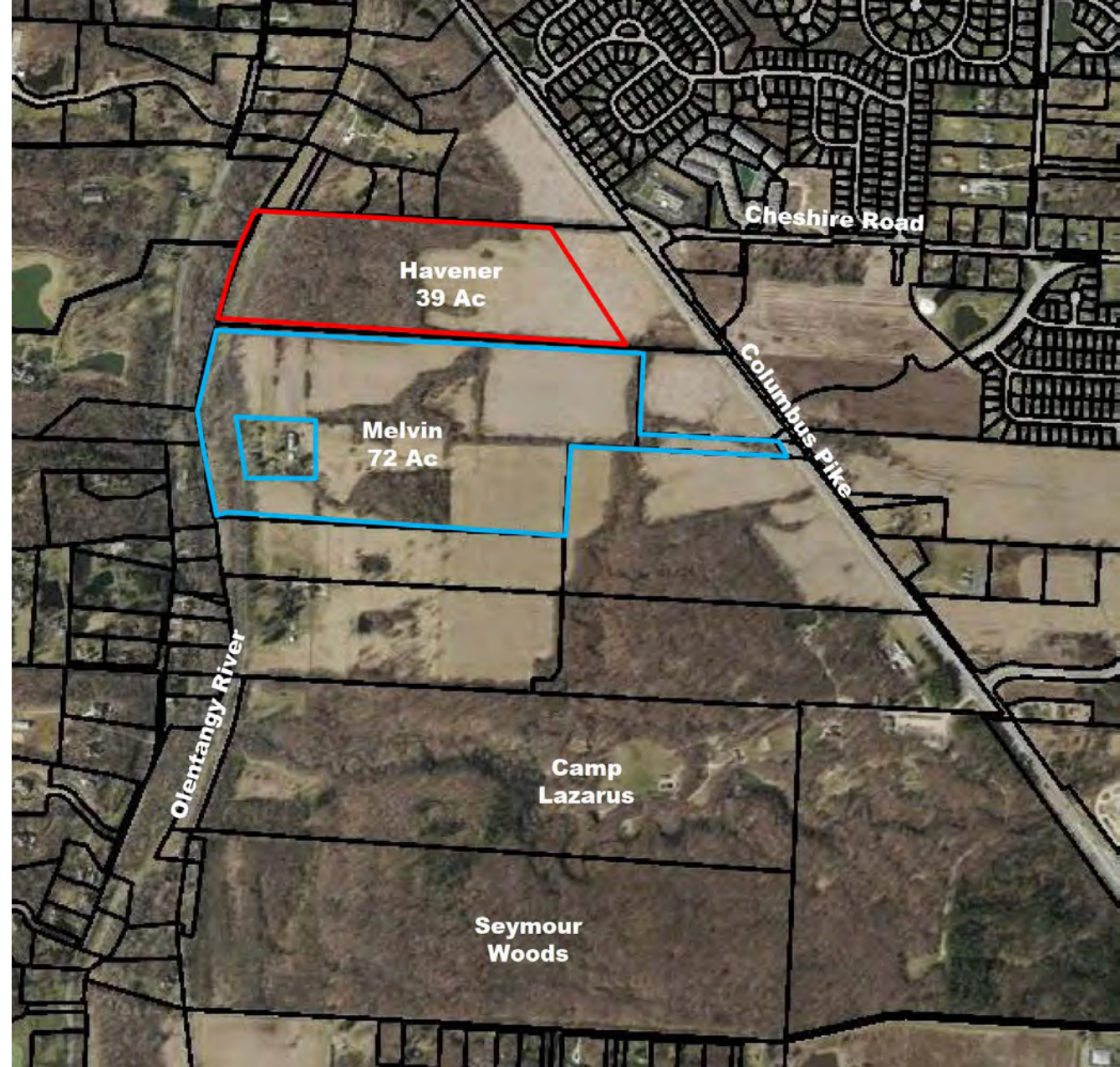




# Land Acquisition

Melvin Property - 72 acres

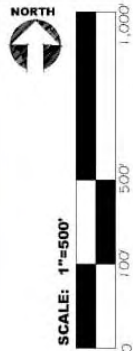
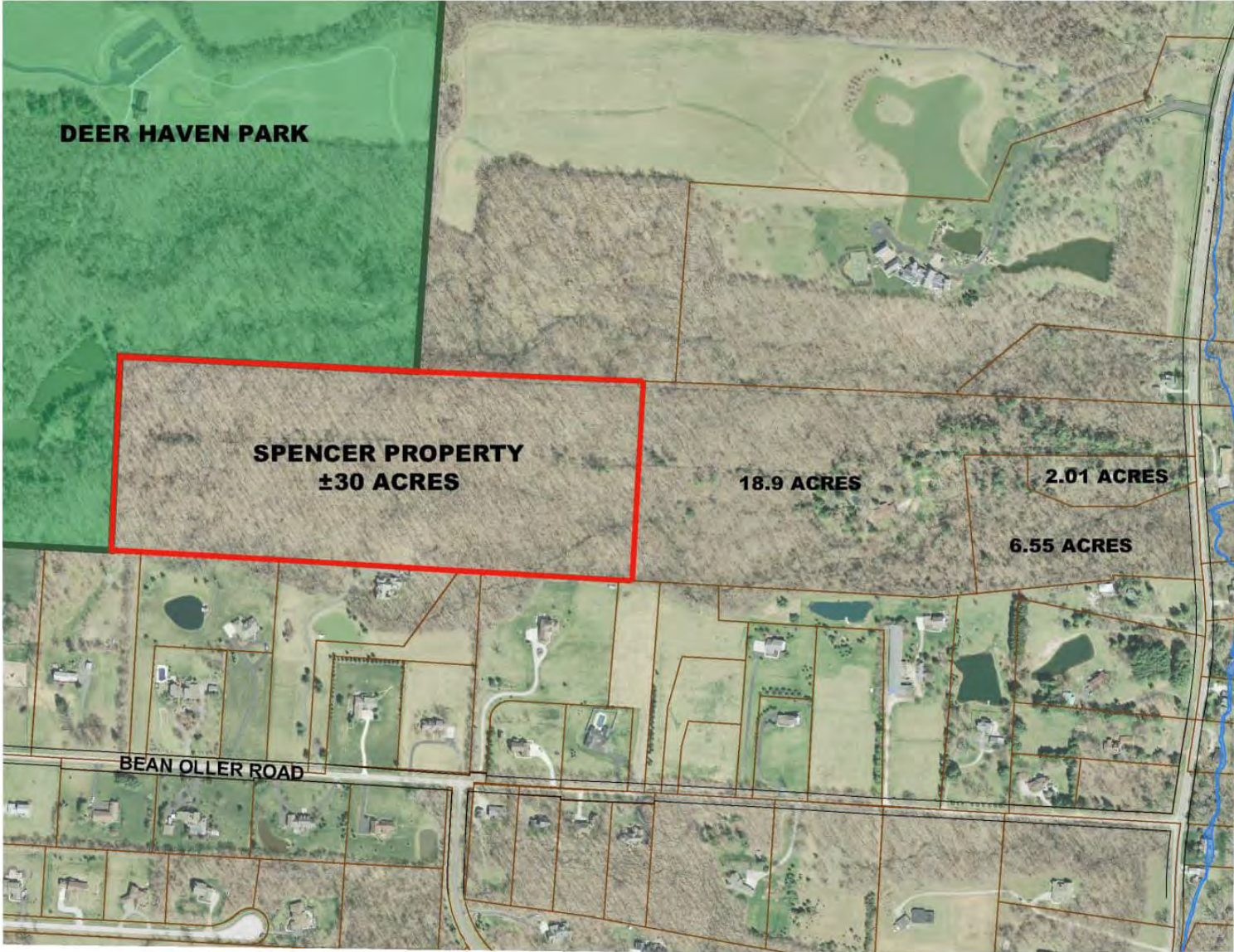
Havener Property - 2022 Clean Ohio application





# Land Acquisition

Deer Haven Expansion 30 acres



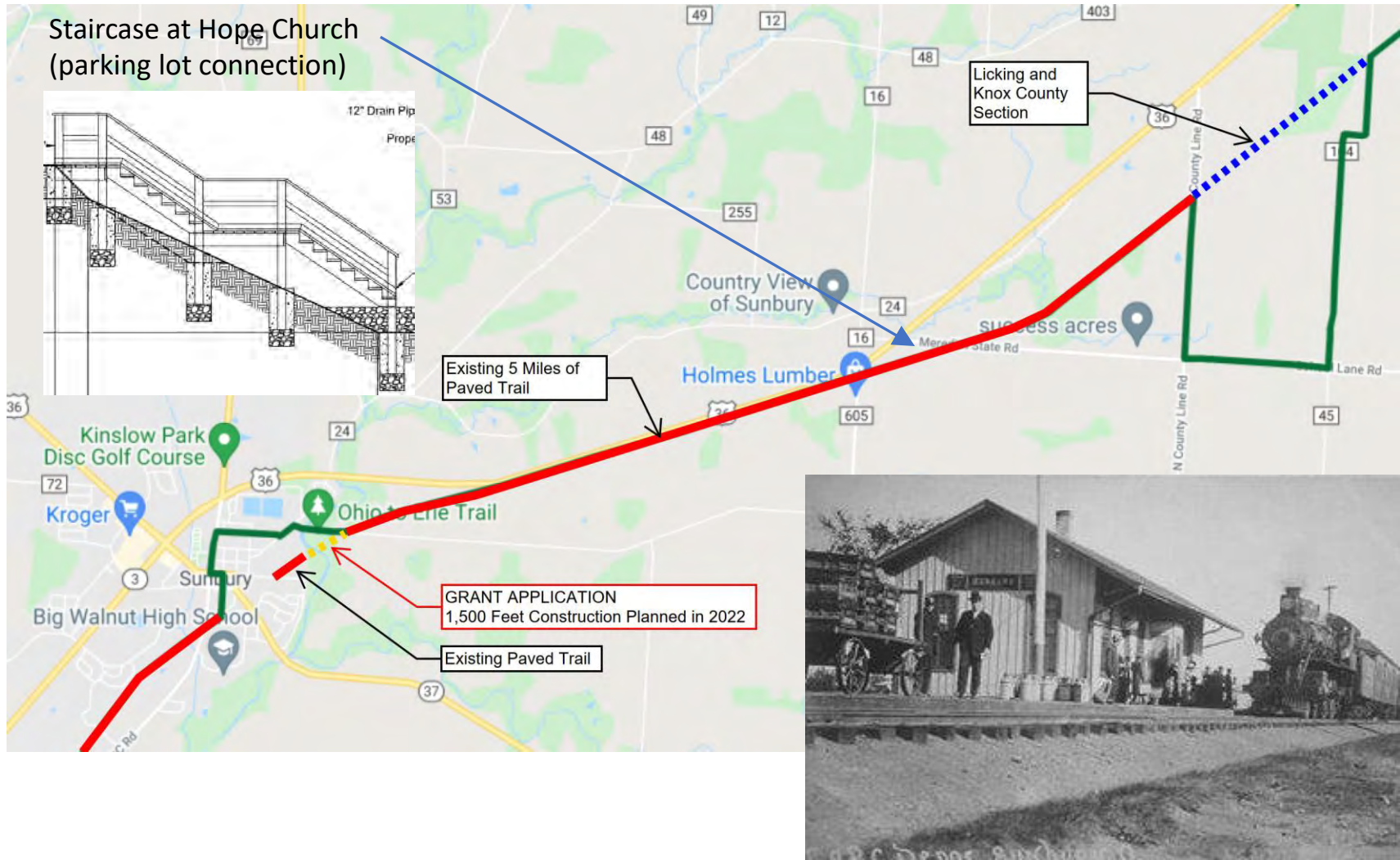
**SPENCER PROPERTY**  
4308 OLENTANGY RIVER ROAD  
DELAWARE COUNTY





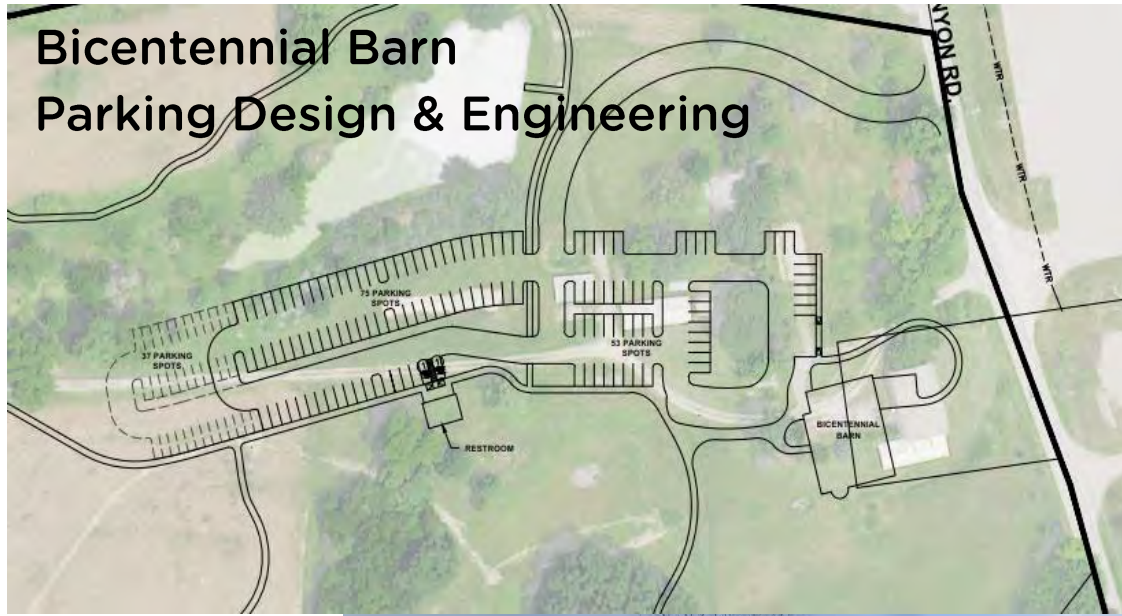
# Ohio to Erie Trail

## Design & Construction

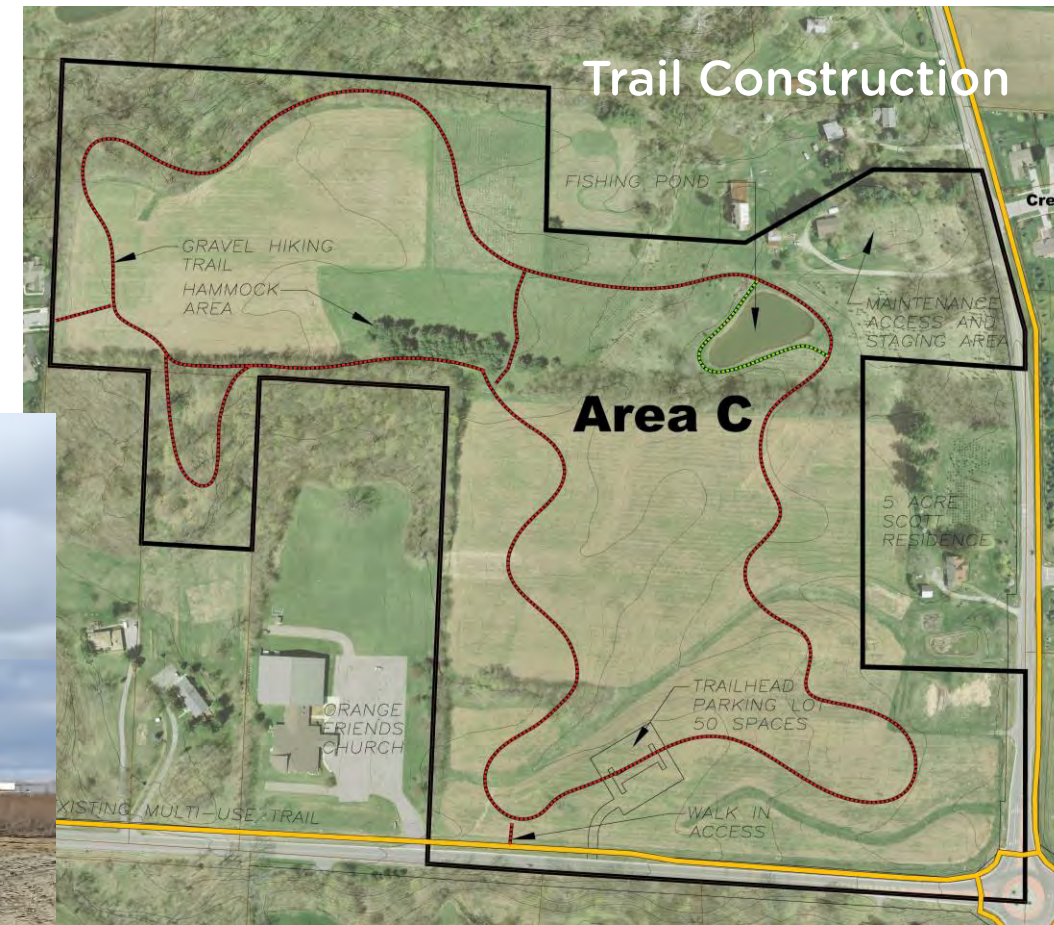




## Bicentennial Barn Parking Design & Engineering



## Trail Construction



## Pedestrian Bridge Design & Construction (Pending Grant)



# McCammon Creek Park





## Shale Hollow Park

Garage Demolition and  
Shelter Construction





# Emily Traphagen Park – Joint project Planning/Natural Resources/Park Ops





# Design Projects

## Hickory Woods Park Restroom (design to connect to future multi-purpose facility)



Char-Mar Ridge Park Shelter



Perfect Schoolhouse





# Olentangy River Multi-Use Trail Feasibility Study with the City of Delaware



## Park Entrance Signs and Logo Replacements



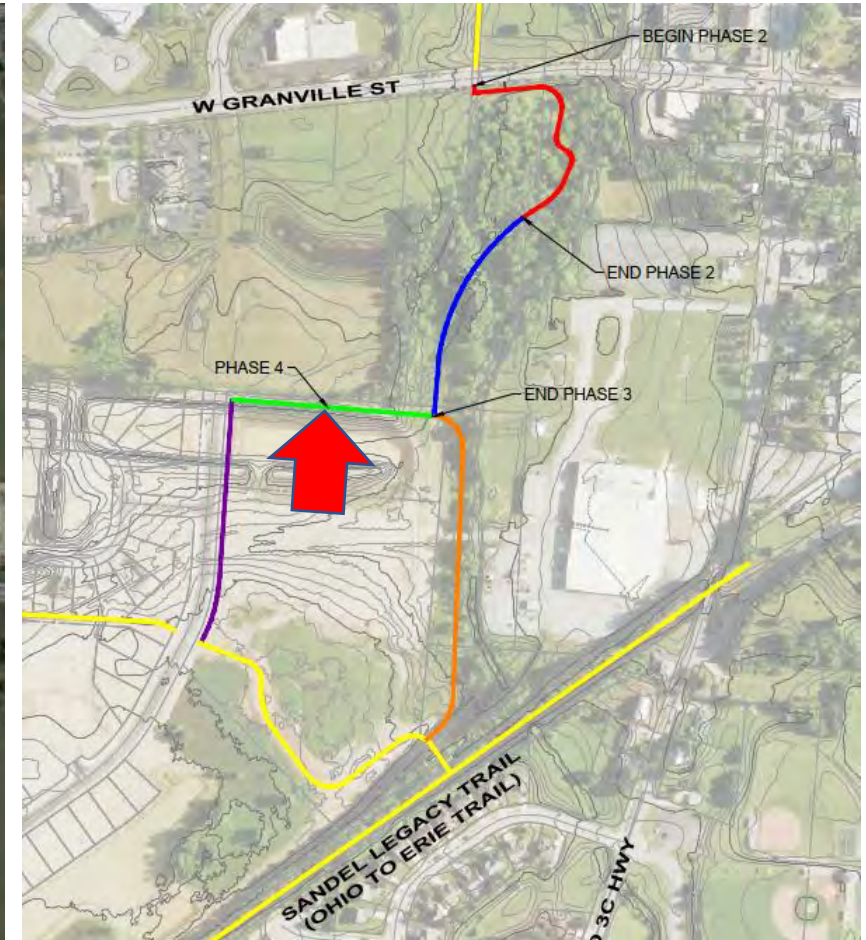


# COMMUNITY TRAIL IMPROVEMENT GRANT

Funding Trail Projects in Delaware County



Village of Sunbury,  
Fallen Heroes Trail, Ph 4





# Education & Outreach

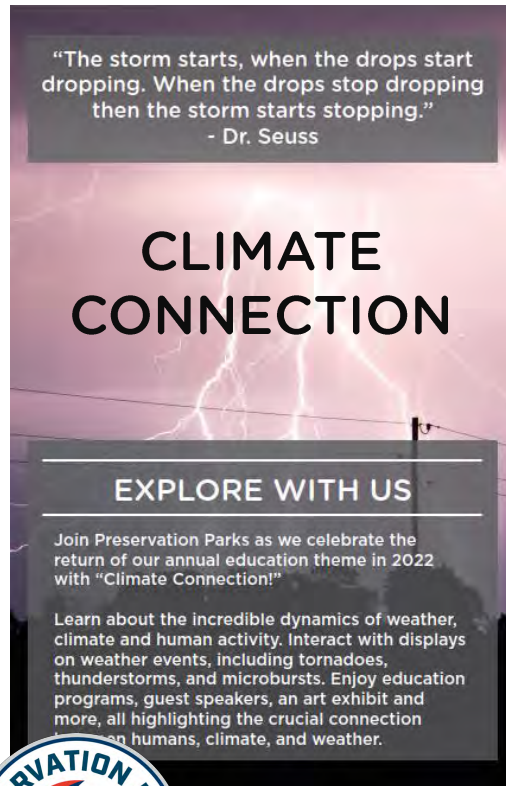




# EDUCATION & OUTREACH

## 2022 Theme – Climate Connection

## Summer Exhibits at Shale Hollow and Deer Haven





# EDUCATION & OUTREACH

For the Love of Birds Exhibit at Deer Haven

Climate and a Changing Landscape



Artists Julie Turrentine (glass) and Caroline Blizzard (photographer) will take you through an artistic vision of the National Audubon Society's climate report "Survival by Degrees: 385 Birds on the Brink"





# EDUCATION & OUTREACH

For the Love of Birds -Glass Art





# EDUCATION & OUTREACH

## For the Love of Birds – Photography

Three (3) 24x36 Canvas pieces depicting habitat for the climate display and 3-5 16x20 or 14x20 canvas photographs of local birds as an introduction wall to the exhibit itself.





# EDUCATION & OUTREACH

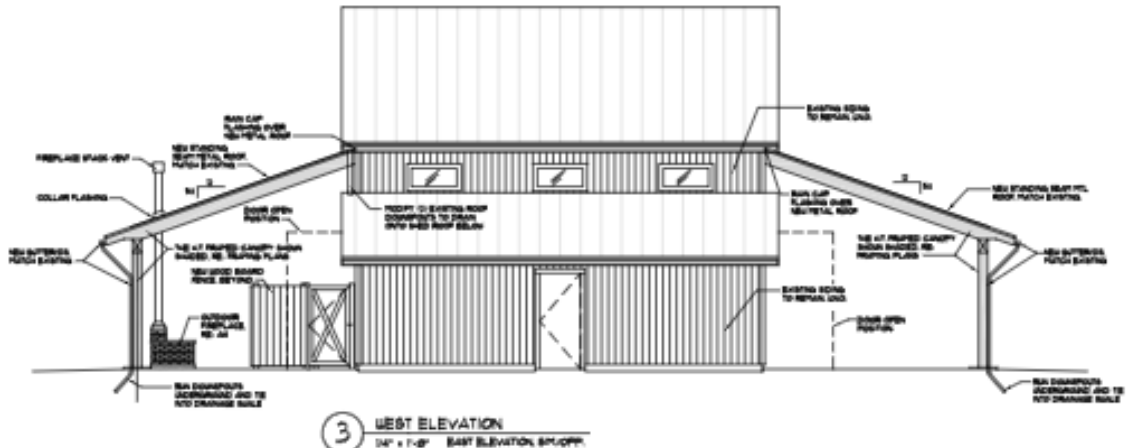
## Program Highlights

- Increase Self-guided Activities
- Familiar favorites and new additions





- Add hogs
- Construct smokehouse
- Complete granary overhangs



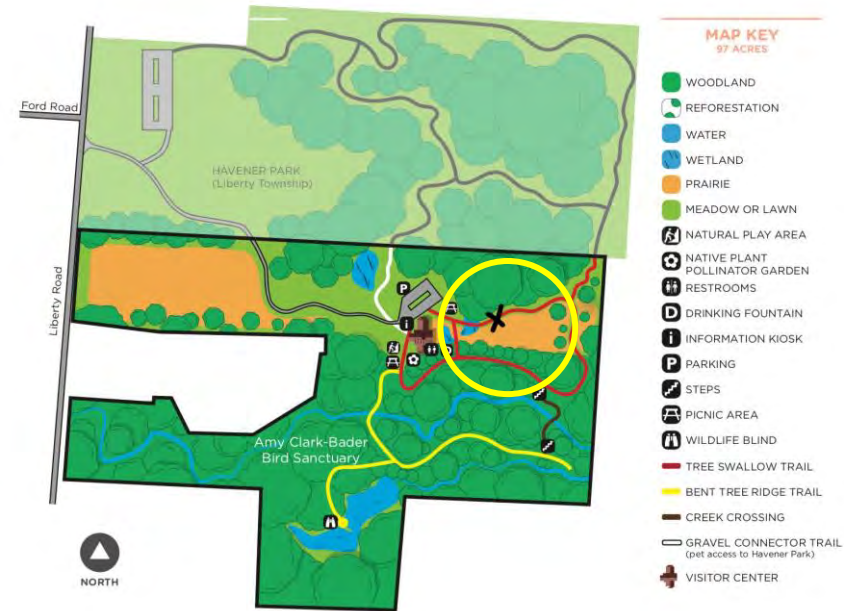


# Color Blind Viewer

- To be located at Deer Haven Park
- First one in the state
- Outfitted with innovative EnChroma<sup>®</sup> lenses, designed to alleviate red-green colorblindness



SeeCoast Manufacturing Co., Inc.  
744 Middle St.  
Fairhope, AL 36532



Check out video at [www.tnvacation.com/tn-fall-color](http://www.tnvacation.com/tn-fall-color)

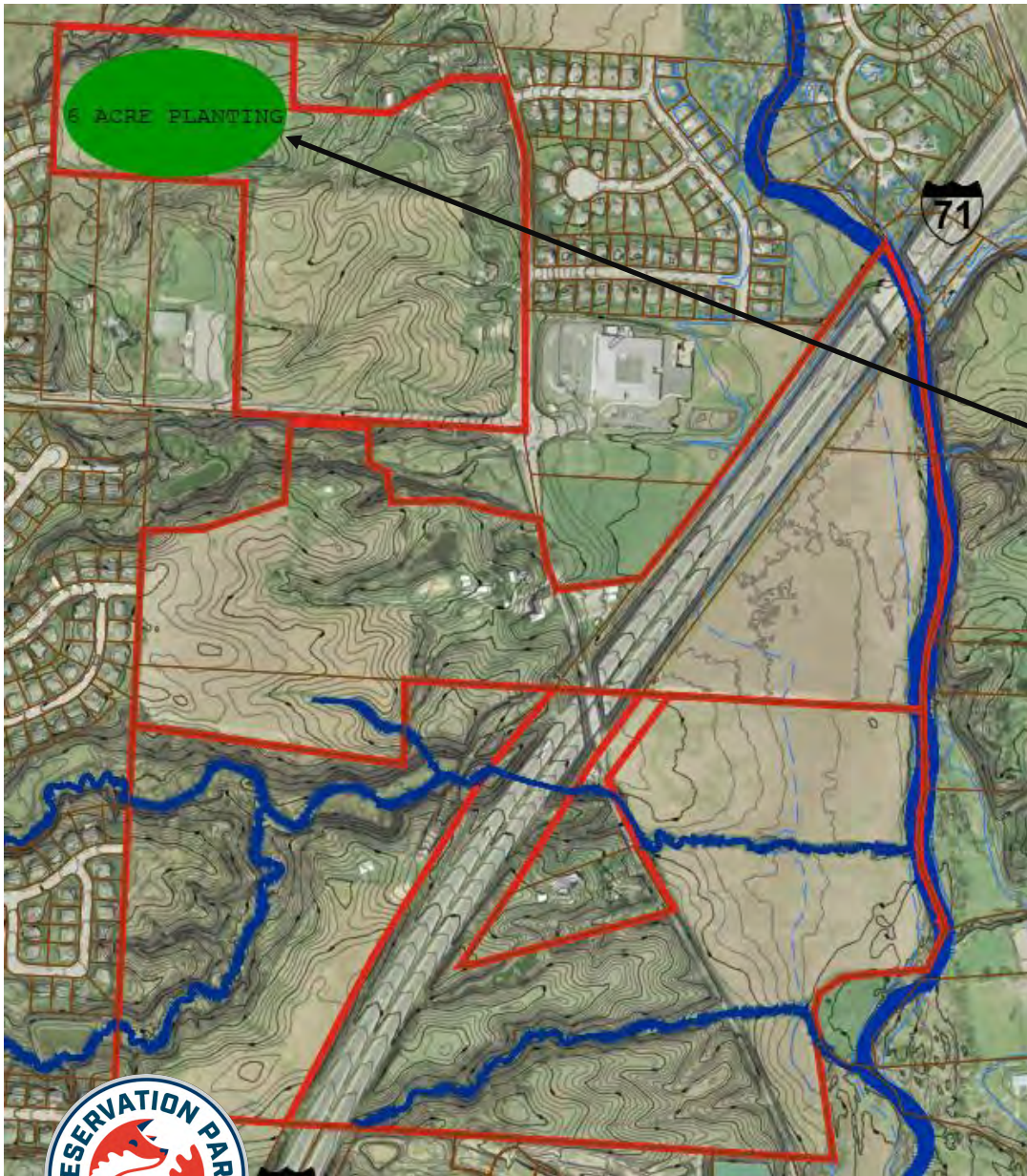




# Habitat Improvements







**McCammon Phase 6  
Tree Planting**





# Marketing





# Marketing

- Highlight projects in district with increased video and social media posts

- Expand staff contributions to social media content

- Upgrade and redesign website

- Rollout new brand standards guide to staff

- Introduce strategic marketing plan and begin working on goals set forth in plan

- Follow-up on phasing down brochures – redesign as needed, follow-up with trail app research and surveys





# The End!



[preservationparks.com](http://preservationparks.com)