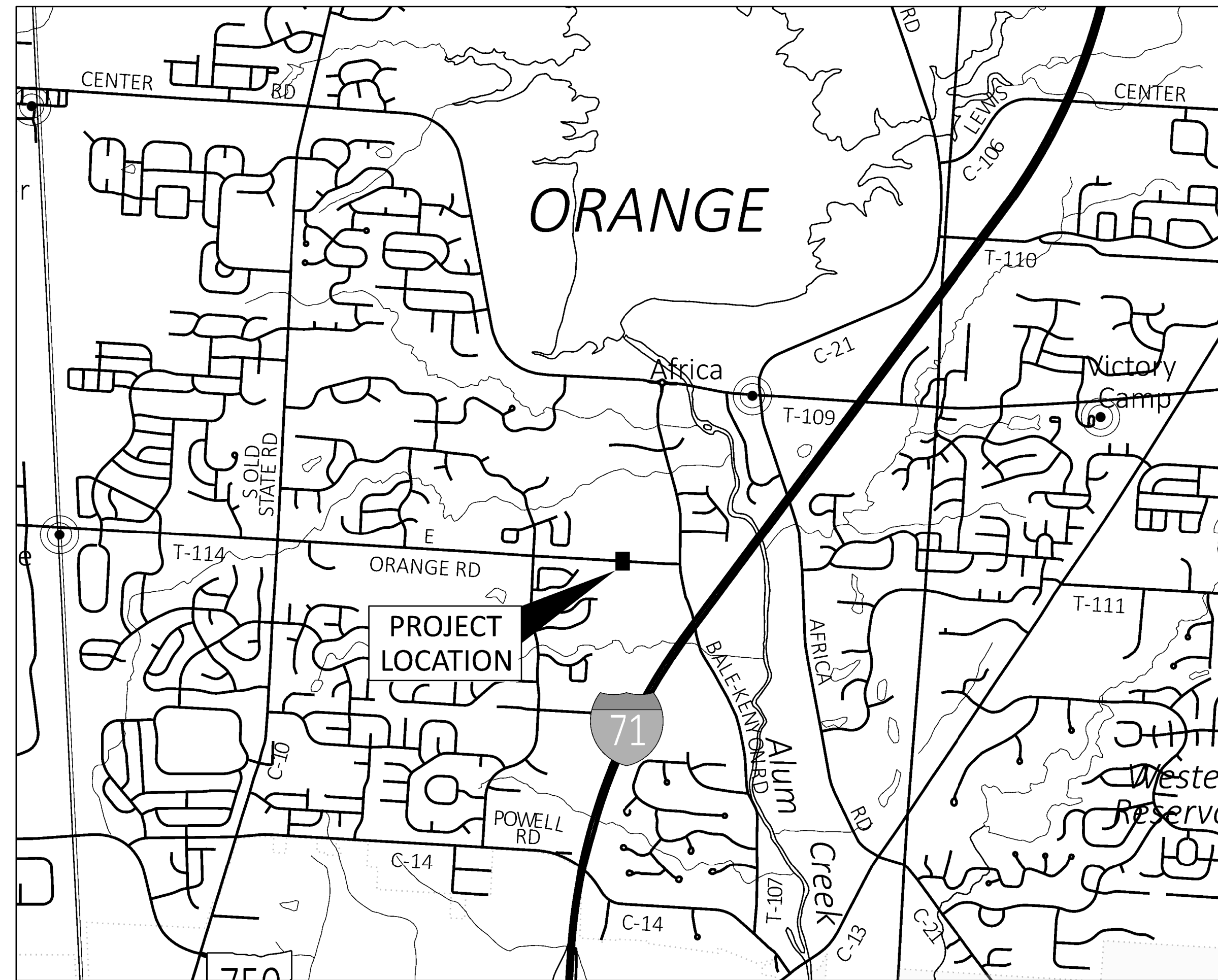


MCCAMMON CREEK PARK PARKING LOT

PRESERVATION PARKS OF DELAWARE COUNTY (PPDC)
DELAWARE COUNTY, OHIO

SHEET INDEX

T-000	TITLE SHEET
C-000	GENERAL NOTES
C-001	EXISTING SITE PLAN
C-101	SITE PLAN
C-102	GRADING PLAN
C-201	TRAIL PLAN
C-202	DRIVEWAY DETAILS
C-501	SITE DETAILS
C-502	SITE DETAILS
C-503	EROSION CONTROL DETAILS



VICINITY MAP



PROJECT DESCRIPTION

THIS PROJECT, LOCATED AT MCCAMMON PARK ALONG EAST ORANGE ROAD IN DELAWARE COUNTY, OHIO, CONSISTS OF THE CONSTRUCTION OF A DRIVE AND PARKING LOT THAT CONTAINS 29 SPACES INCLUDING 2 HANDICAP SPACES. THE PROJECT ALSO INCLUDES RELOCATING THE EXISTING TRAIL, GRADING FOR A FUTURE EXPANSION, AND A BIORETENTION CELL.

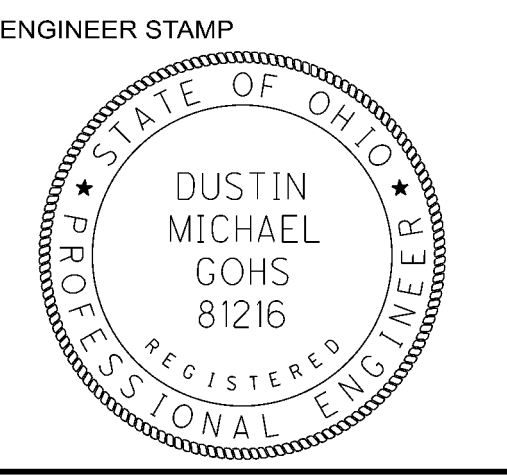
MCCAMMON CREEK PARK
PARKING LOT

PRESERVATION PARKS OF DELAWARE COUNTY (PPDC)
DELAWARE COUNTY, OHIO

NO.	REVISIONS	DATE

UNDERGROUND UTILITIES
Contact Two Working Days
Before You Dig

OHIO811, 8-1-1, or 1-800-362-2764
(Non-members must be called directly)



PROJECT NUMBER	PPDTR0006
DESIGNED BY	WCS
DRAWN BY	WCS
CHECKED BY	DMG
SUBMISSION	DATE
BID DOCUMENTS	04-23-24
SHEET TITLE	
TITLE SHEET	
SHEET NO.	REVISION NO.
T-000	

**CARPENTER
MARTY** transportation

10816 MILLINGTON COURT, SUITE 104
CINCINNATI, OHIO 45242
513.734.8542 • WWW.CMTRAN.COM

F:\06A\PPD\TR\0006.McCammon.Park.parking.lot\00006\400-Engineering\Roadway\Sheets\00006.McCammon.C-000.dgn.Sheet 4/23/2024 2:24:42 PM wshannon

GENERAL

- ALL WORK SHALL CONFORM TO THE LATEST VERSION OF THE 2023 OHIO DEPARTMENT OF TRANSPORTATION CONSTRUCTION AND MATERIAL SPECIFICATIONS.
- A COPY OF THE APPROVED PLAN MUST BE ON SITE WHENEVER CONSTRUCTION IS IN PROGRESS.
- ALL PERMITS REQUIRED FOR WORK ON THE PROJECT SHALL BE OBTAINED BY THE CONTACTOR PRIOR TO BEGINNING CONSTRUCTION.
- THE CONTRACTOR SHALL VERIFY FIELD CONDITIONS PRIOR TO CONSTRUCTION. THE CONTRACTOR SHALL VERIFY EXISTING ELEVATIONS AND DIMENSIONS WHERE PROPOSED WORK WILL MATCH EXISTING. DISCREPANCIES SHALL BE BROUGHT TO THE ATTENTION OF THE ENGINEER FOR RESOLUTION PRIOR TO CONSTRUCTION.
- THE CONTRACTOR SHALL TAKE CARE TO AVOID DAMAGE TO EXISTING PAVEMENT, TREES, VEGETATION, STRUCTURES, AND UTILITIES THAT ARE NOT INDICATED TO BE DEMOLISHED OR REMOVED. ANY DAMAGE TO EXISTING PAVEMENT, TREES, VEGETATION, STRUCTURES, OR UTILITIES NOT INDICATED TO BE DEMOLISHED OR REMOVED SHALL BE REPAIRED AT THE CONTRACTOR'S EXPENSE.
- UTILITIES HAVE BEEN SHOWN BASED ON AVAILABLE SURVEY INFORMATION. IT IS THE CONTRACTOR'S RESPONSIBILITY TO VERIFY THEIR EXACT LOCATION AND TO AVOID DAMAGE TO THEM. THE CONTRACTOR SHALL CONTACT OHIO 811 TO REQUEST UNDERGROUND UTILITY MARKINGS AT LEAST 48 HOURS PRIOR TO BEGINNING CONSTRUCTION. THE CONTRACTOR SHALL ALSO CONTACT AND REQUEST UTILITY MARKINGS FROM BURIED UTILITY OWNERS WITH UTILITIES ON THE PROJECT SITE THAT ARE NOT PARTICIPANTS OF OHIO 811.
- THE CONTRACTOR SHALL REMOVE AND DISPOSE OF ALL DEBRIS GENERATED DURING THE PROJECT OFF SITE AT A PROPERLY PERMITTED DISPOSAL FACILITY, UNLESS OTHERWISE NOTED.
- THE CONSTRUCTION LIMITS SHOWN ON THESE PLANS ARE FOR PHYSICAL CONSTRUCTION ONLY. PROVIDE THE INSTALLATION AND OPERATION OF ALL CLOSURE SIGNAGE REQUIRED BY THESE PLANS WHETHER INSIDE OR OUTSIDE THE CONSTRUCTION LIMITS.
- THE CONTRACTOR SHALL FURNISH AND APPLY WATER FOR DUST CONTROL.

PARK ACCESS

VEHICULAR ACCESS TO THE PARK SHALL BE PROHIBITED FOR THE DURATION OF THE PROJECT.

THE CONTRACTOR SHALL MAINTAIN PEDESTRIAN ACCESS ACROSS THE PROPOSED DRIVEWAY AT ALL TIMES.

CLEARING AND GRUBBING

REMOVE ALL TREES AND STUMPS SPECIFICALLY MARKED FOR REMOVAL WITHIN THE CONSTRUCTION LIMITS UNDER THE LUMP SUM BID FOR ITEM 201, CLEARING AND GRUBBING.

THE CONTRACTOR SHALL PROVIDE A BID ALTERNATE FOR THE TREE REMOVALS TO INCLUDE TREE REMOVAL AND REPLANTING. THE CONTRACTOR SHALL REMOVE AND REPLANT THE TREES AT THE DISCRETION OF THE PRESERVATIONS PARKS OF DELAWARE COUNTY AND SHALL REPLANT THE TREES AS PER ODOT ITEM 661. IF A TREE CANNOT BE REPLANTED IMMEDIATELY UPON REMOVAL, THE CONTRACTOR SHALL ENSURE THAT THE TREE IS STORED AND MAINTAINED PROPERLY UNTIL IT CAN BE REPLANTED. SEE SHEET C-002 FOR MORE INFORMATION.

SUBGRADE COMPACTION

THE CONTRACTOR SHALL CONSTRUCT THE SUBGRADE AS FOLLOWS:

- SHAPE THE SUBGRADE TO WITHIN 0.2 FEET OF THE PLAN SUBGRADE ELEVATION
- COMPACT THE SUBGRADE ACCORDING TO ODOT SPECIFICATION 204.03.
- FINE GRADE THE SUBGRADE TO THE SPECIFIED SUBGRADE.

SEEDING AND MULCHING

SEEDING AND MULCHING SHALL BE APPLIED TO ALL AREAS OF EXPOSED SOIL WITHIN THE CONSTRUCTION LIMITS.

ITEM 690 - SPECIAL - PAVEMENT CRACK AND JOINT REINFORCING FABRIC

THIS ITEMS SHALL CONSIST OF THE INSTALLATION OF PROPEX PETROTAC SELF-ADHESIVE PAVING STRIP MEMBRANE GEOTEXTILE. PETROTAC SHALL BE INSTALLED AS SHOWN ON SHEET C-101 ALONG THE LOCALIZED STORM WATER DRAINAGE PATH. PETROTAC SHALL BE PLACED ON TOP OF ITEM 301 - ASPHALT CONCRETE BASE PRIOR TO THE INTERMEDIATE AND SURFACE COURSES BEING PLACED. THE CONTRACTOR SHALL USE 18" x 108' ROLLS OF PETROTAC AND INSTALL ACCORDING TO THE MANUFACTURER'S INSTRUCTIONS.

ALL WORK, LABOR, MATERIAL, EQUIPMENT AND INCIDENTALS NECESSARY TO COMPLETE THIS WORK SHALL BE INCLUDED IN THE UNIT PRICE BID PER SQUARE YARD FOR ITEM 690, SPECIAL - PAVEMENT CRACK AND JOINT REINFORCING FABRIC.

THE FOLLOWING QUANTITIES HAVE BEEN CARRIED TO THE GENERAL SUMMARY:

ITEM 690 - SPECIAL - PAVEMENT CRACK AND JOINT REINFORCING FABRIC - 24 SY

EROSION CONTROL

REQUIREMENTS FOR EROSION CONTROLS

- BMPS, WHICH PRESERVE THE EXISTING NATURAL SITE CONDITION AS MUCH AS FEASIBLE ARE REQUIRED TO BE UTILIZED IN THE SWP3, SUCH AS PHASED CONSTRUCTION TO MINIMIZE LAND DISTURBED AT ANY ONE TIME, PRESERVING RIPARIAN AREAS AND LEAVING EXISTING VEGETATION IN PLACE FOR AS LONG AS POSSIBLE.
- STABILIZATION OF DISTURBED AREAS MUST BE INITIATED WITHIN 7 DAYS OF REACHING FINAL GRADE.
- AREAS WITHIN 50 FEET OF A STREAM (INCLUDING INTERMITTENT STREAMS) MUST BE STABILIZED WITHIN 2 DAYS OF THE MOST RECENT DISTURBANCE.
- TEMPORARY STABILIZATION OF DISTURBED AREAS THAT WILL BE REWORKED, BUT NOT FOR 21 DAYS OR MORE FROM THE DATE THEY WERE LAST DISTURBED, MUST BE INITIATED WITHIN 7 DAYS OF LAST DISTURBANCE.
- DISTURBED AREAS INTENDED TO BE LEFT IDLE OVER WINTER MUST BE STABILIZED PRIOR TO THE ONSET OF WINTER WEATHER, I.E., SUSTAINED SNOW COVER OR FROZEN GROUND CONDITIONS.
- SPECIAL MEASURES MUST BE TAKEN AS NECESSARY TO STABILIZE DRAINAGE CHANNELS AND STORMWATER OUTFALLS.
- RUNOFF MUST BE DIVERTED AWAY FROM DISTURBED AREAS AND STEEP SLOPES WHEREVER PRACTICABLE.

REQUIREMENTS FOR SEDIMENT CONTROLS

- PLAN SEDIMENT CONTROLS FOR ANY AREA THAT WILL REMAIN DISTURBED FOR 14 DAYS OR LONGER.
- SEDIMENT CONTROLS MUST POND RUNOFF IN ORDER TO BE CONSIDERED FUNCTIONAL.
- SEDIMENT PONDS (INCLUDING TEMPORARILY MODIFIED PERMANENT PONDS) AND PERIMETER SEDIMENT BARRIERS MUST BE INSTALLED AS THE FIRST STEP OF GRADING AND WITHIN 7 DAYS FROM THE START OF GRUBBING AND REMAIN FUNCTIONAL UNTIL ALL UPSLOPE DEVELOPMENT AREAS ARE RESTABILIZED.
- NO STRUCTURAL SEDIMENT CONTROLS MAY BE LOCATED IN A STREAM. AS SUCH, PERMANENT STORM WATER BASINS LOCATED "IN-LINE" WITH A STREAM MAY NOT BE UTILIZED AS A SEDIMENT POND.
- SEDIMENT BARRIERS MAY NOT BE PLACED ACROSS STREAM CHANNELS.
- SEDIMENT BARRIERS, SUCH AS SILT FENCE OR DIVERSIONS, MUST BE IMPLEMENTED TO PREVENT SILT FROM ENTERING WATER RESOURCES THAT RUN THROUGH THE PROPERTY.
- SEDIMENT BARRIERS MUST BE IMPLEMENTED TO PROTECT ADJACENT PROPERTIES.
- SILT FENCE IS ONLY ALLOWED TO BE USED TO CONTROL SHEET FLOW RUNOFF FROM LIMITED DRAINAGE AREAS. THE PERMISSIBLE DRAINAGE AREA PER 100 LINEAR FEET OF SILT FENCE IS DEPENDENT ON THE SLOPE BUT IS NO MORE THAN 0.5 ACRE. SILT FENCE CAN NOT BE USED TO CONTROL DRAINAGE AREAS WITH A SLOPE OF GREATER THAN 50%.
- NO MORE THAN 10 ACRES MAY DRAIN TO A DIVERSION.
- INLET PROTECTION MUST BE IMPLEMENTED TO PREVENT SEDIMENT FROM ENTERING THE STORM DRAIN SYSTEM, UNLESS THAT SYSTEM DISCHARGES TO A SEDIMENT POND.

REQUIREMENTS FOR CONSTRUCTION WASTE

- NO SOLID OR LIQUID WASTE, INCLUDING BUILDING MATERIALS OR THEIR PACKAGING, SHALL BE DISCHARGED IN STORMWATER RUNOFF.
- CONCRETE TRUCKS ARE NOT PERMITTED TO WASH OUT DIRECTLY INTO STORM SEWERS, STREAMS OR DRAINAGE CHANNELS.
- OFF-SITE TRACKING OF SEDIMENTS BY CONSTRUCTION VEHICLES MUST BE MINIMIZED.
- WASTE DISPOSAL VIA OPEN BURNING IS PROHIBITED WHERE NOT PERMITTED UNDER THE STATE OF OHIO OPENING BURNING LAWS.
- CONTAMINATED SOILS OR SOILS WHERE CONSTRUCTION SITE CHEMICALS HAVE BEEN SPILLED MUST BE REMOVED FROM THE SITE AND DISPOSED OF IN ACCORDANCE WITH FEDERAL, STATE AND LOCAL REGULATIONS.
- STORMWATER THAT COMES IN CONTACT WITH CONTAMINATED SOILS, OR SOLID & INDUSTRIAL WASTE MUST BE COLLECTED AND DISPOSED OF AS A WASTEWATER.
- FUEL TANKS AND DRUMS OR OTHER CONTAINERS HOLDING CONSTRUCTION SITE CHEMICALS MUST BE STORED WITHIN A DIKED AREA.
- SEDIMENT-LADEN TRENCH OR GROUNDWATER MUST PASS THROUGH A SEDIMENT-SETTLING POND, OR BE DEWATERED IN PLACE USING A SUMP PIT, FILTER BAG OR OTHER COMPARABLE METHOD, PRIOR TO BEING DISCHARGED FROM THE SITE.
- TRENCH AND GROUND WATER FREE FROM SEDIMENT OR OTHER POLLUTANTS MAY BE DISCHARGED WITHOUT TREATMENT, PROVIDED THIS WATER DOES NOT BECOME POLLUTANT-LADEN BY TRAVERSING OVER DISTURBED SOILS OR OTHER POLLUTANT SOURCES.

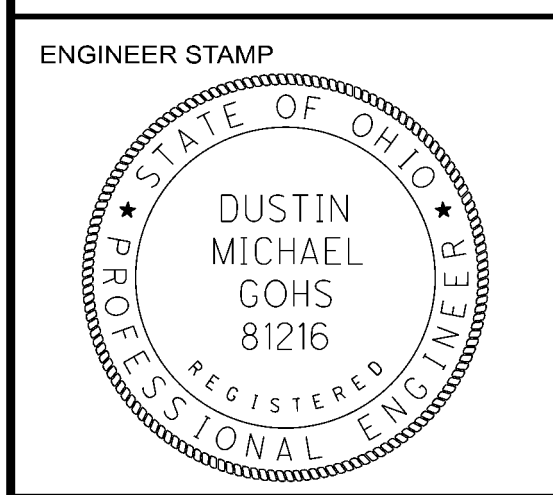
MAINTENANCE REQUIREMENTS

- ALL BMPS MUST BE MAINTAINED IN A FUNCTIONAL CONDITION UNTIL ALL UPSLOPE AREAS THEY CONTROL ARE PERMANENTLY RESTABILIZED.
- MAINTENANCE OR REPAIR OF BMPS MUST BE COMPLETED WITHIN 3 DAYS OF THE DATE OF THE INSPECTION THAT REVEALED THEY WERE DEFICIENT. FOR SEDIMENT PONDS, REPAIR OR MAINTENANCE IS REQUIRED WITHIN 10 DAYS OF THE DATE OF THE INSPECTION.

DATE									
REVISIONS									
NO.									

**MCCAMMON CREEK PARK
PARKING LOT**

PRESERVATION PARKS OF DELAWARE COUNTY (PPDC)
DELAWARE COUNTY, OHIO

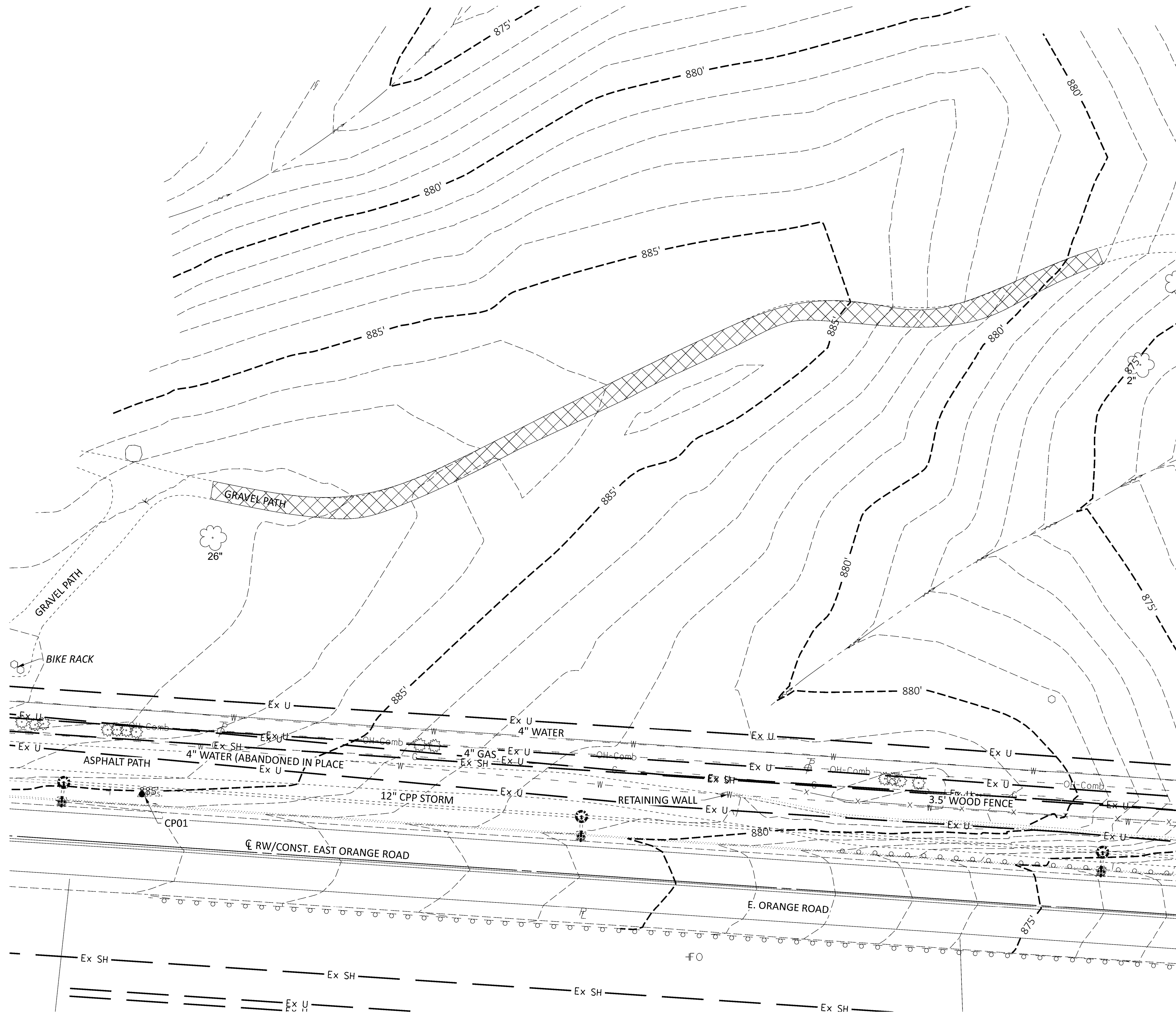


PROJECT NUMBER	PPDTR0006
DESIGNED BY	WCS
DRAWN BY	WCS
CHECKED BY	DMG
SUBMISSION	DATE
BID DOCUMENTS	04-23-24

SHEET TITLE
GENERAL NOTES

SHEET NO. C-000	REVISION NO.
---------------------------	--------------

F:\06A\PPD\TR\0006.McCammon.Park.parking.lot\0006\400-Engineering\Roadway\Sheets\0006.McCammon.C-001.dgn Sheet 4/23/2024 2:36:47 PM wshannon



SURVEYING PARAMETERS

USE THE FOLLOWING PROJECT CONTROL, VERTICAL POSITIONING, AND HORIZONTAL POSITIONING PARAMETERS FOR ALL SURVEYING:

PROJECT CONTROL

POSITIONING METHOD: ODOT VRS

VERTICAL POSITIONING

ORTHOMETRIC HEIGHT DATUM: NAVD 88
 GEOID: GEOID12A

HORIZONTAL POSITIONING

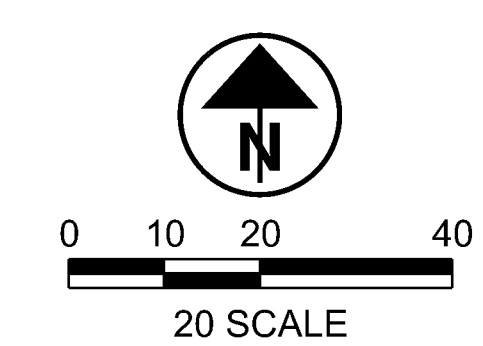
REFERENCE FRAME: NAD 83 (2011)
 ELLIPSOID: GRS80
 MAP PROJECTION: LAMBERT CONFORMAL CONIC
 COORDINATE SYSTEM: OHIO STATE PLANE, NORTH OHIO
 COMBINED SCALE FACTOR: 1.00000000
 ORIGIN OF COORDINATE SYSTEM: 0,0

UNITS ARE IN U.S. SURVEY FEET.

PROJECT CONTROL				
POINT NUMBER	NORTHING	EASTING	ELEVATION	DESCRIPTION
CP01	184786.066'	1838254.016'	884.814'	IRON PIN SET
CP02	184765.075'	1838714.079'	870.224'	IRON PIN SET

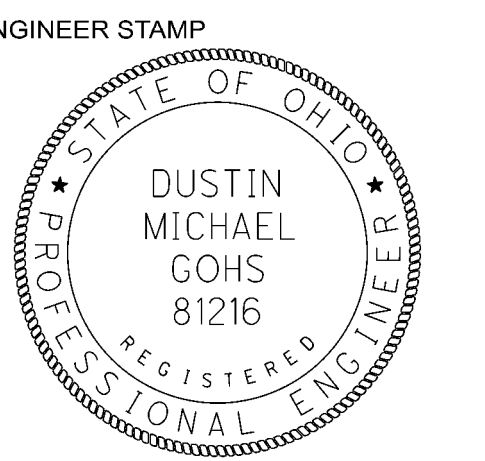
LEGEND

LIMITS OF REMOVAL FOR EXISTING GRAVEL TRAIL



**MCCAMMON CREEK PARK
 PARKING LOT**
 PRESERVATION PARKS OF DELAWARE COUNTY (PPDC)
 DELAWARE COUNTY, OHIO

DATE	REVISIONS	NO.

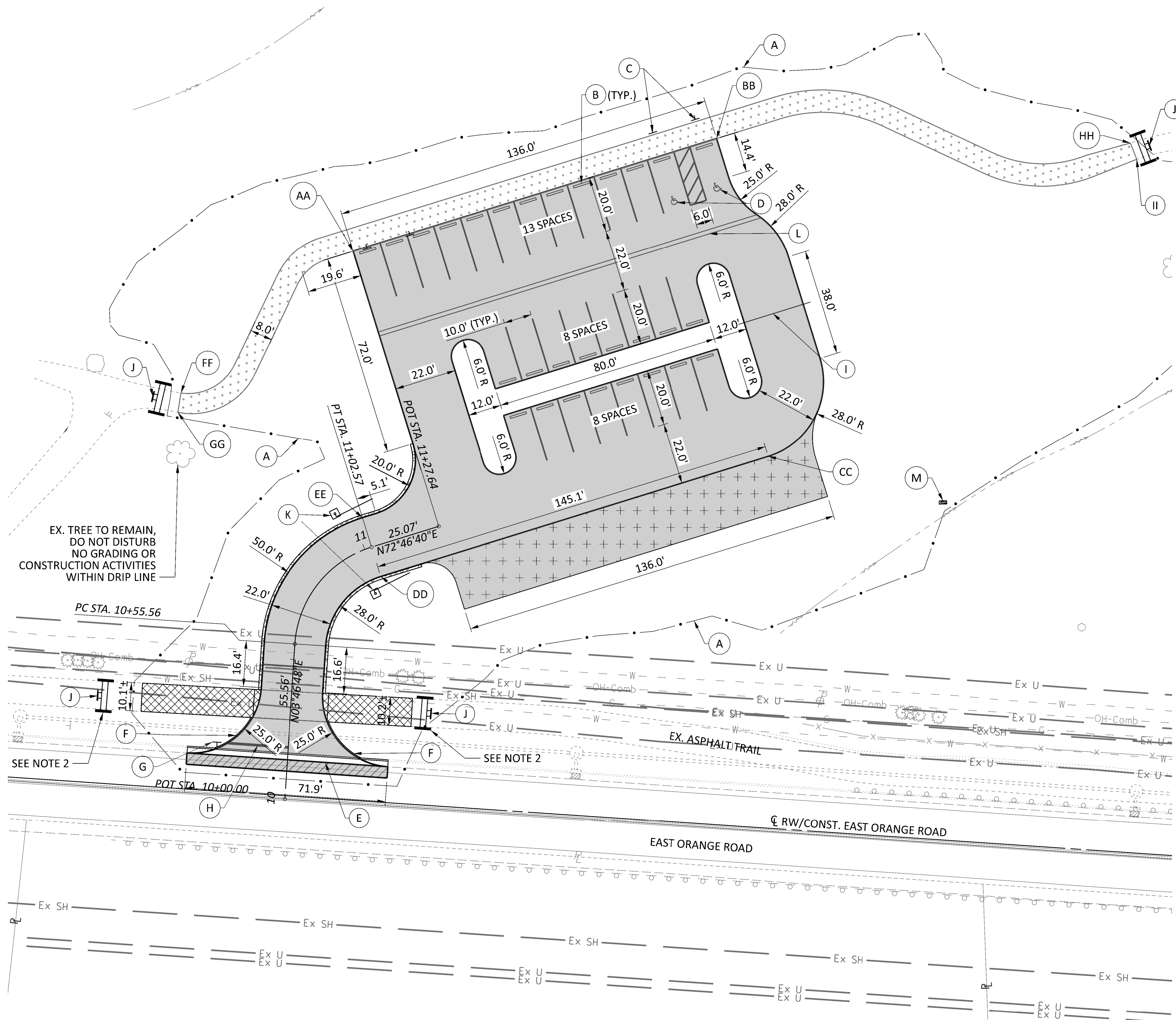


PROJECT NUMBER	PPDTR0006
DESIGNED BY	DMG
DRAWN BY	DMG
CHECKED BY	BAA
SUBMISSION	DATE
BID DOCUMENTS	04-23-24

SHEET TITLE
EXISTING SITE PLAN

SHEET NO.	REVISION NO.
C-001	

F:\06A\PPD\TR\0006.McCammon.Park.parking.lot\0006\400-Engineering\Roadway\Sheets\0006.McCammon.C-101.dgn Sheet 4/23/2024 2:35:18 PM wshannon



LEGEND

- FULL-DEPTH ASPHALT PAVEMENT (PARKING LOT AND DRIVEWAY), SEE DETAIL 01/C-501
- FULL-DEPTH ASPHALT PAVEMENT (EAST ORANGE ROAD), SEE DETAIL 01/C-501
- FUTURE PARKING LOT EXPANSION, TO BE FINE GRADED AS SHOWN ON C-102
- ASPHALT TRAIL REPLACEMENT, SEE DETAIL 01/C-501
- GRAVEL TRAIL, SEE DETAIL 01/C-501 (SEE SHEET C-201 FOR TRAIL DETAILS)
- AGGREGATE SHOULDER, SEE DETAIL 05/C-501

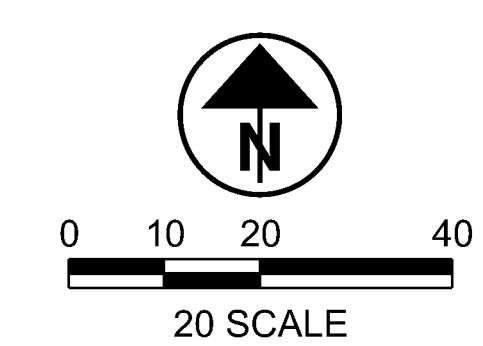
PLAN CALLOUTS

- A CONSTRUCTION LIMITS
- B PARKING BLOCK, SEE DETAIL 03/C-501
- C ADA PARKING SIGN, SEE DETAIL 02/C-501
- D ADA PAVEMENT MARKING SYMBOL, SEE DETAIL 04/C-501
- E ODOT ITEM 609 - COMBINATION CURB AND GUTTER, TYPE 2
- F ODOT ITEM 609 - CURB, TYPE 6
- G ODOT ITEM 630 - 30x30 STOP SIGN WITH GROUND MOUNTED SUPPORT, NO. 3 POST
- H ODOT ITEM 644 - STOP LINE
- I ODOT ITEM 625 - 30' CONDUIT, 1 - 1/2", 36" DEEP (FOR FUTURE PARKING LOT LIGHTING)
- J TYPE III BARRICADE WITH TRAIL CLOSED SIGN, SEE DETAIL 07/C-501
- K PARK GATE, SEE DETAIL 08/C-502
- L ODOT ITEM 690 - SPECIAL - PAVEMENT CRACK AND JOINT REINFORCING FABRIC
- M ODOT ITEM 611 - PRECAST REINFORCED CONCRETE OUTLET

NOTES

1. THE CONTRACTOR SHALL ENSURE THAT THE GRASS SHOULDERS ADJACENT TO THE PARKING LOT SHALL HAVE A MAXIMUM SLOPE OF 3 (H):1 (V).
2. THE CONTRACTOR SHALL MAINTAIN PEDESTRIAN ACCESS ALONG THE EAST ORANGE ROAD TRAIL AT ALL TIMES, EXCEPT WHEN WORK IS BEING PERFORMED ON THE DRIVEWAY IN THE VICINITY OF THE TRAIL CROSSING. THE CONTRACTOR SHALL HAVE THE BARRICADES IN PLACE WHEN ADJACENT DRIVEWAY WORK IS BEING PERFORMED. AT ALL OTHER TIMES DURING CONSTRUCTION, THE BARRICADES SHALL BE REMOVED AND THE TRAIL OPEN TO PEDESTRIAN TRAFFIC.

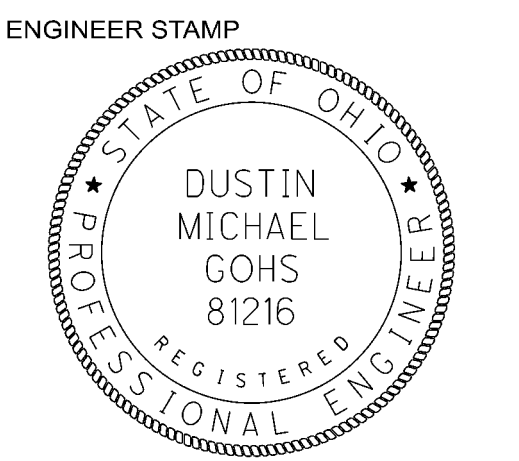
POINT	X-COORDINATE	Y-COORDINATE
AA	1838343.05	184957.05
BB	1838472.95	184997.31
CC	1838491.42	184883.69
DD	1838352.85	184840.73
EE	1838346.34	184861.75
FF	1838281.40	184906.33
GG	1838280.37	184899.48
HH	1838620.86	184995.72
II	1838623.17	184989.93



DATE	REVISIONS	NO.	DESCRIPTION

MCCAMMON CREEK PARK PARKING LOT

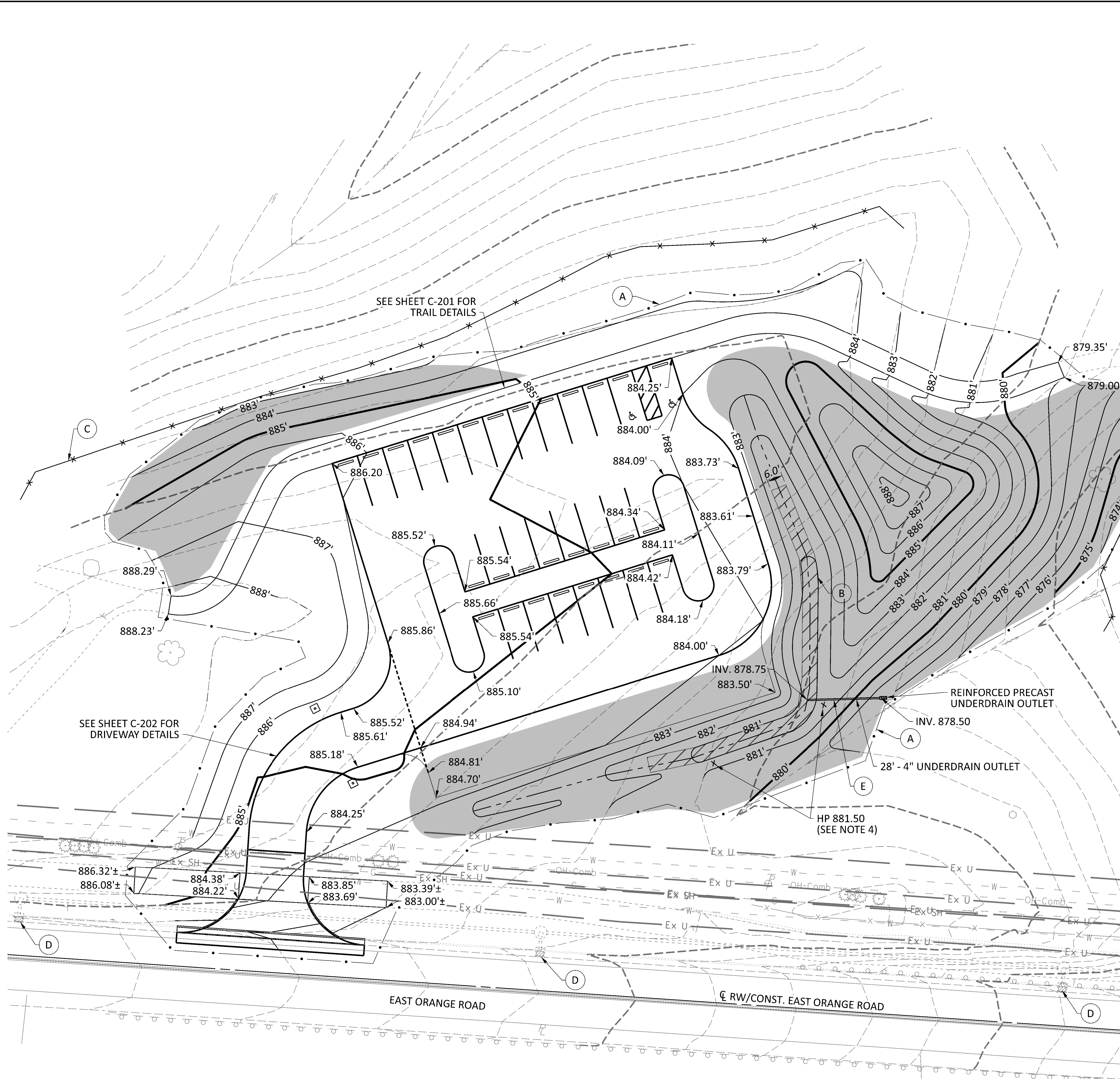
PRESERVATION PARKS OF DELAWARE COUNTY (PPDC)
DELAWARE COUNTY, OHIO





PROJECT NUMBER	PPDTR006
DESIGNED BY	WCS
DRAWN BY	WCS
CHECKED BY	DMG
SUBMISSION	DATE
BID DOCUMENTS	04-23-24

SHEET TITLE	
SITE PLAN	
SHEET NO.	REVISION NO.
C-101	

F:\06A\PPD\TR\0006-McCammon Park parking lot\0006\400-Engineering\Roadway\Sheets\0006-McCammon-C-102.dgn Sheet 4/23/2024 2:34:06 PM wshannon



LEGEND

-  BIORETENTION CELL, SEE DETAIL 06/C-501
-  NATIVE SEED MIX, SEE NOTE 3

PLAN CALLOUTS

- A CONSTRUCTION LIMITS
- B 152' BIORETENTION CELL, SEE DETAIL 06/C-501
- C STAW WATTLES, SEE DETAIL 03/C-503
- D INLET PROTECTION
- E ODOT ITEM 611 - 4" CONDUIT, TYPE F (TO BE CONNECTED TO THE BMP UNDERDRAIN)

NOTES

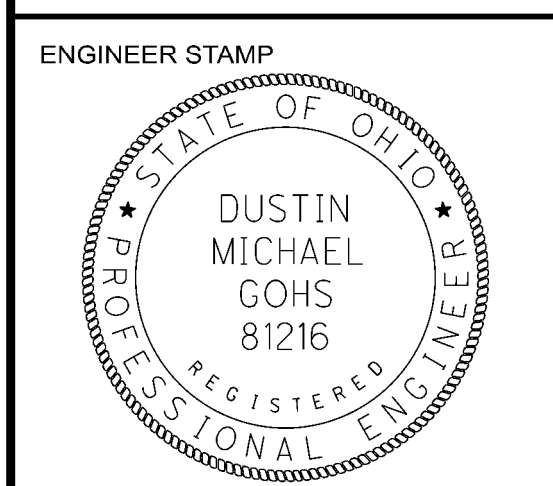
1. DRAINAGE INFORMATION
 TOTAL DRAINAGE AREA TO BMP 0.70 AC
 NEW IMPERVIOUS AREA 0.45 AC
2. PAVEMENT ELEVATIONS SHOW HERE ARE TO TOP OF FINAL ASPHALT PAVEMENT GRADE. SEE PAVEMENT DETAILS 01/C-501 FOR AGGREGATE BASE AND ASPHALT THICKNESSES.
3. THE CONTRACTOR SHALL USE THE NATIVE SEED MIX IN THE AREAS DESIGNATED. THE NATIVE SEED MIX SHALL BE AS FOLLOWS:
 OHIO PRAIRIE NURSERY
 MWE05 WOODLAND EDGE MIX (OR APPROVED EQUAL)
 WOODLAND EDGE SEED MIX | OPN SEED
 WITH ANNUAL RYE COVER CROP (20 LBS/AC.)
4. THE CONTRACTOR SHALL PROVIDE A HIGH POINT BERM AT ELEVATION 881.50 BETWEEN THE TWO HIGH POINTS SHOWN.

EARTH DISTURBED AREAS

PROJECT EARTH DISTURBED AREA: 1.49 ACRES
 ESTIMATED CONTRACTOR EARTH DISTURBED AREA: 0.00 ACRES
 NOTICE OF INTENT EARTH DISTURBED AREA: 1.49 ACRES

NO.	REVISIONS	DATE

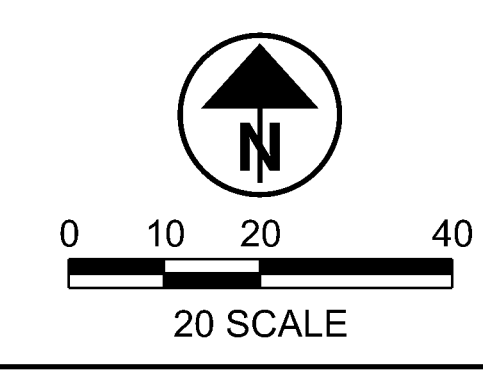
**MCCAMMON CREEK PARK
PARKING LOT**
PRESERVATION PARKS OF DELAWARE COUNTY (PPDC)
DELAWARE COUNTY, OHIO



PROJECT NUMBER	PPDTR006
DESIGNED BY	WCS
DRAWN BY	WCS
CHECKED BY	DMG
SUBMISSION	DATE
BID DOCUMENTS	04-23-24

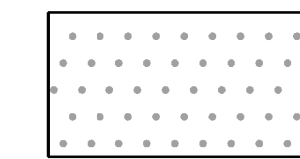
SHEET TITLE
GRADING PLAN

SHEET NO.	REVISION NO.
C-102	



CURVE #1 DATA	CURVE #2 DATA	CURVE #3 DATA	CURVE #4 DATA
P.I. = STA. 0+19.48	P.I. = STA. 0+76.00	P.I. = STA. 2+72.04	P.I. = STA. 3+51.28
$\Delta = 75^\circ51'10''$ LT	$\Delta = 47^\circ11'46''$ RT	$\Delta = 42^\circ18'07''$ RT	$\Delta = 46^\circ49'10''$ LT
Dc = 229°10'59"	Dc = 337°02'02"	Dc = 114°35'30"	Dc = 114°35'30"
R = 25.00'	R = 17.00'	R = 50.00'	R = 50.00'
T = 19.48'	T = 7.43'	T = 19.34'	T = 21.65'
L = 33.10'	L = 14.00'	L = 36.92'	L = 40.86'
E = 6.69'	E = 1.55'	E = 3.61'	E = 4.48'

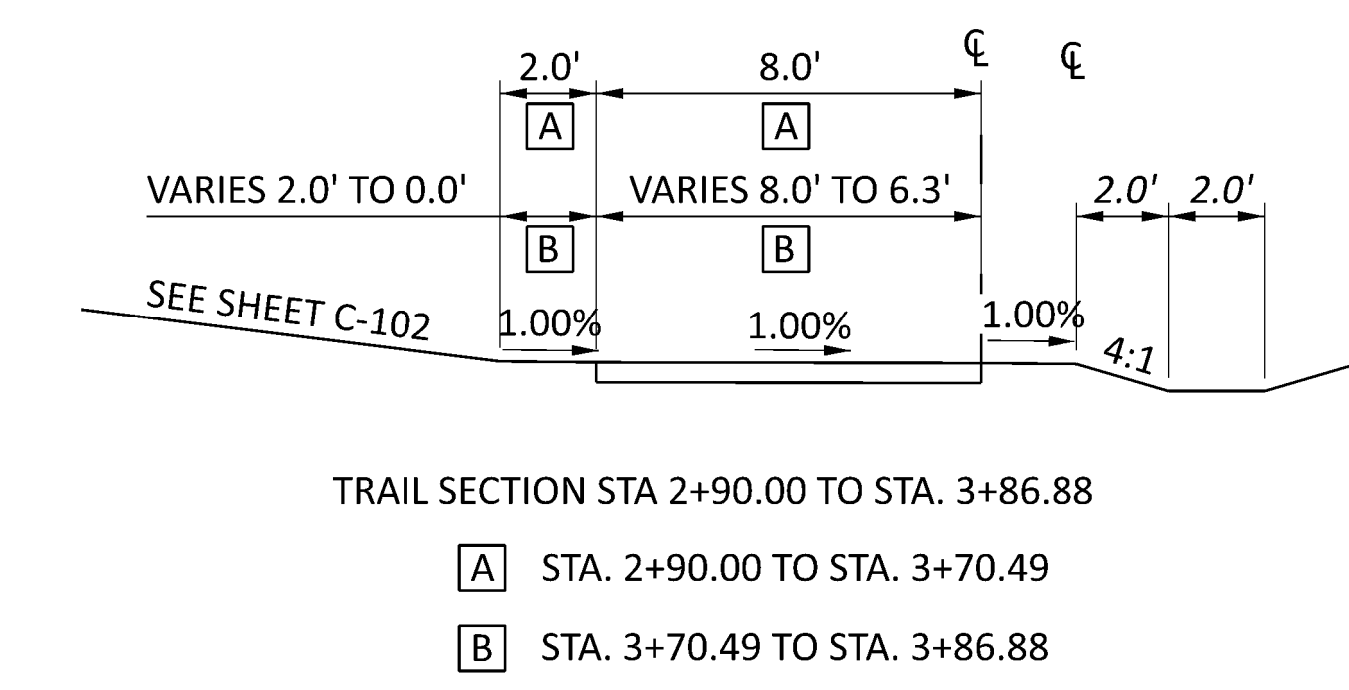
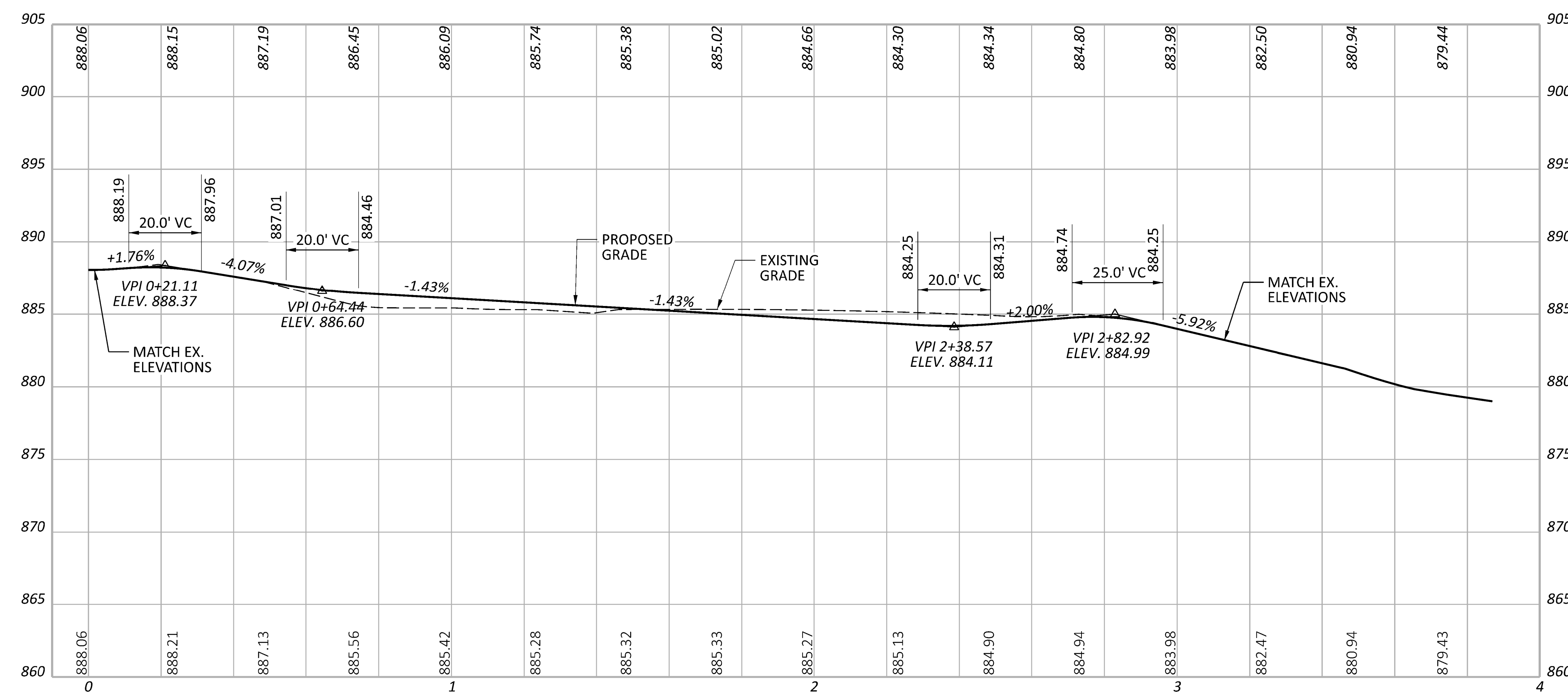
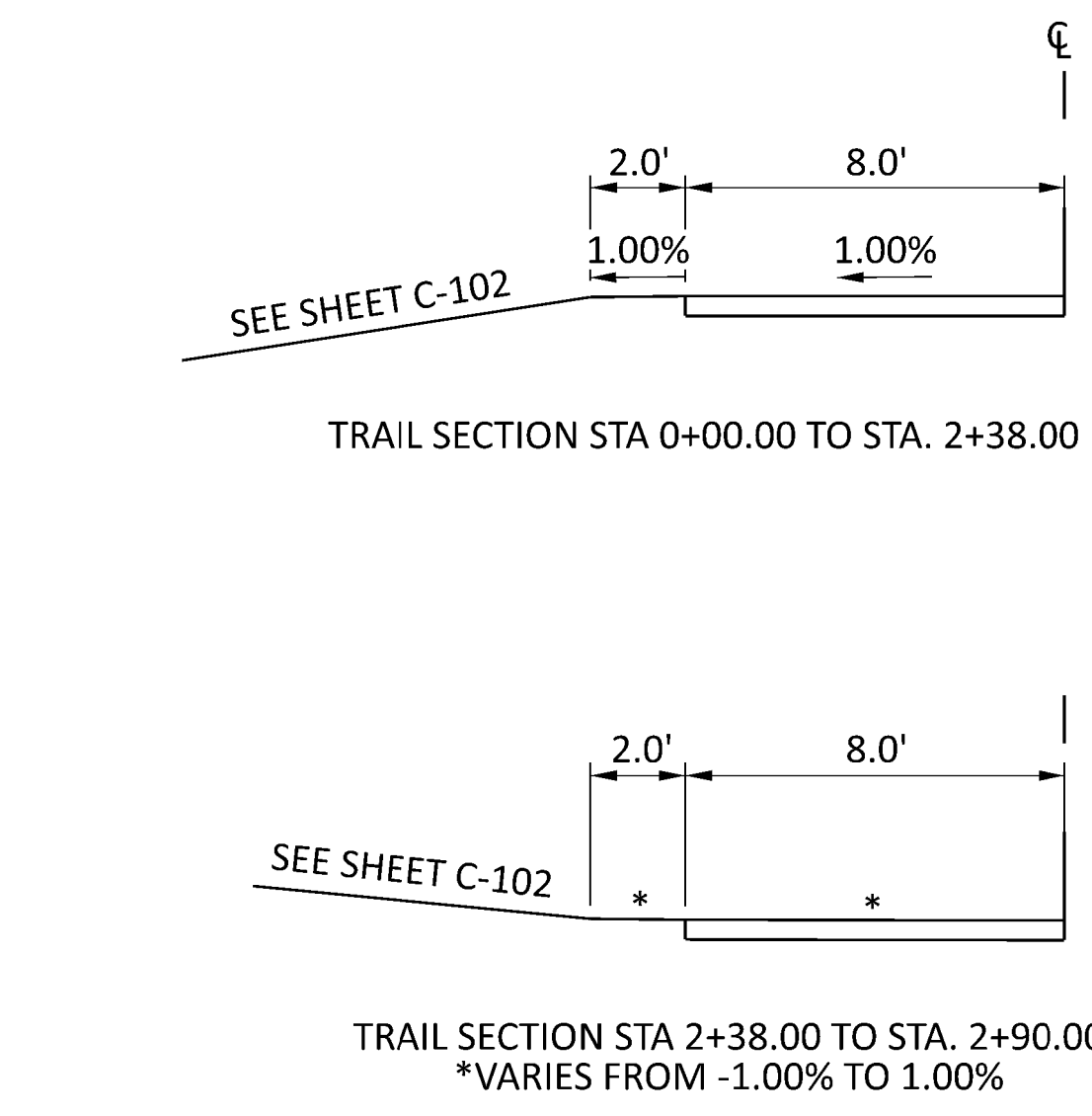
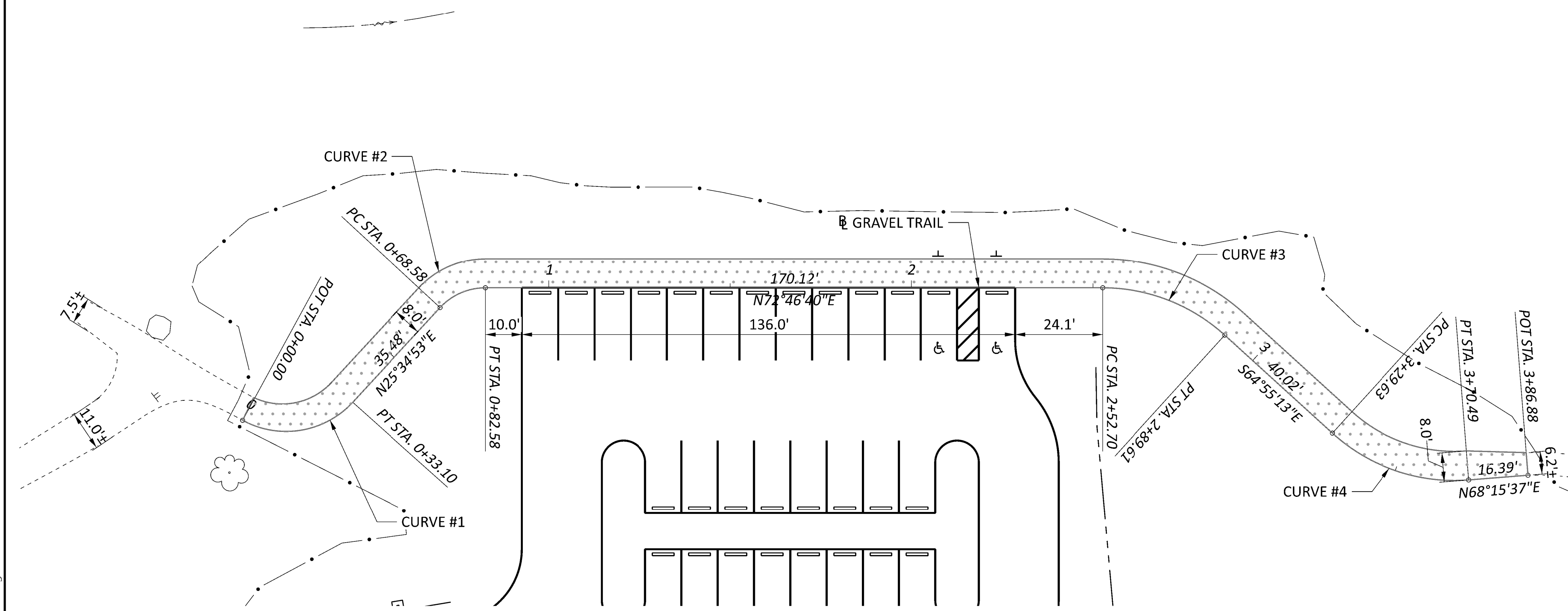
LEGEND



GRAVEL TRAIL, SEE DETAIL 01/C-501
(SEE SHEET C-201 FOR TRAIL DETAILS)

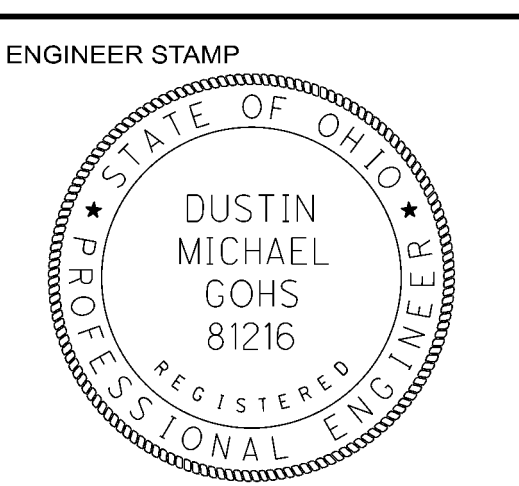
NOTES

1. THE CONTRACTOR SHALL ENSURE THAT THE GRASS SHOULDERS ADJACENT TO THE TRAIL SHALL HAVE A MAXIMUM SLOPE OF 3 (H):1 (V).

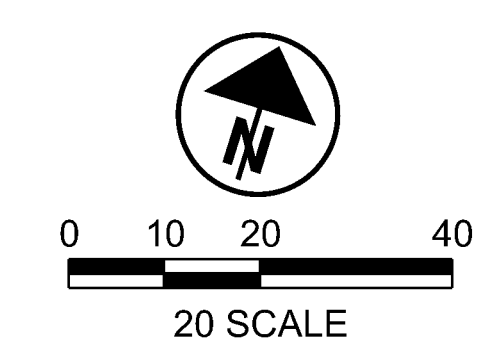


MCCAMMON CREEK PARK PARKING LOT

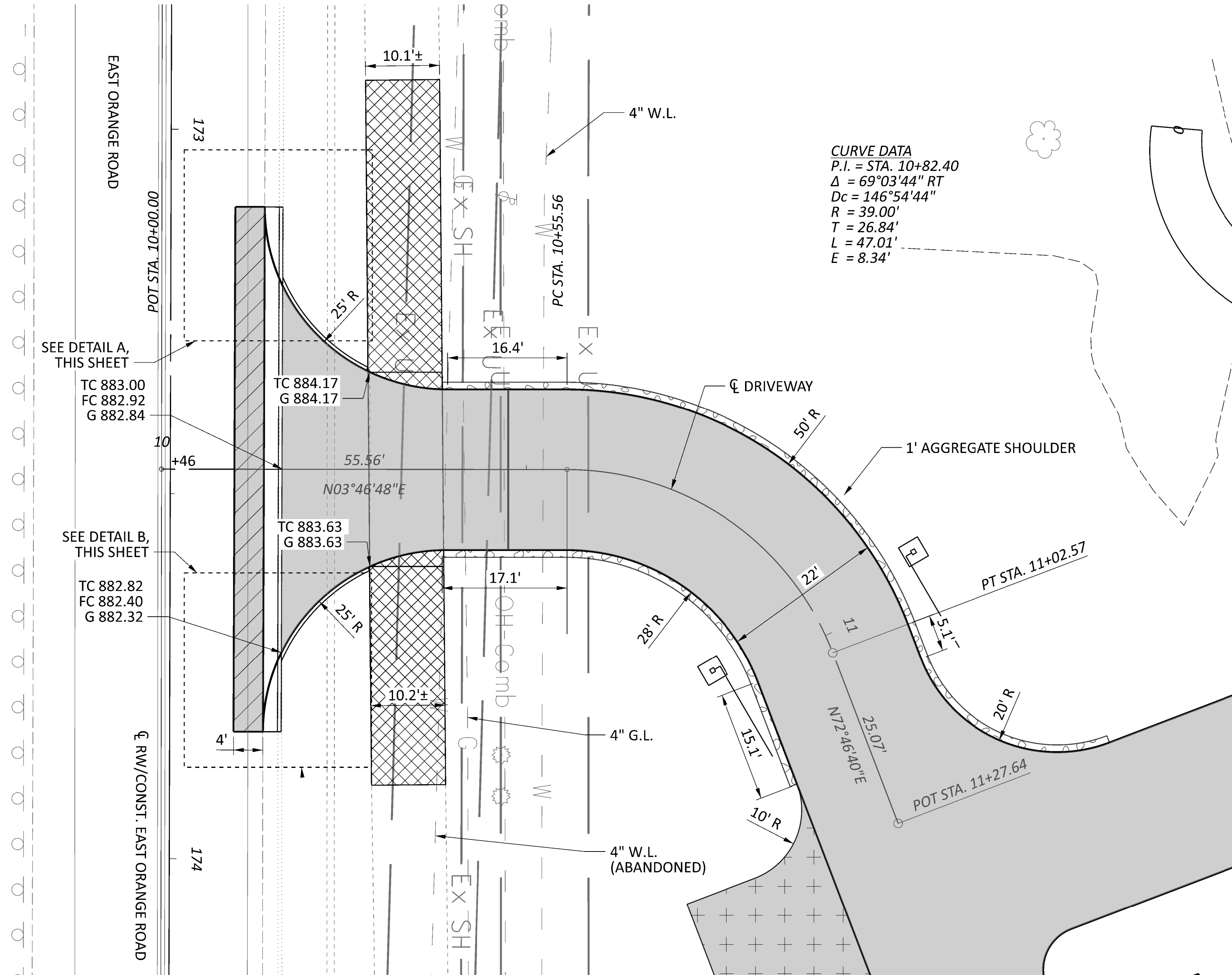
PRESERVATION PARKS OF DELAWARE COUNTY (PPDC)
DELAWARE COUNTY, OHIO



PROJECT NUMBER	PPDTR0006
DESIGNED BY	WCS
DRAWN BY	WCS
CHECKED BY	DMG
SUBMISSION	DATE
BID DOCUMENTS	04-23-24
SHEET TITLE	
TRAIL PLAN	
SHEET NO.	REVISION NO.
C-201	



F:\06A\PPD\TR\00006.McCammon_Park_parking_lot\00006\400-Engineering\Roadway\Sheets\00006.McCammon_C-201.dgn Sheet 4/23/2024 2:33:11 PM wishammon



CURVE DATA
 P.I. = STA. 10+82.40
 Δ = 69°03'44" RT
 Dc = 146°54'44"
 R = 39.00'
 T = 26.84'
 L = 47.01'
 E = 8.34'

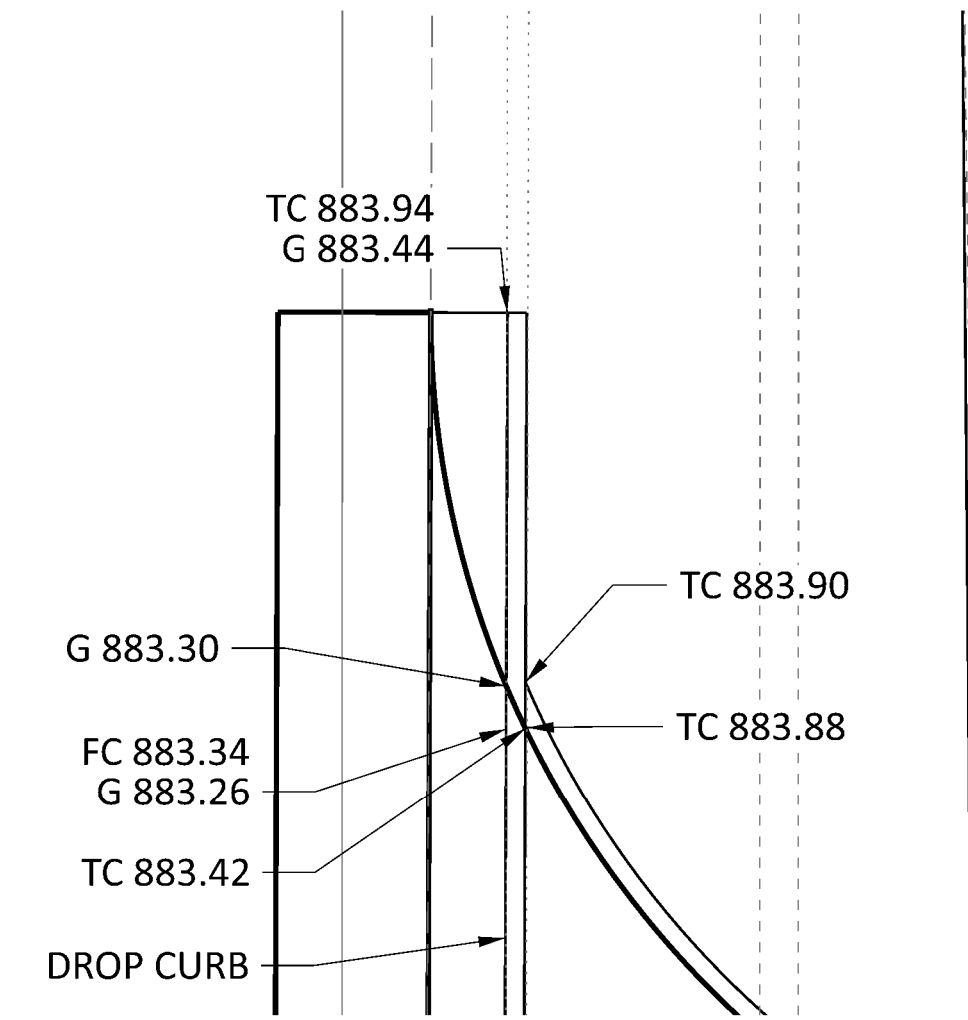
LEGEND

- FULL-DEPTH ASPHALT PAVEMENT (PARKING LOT AND DRIVEWAY), SEE DETAIL 01/C-501
- FULL-DEPTH ASPHALT PAVEMENT (EAST ORANGE ROAD), SEE DETAIL 01/C-501
- FUTURE PARKING LOT EXPANSION, TO BE FINE GRADED AS SHOWN ON C-102
- ASPHALT TRAIL REPLACEMENT, SEE DETAIL 01/C-501
- AGGREGATE SHOULDER, SEE DETAIL 05/C-501

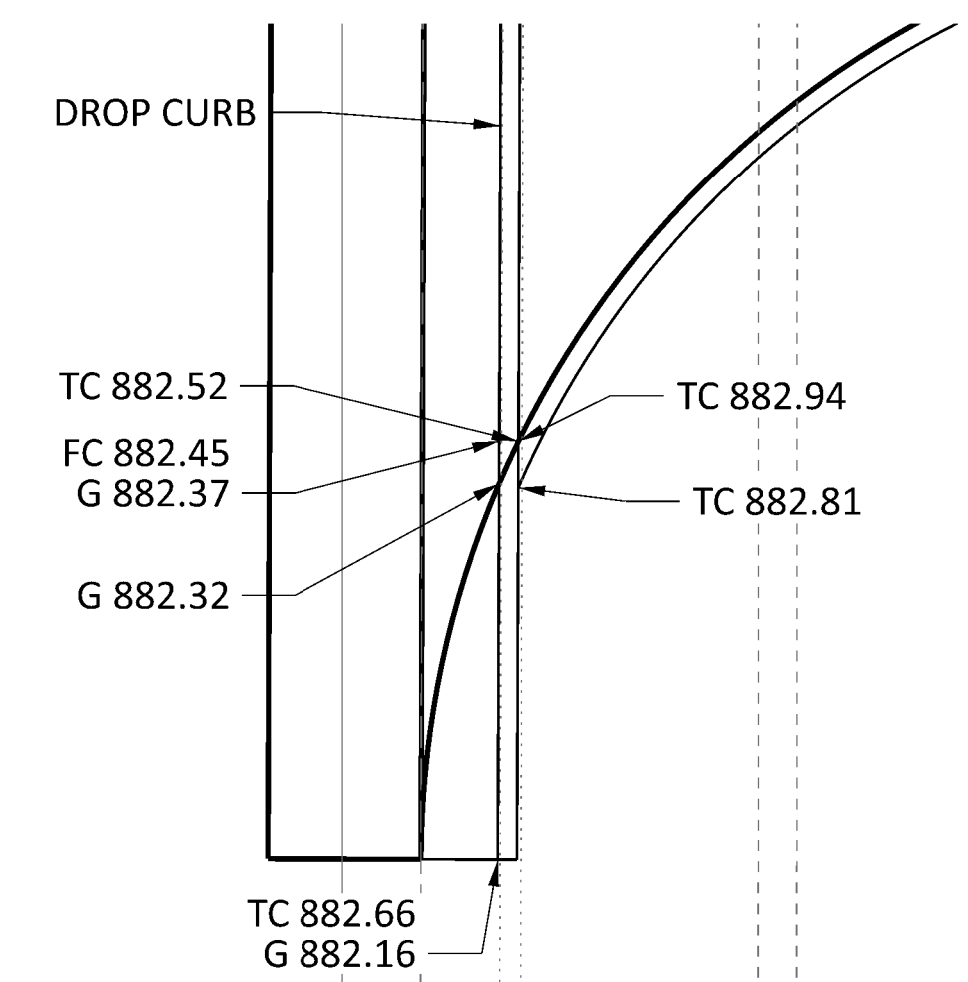
TC TOP OF CURB
 FC FACE OF CURB
 G GUTTER

NOTES

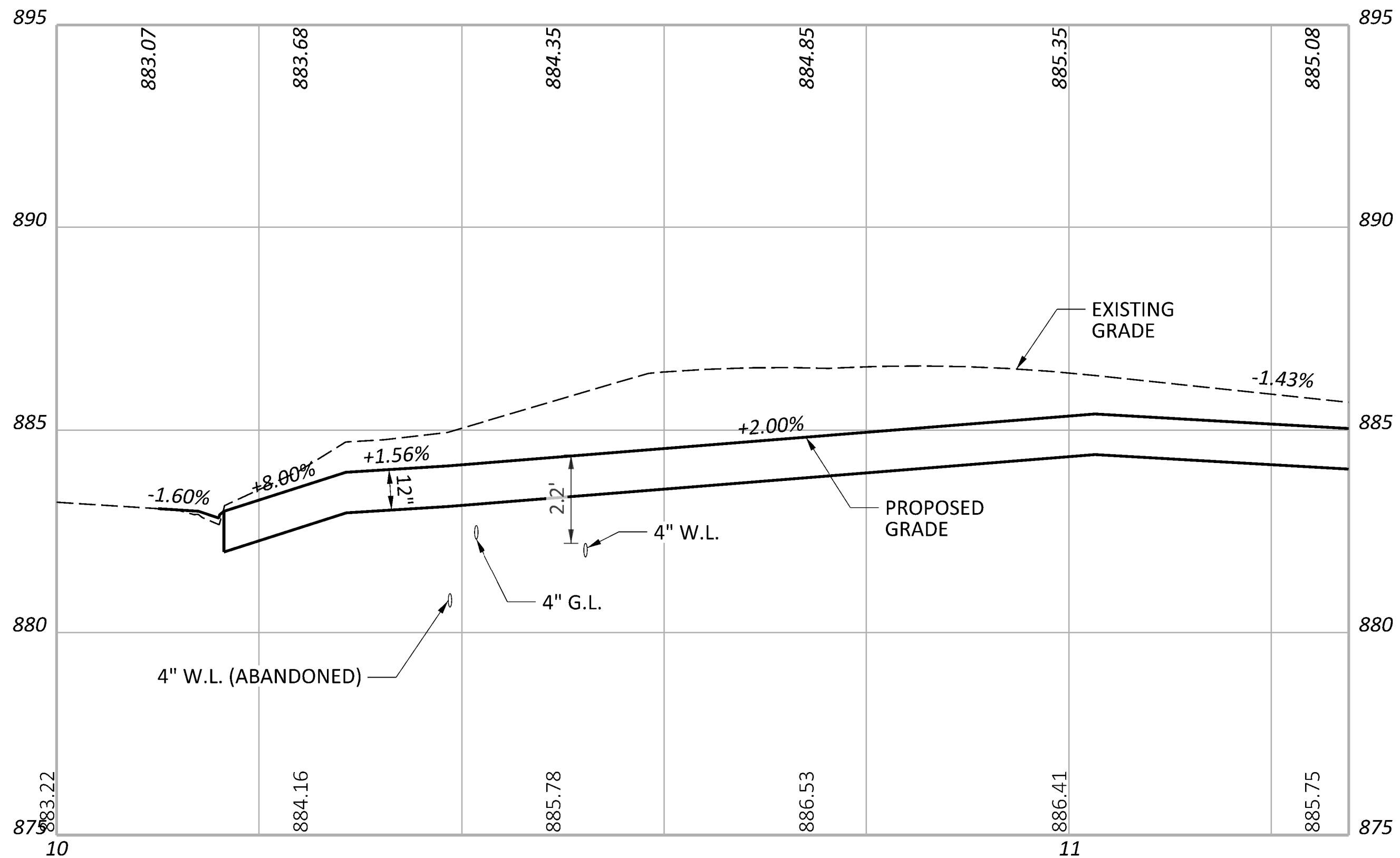
- THE CONTRACTOR SHALL ENSURE THAT THE GRASS SHOULDERS ADJACENT TO THE TRAIL SHALL HAVE A MAXIMUM SLOPE OF 3 (H):1 (V).



DETAIL A



DETAIL B



DATE

REVISIONS

NO.

MCCAMMON CREEK PARK PARKING LOT

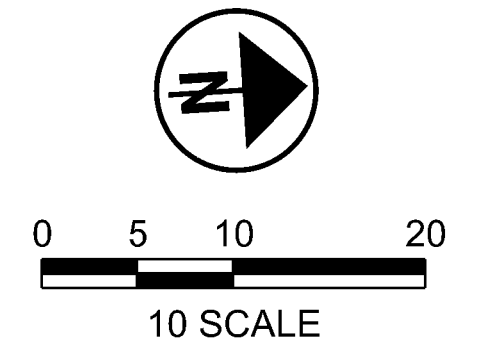
PRESERVATION PARKS OF DELAWARE COUNTY (PPDC)
DELAWARE COUNTY, OHIO

ENGINEER STAMP

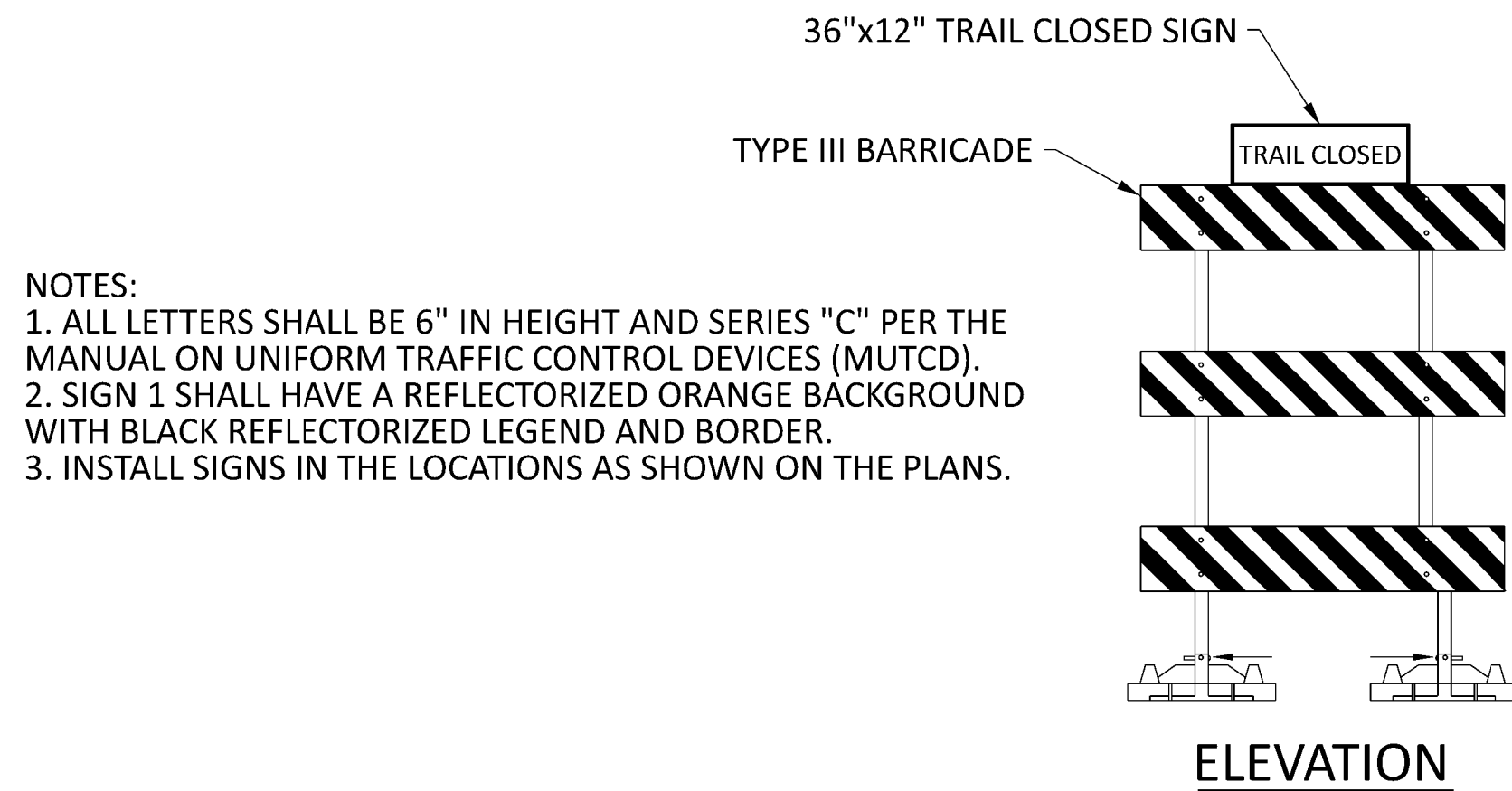
PROJECT NUMBER	PPDTR0006
DESIGNED BY	WCS
DRAWN BY	WCS
CHECKED BY	DMG
SUBMISSION	DATE
BID DOCUMENTS	04-23-24

SHEET TITLE
DRIVEWAY DETAILS

SHEET NO.	REVISION NO.
C-202	

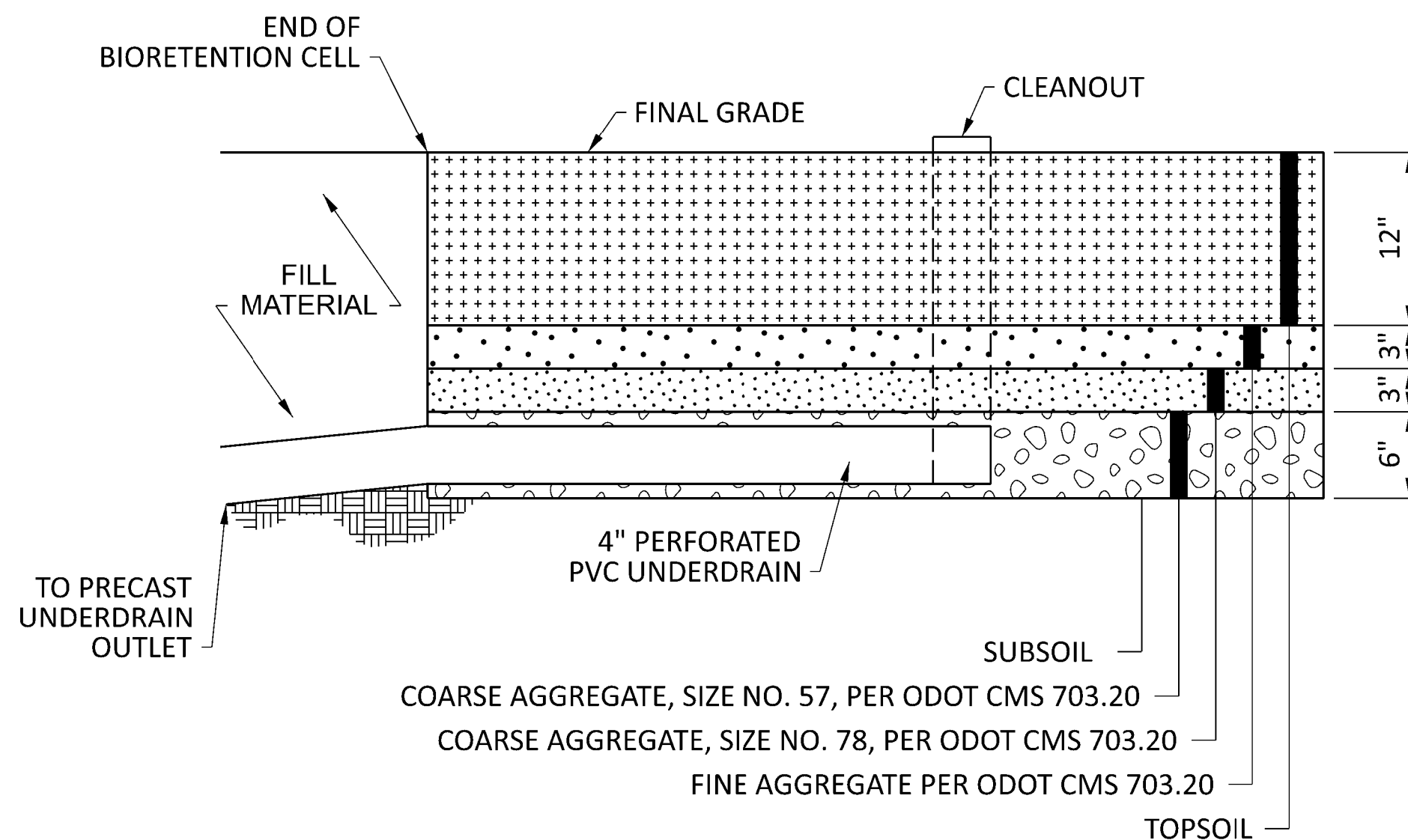


F:\06A\PPD\TR\0006.McCammon.Park.parking.lot\0006\400-Engineering\Roadway\Sheets\0006.McCammon.C-50.dgn Sheet 4/23/2024 2:29:22 PM wshannon



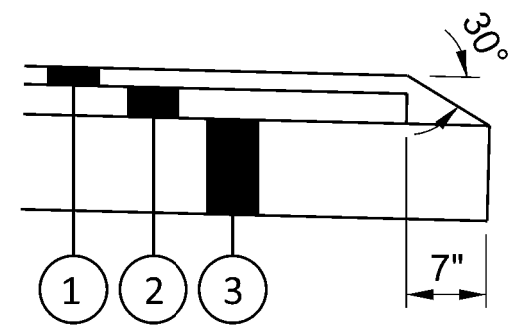
NOTES:
1. ALL LETTERS SHALL BE 6" IN HEIGHT AND SERIES "C" PER THE MANUAL ON UNIFORM TRAFFIC CONTROL DEVICES (MUTCD).
2. SIGN 1 SHALL HAVE A REFLECTORIZED ORANGE BACKGROUND WITH BLACK REFLECTORIZED LEGEND AND BORDER.
3. INSTALL SIGNS IN THE LOCATIONS AS SHOWN ON THE PLANS.

07 TYPE III BARRICADE



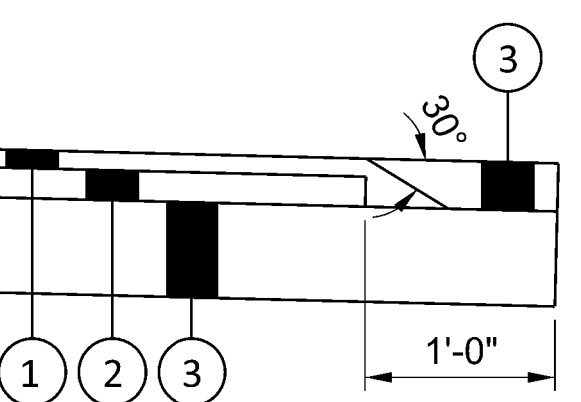
BIORETENTION CELL SECTION

06 BIORETENTION CELL



GRASS SHOULDER

1 ITEM 441 - A.C. SURFACE COURSE

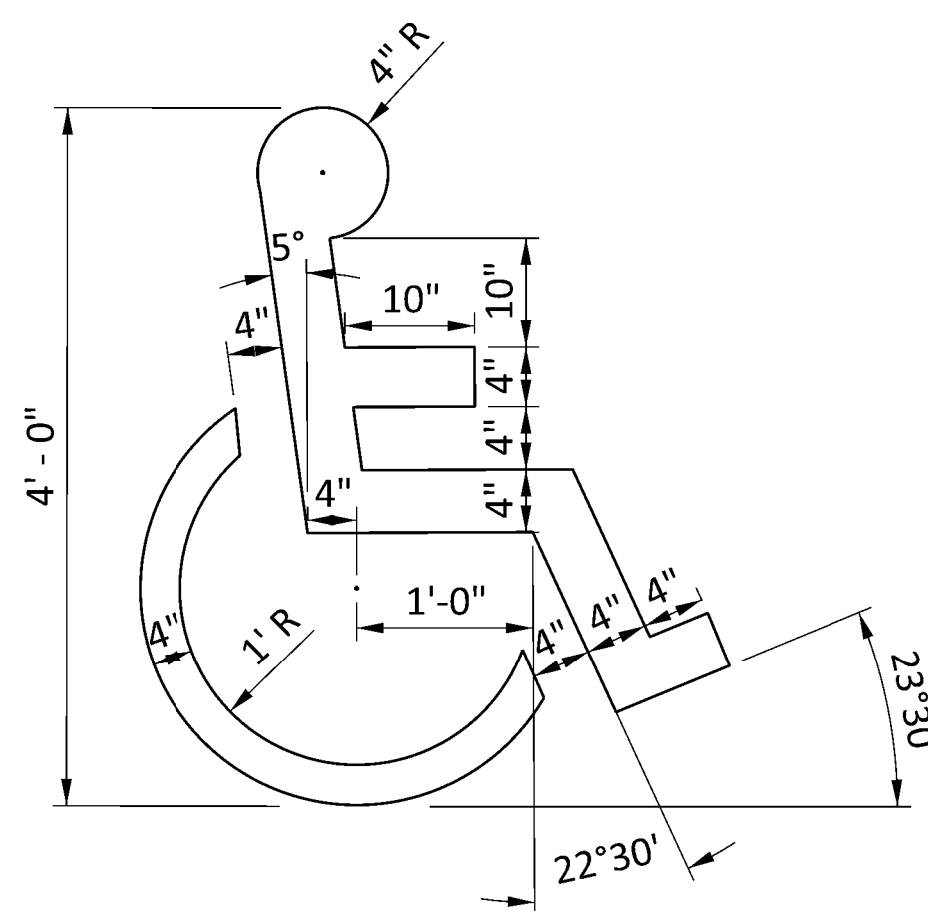


AGGREGATE SHOULDER

2 ITEM 441 - A.C. INTERMEDIATE COURSE

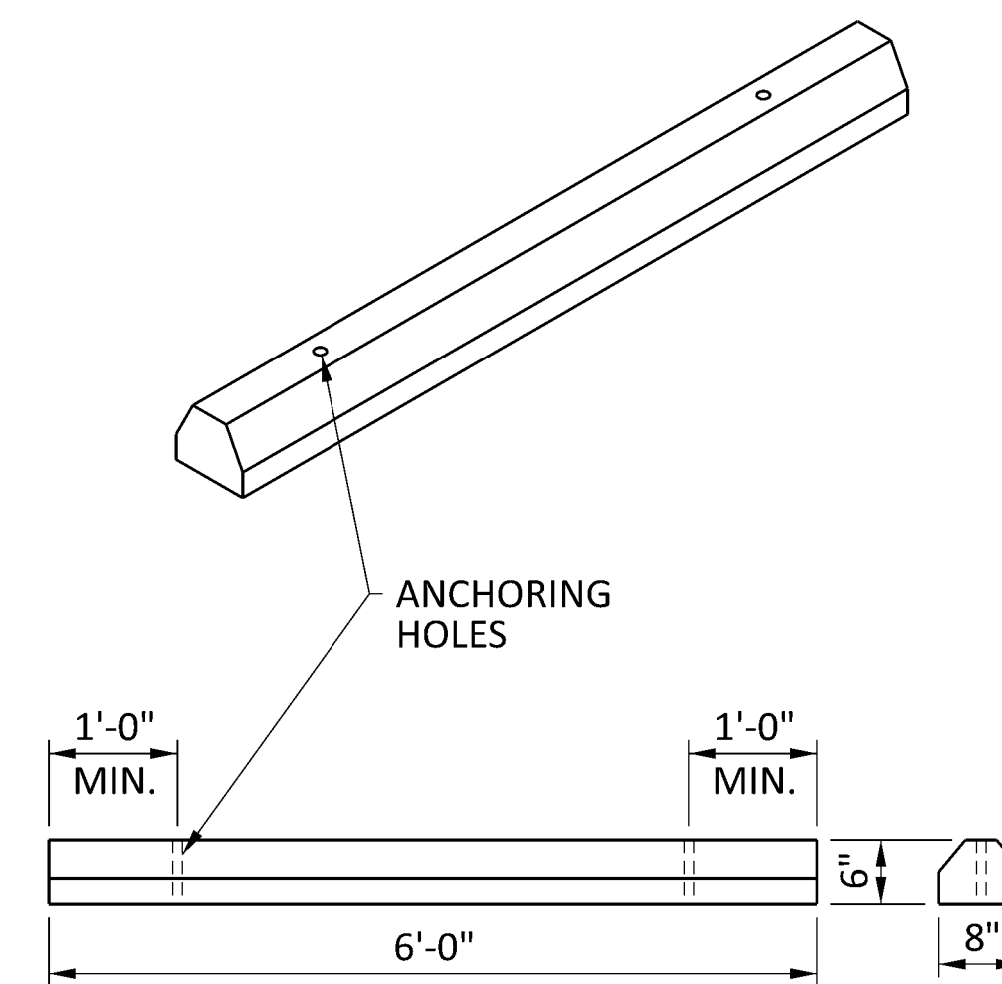
3 ITEM 304 - AGGREGATE BASE

05 ASPHALT SAFETY EDGE



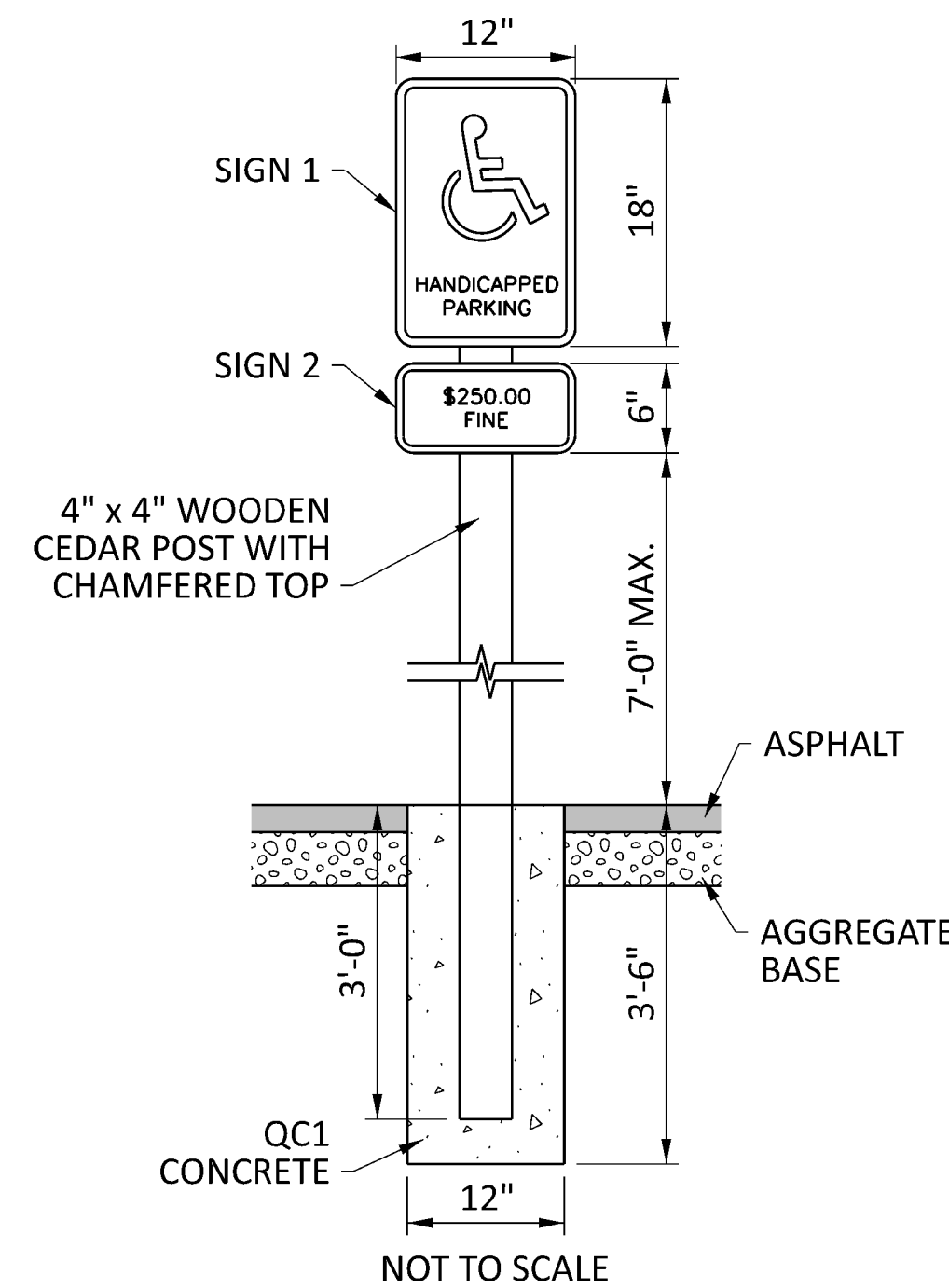
NOTES:
1. SYMBOL TO BE PAINTED ON ALL ADA PARKING SPACES.
2. PAINT COLOR SHALL BE BLUE.

04 PAINTED ADA PARKING SYMBOL (BY OTHERS)



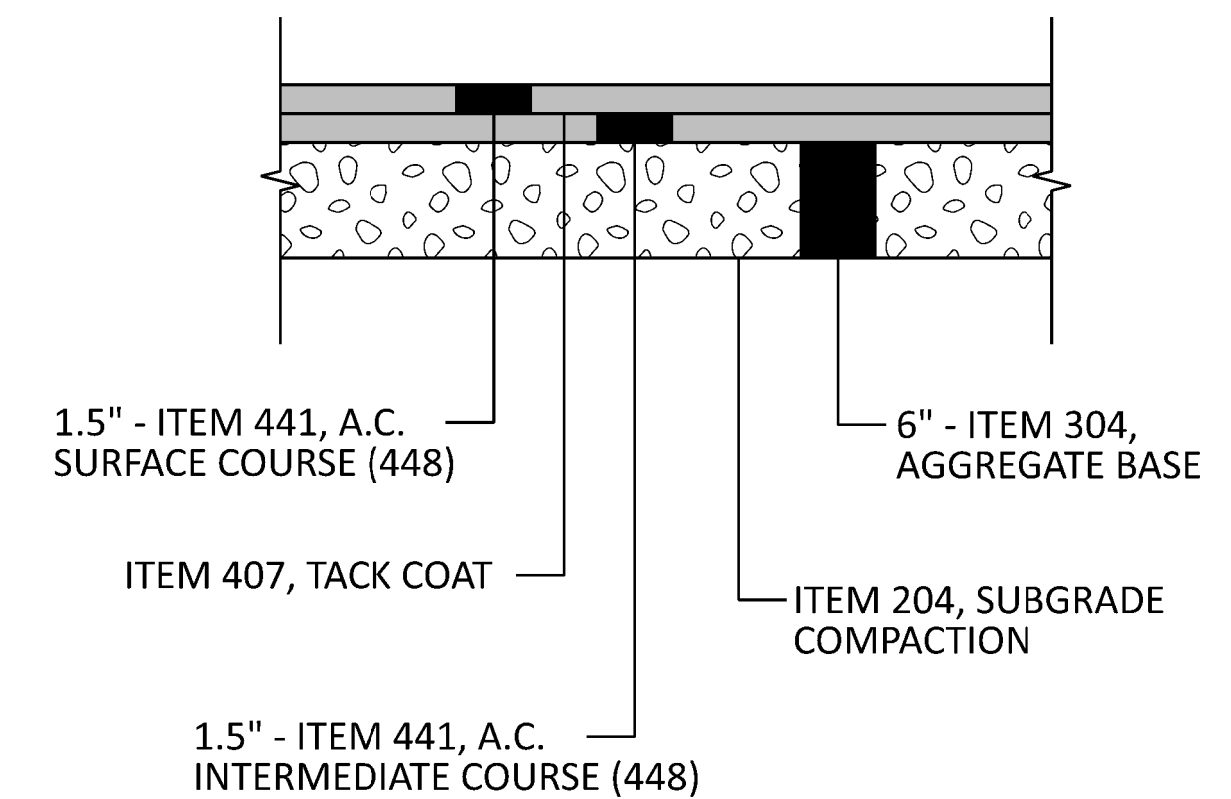
NOTES:
1. PARKING BLOCKS SHALL BE PRECAST CONCRETE WITH A MINIMUM COMPRESSIVE STRENGTH OF 5000 PSI.
2. USE RIGID MOLDS CONSTRUCTED TO MAINTAIN PRECAST UNITS UNIFORM IN SHAPE, SIZE, AND FINISH. MAINTAIN CONSISTENT QUALITY DURING MANUFACTURE.
3. EMBED REINFORCING STEEL AND DRILL OR SLEEVE FOR TWO DOWELS.
4. INSTALL UNITS WITHOUT DAMAGE TO SHAPE OR FINISH. REPLACE OR REPAIR DAMAGED UNITS.
5. INSTALL UNITS IN ALIGNMENT WITH ADJACENT WORK.
6. FASTEN UNITS IN PLACE WITH TWO DOWELS FOR EACH BLOCK.
7. CORE DRILL PAVEMENT 3/8" LARGER THAN DOWEL. SEAL ANNULAR SPACE AROUND HOLE WITH GROUT OR SEALANT.

03 CONCRETE PARKING BLOCK

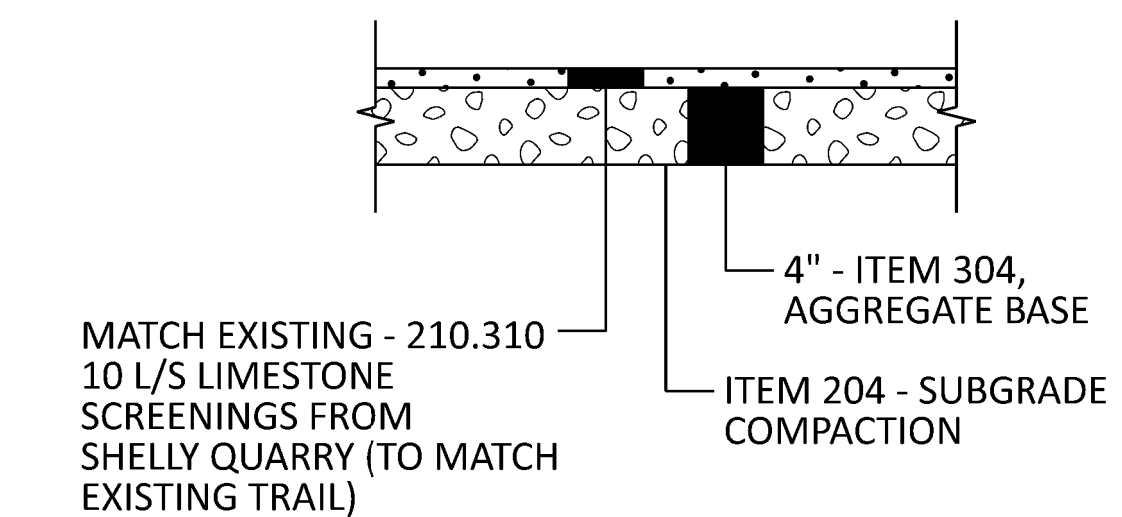


NOTES:
1. ALL LETTERS SHALL BE 1" IN HEIGHT AND SERIES "C" PER THE MANUAL ON UNIFORM TRAFFIC CONTROL DEVICES (MUTCD).
2. SIGN 1 SHALL HAVE A REFLECTORIZED WHITE BACKGROUND WITH BLUE REFLECTORIZED LEGEND AND BORDER.
3. SIGN 2 SHALL HAVE A REFLECTORIZED BLUE BACKGROUND WITH WHITE REFLECTORIZED LEGEND AND BORDER.
4. ONE (1) SIGN REQUIRED FOR EACH PARKING SPACE AS SHOWN ON PLANS.
5. INSTALLED HEIGHT OF SIGN SHALL BE IN ACCORDANCE WITH SECTION 24-23 OF THE MUTCD.

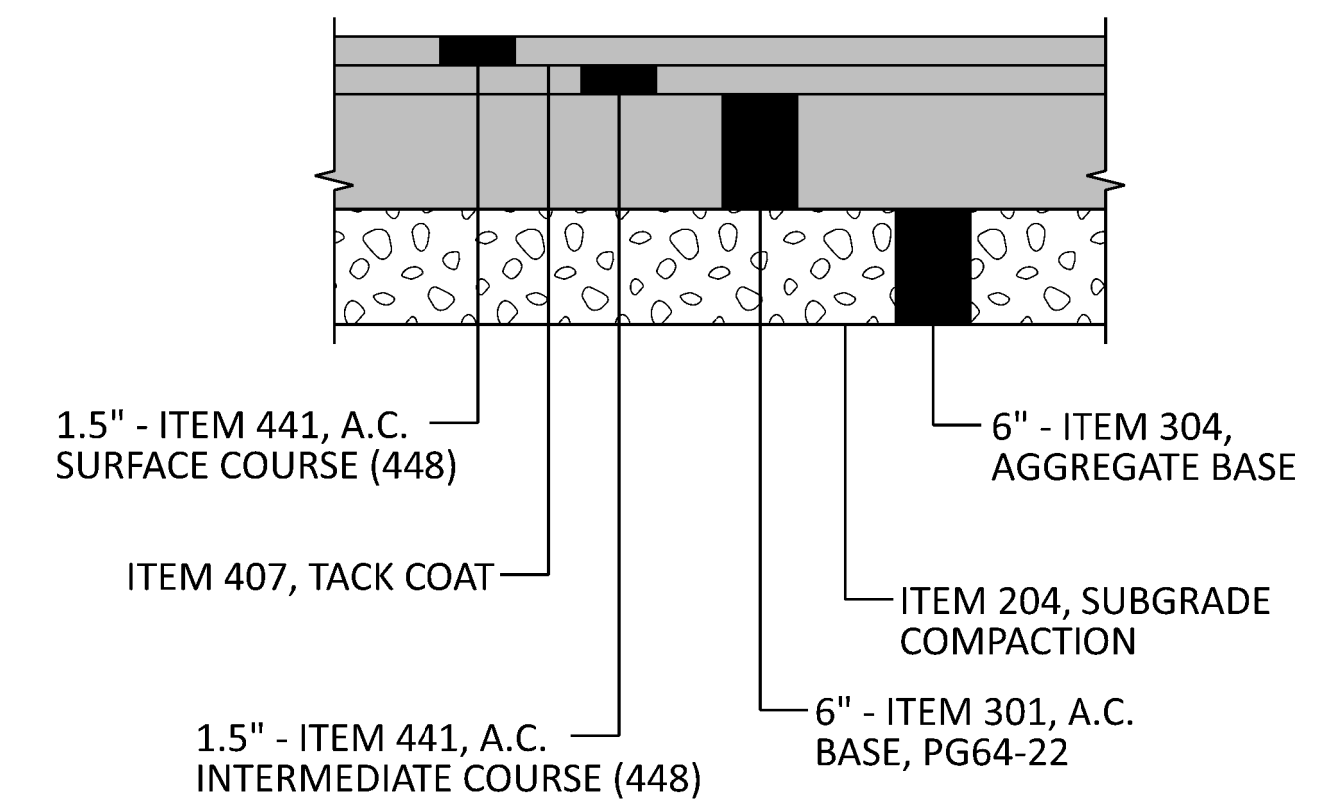
02 ADA PARKING SIGN



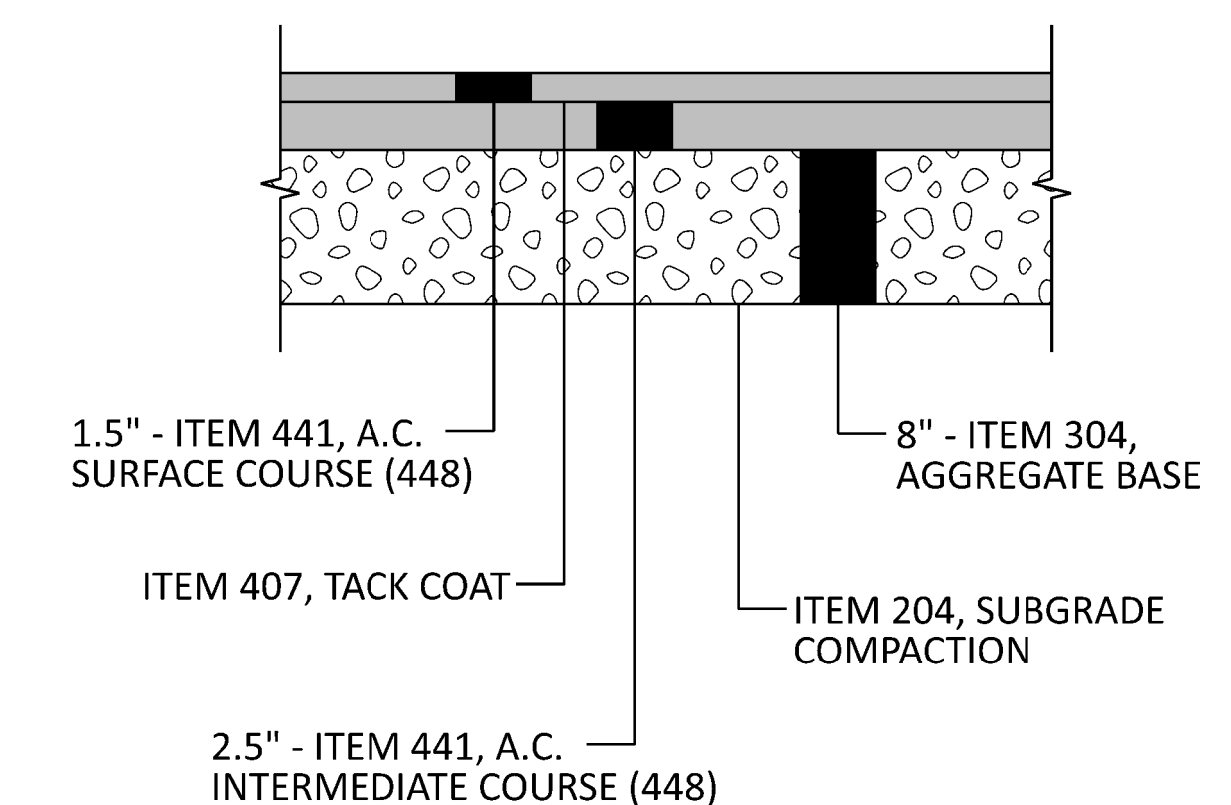
PAVED TRAIL



GRAVEL TRAIL



FULL-DEPTH ASPHALT PAVEMENT (EAST ORANGE ROAD)



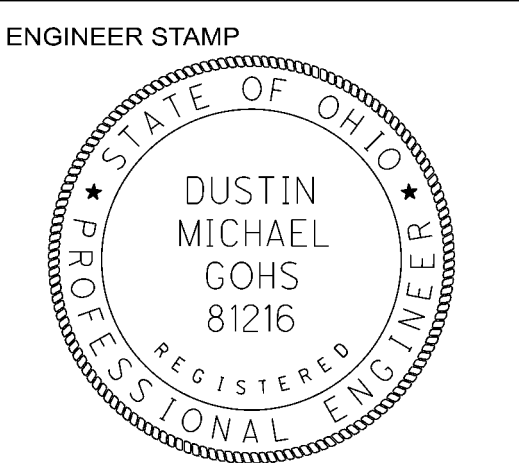
FULL-DEPTH ASPHALT PAVEMENT (PARKING LOT AND DRIVEWAY)

01 PAVEMENT DETAILS

NO.	REVISIONS	DATE

**MCCAMMON CREEK PARK
PARKING LOT**

PRESERVATION PARKS OF DELAWARE COUNTY (PPDC)
DELAWARE COUNTY, OHIO



PROJECT NUMBER	PPDTR0006
DESIGNED BY	WCS
DRAWN BY	WCS
CHECKED BY	DMG
SUBMISSION	DATE
BID DOCUMENTS	04-23-24

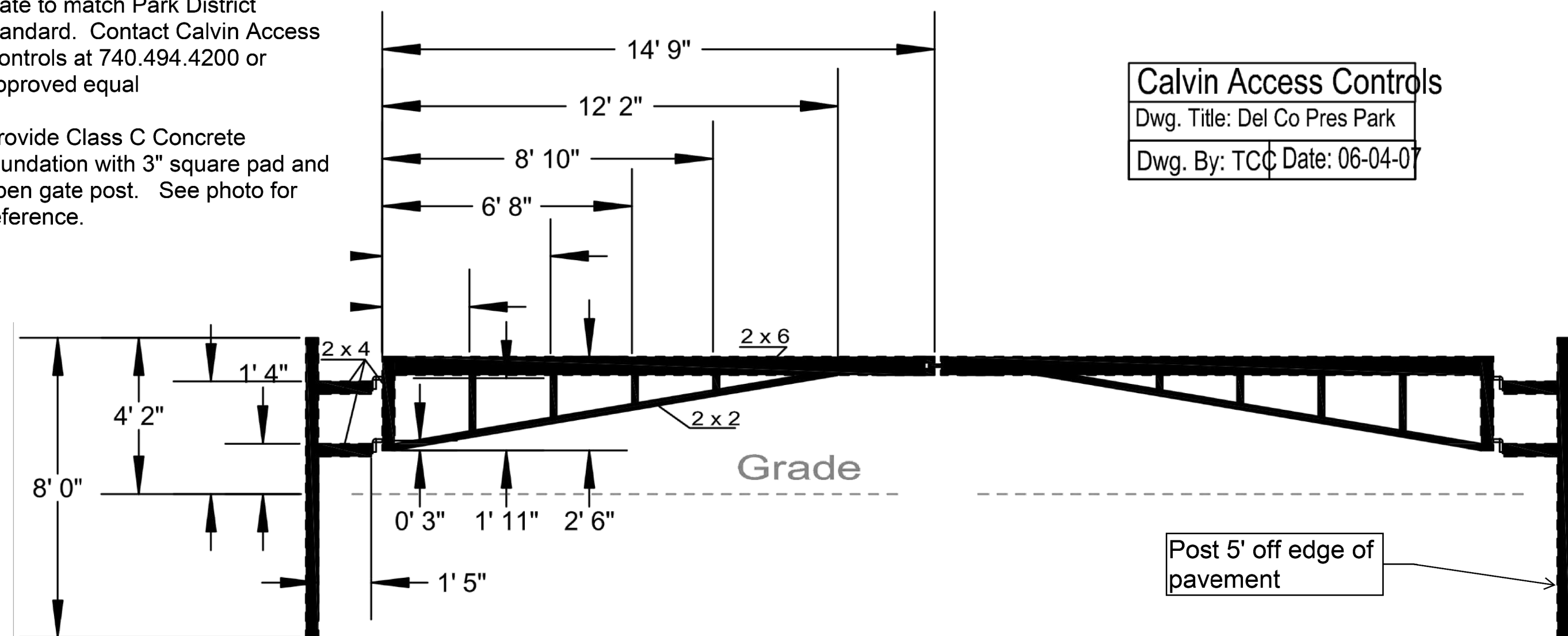
SHEET TITLE
SITE DETAILS

SHEET NO.	REVISION NO.
C-501	

F:\06A\PPD\TR\0006.McCammon.Park.parking.lot\00006\400-Engineering\Roadway\Sheets\00006.McCammon.C-502.dgn Sheet 4/23/2024 2:26:30 PM wshannon

Note:
Gate to match Park District standard. Contact Calvin Access Controls at 740.494.4200 or approved equal

Provide Class C Concrete foundation with 3" square pad and open gate post. See photo for reference.



Calvin Access Controls
Dwg. Title: Del Co Pres Park
Dwg. By: TC Date: 06-04-07

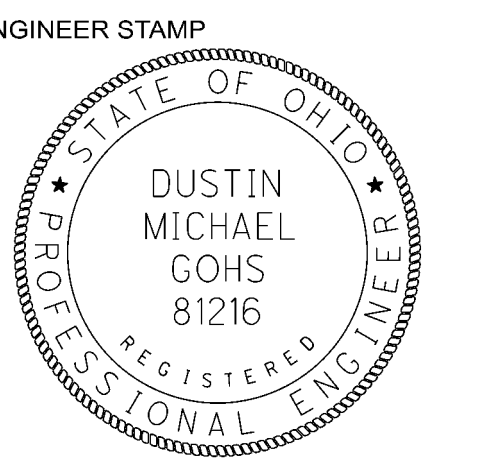
NOTES:

1. DETAIL IS FOR ILLUSTRATIVE PURPOSE ONLY.
2. CONTRACTOR SHALL FIELD MEASURE AND PROVIDE SHOP DRAWINGS FOR OWNER APPROVAL.



MCCAMMON CREEK PARK
PARKING LOT
PRESERVATION PARKS OF DELAWARE COUNTY (PPDC)
DELAWARE COUNTY, OHIO

NO.	REVISIONS	DATE

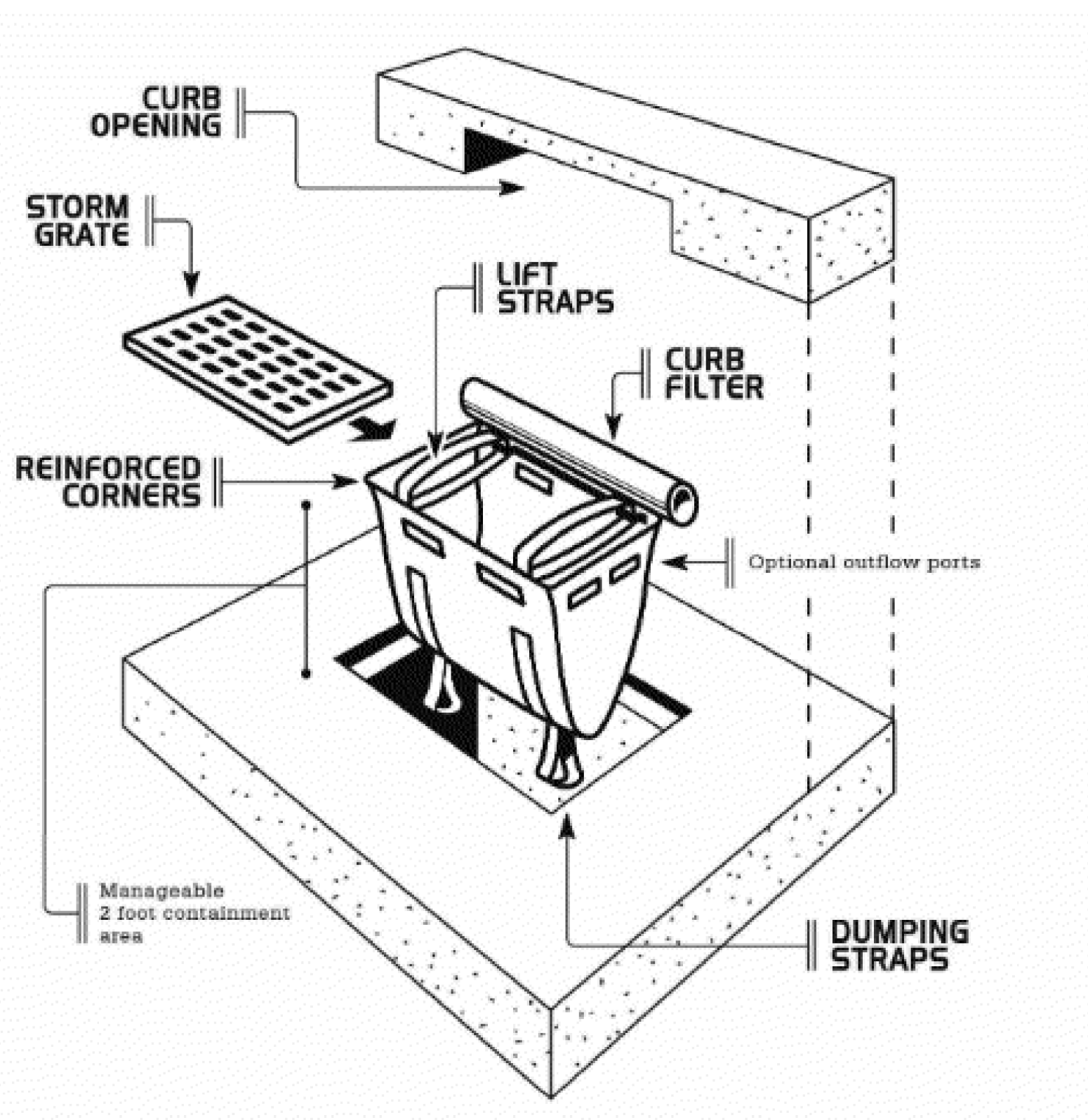


PROJECT NUMBER	PPDTR0006
DESIGNED BY	WCS
DRAWN BY	WCS
CHECKED BY	DMG
SUBMISSION	DATE
BID DOCUMENTS	04-23-24

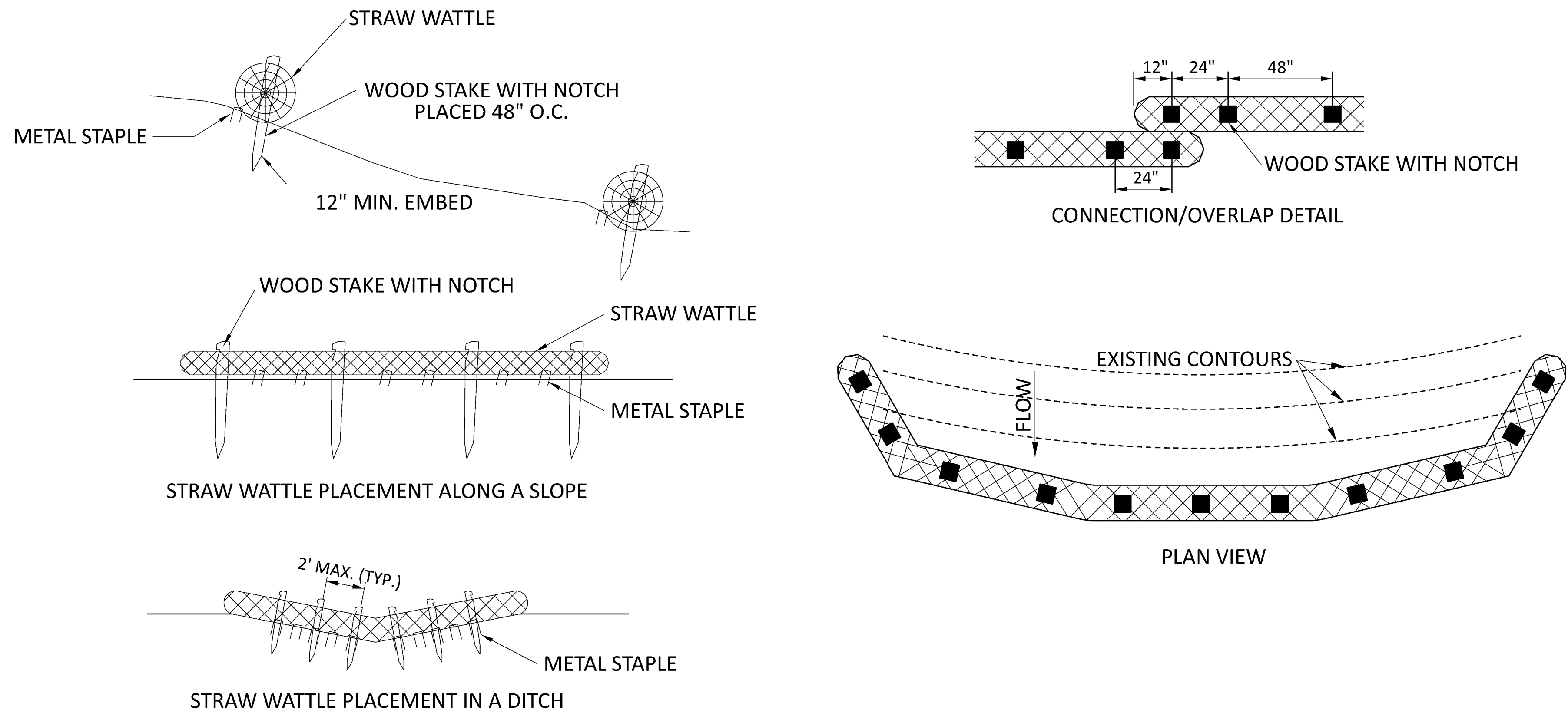
SHEET TITLE
SITE DETAILS

SHEET NO.	REVISION NO.
C-502	

F:\06A\PPD\TR\0006.McCammon.Park.parking.lot\00006\400-Engineering\Roadway\Sheets\00006.McCammon.C-503.dgn Sheet 4/23/2024 2:25:43 PM wshannon



- NOTES:
1. PRODUCT IS TO BE DANDY PRODUCTS, DANDY CURB SACK OR APPROVED ALTERNATE
 2. INSTALLATION AND MAINTENANCE ARE TO BE COMPLETED IN ACCORDANCE WITH MANUFACTURER'S SPECIFICATIONS.



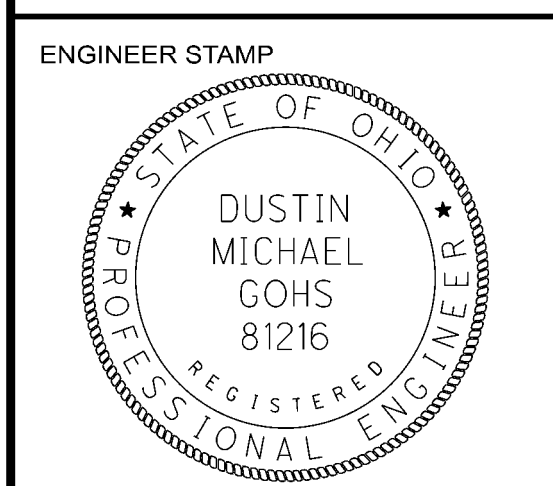
- NOTES:
1. INSTALLATION TO BE COMPLETED IN ACCORDANCE WITH MANUFACTURER'S SPECIFICATIONS.

STRAW WATTLE DETAIL

NO.	REVISIONS	DATE

**MCCAMMON CREEK PARK
PARKING LOT**

PRESERVATION PARKS OF DELAWARE COUNTY (PPDC)
DELAWARE COUNTY, OHIO



PROJECT NUMBER	PPDTR0006
DESIGNED BY	WCS
DRAWN BY	WCS
CHECKED BY	DMG
SUBMISSION	DATE
BID DOCUMENTS	04-23-24

SHEET TITLE
**EROSION CONTROL
DETAILS**

SHEET NO.	REVISION NO.
C-503	

02 INLET PROTECTION

01 SILT FENCE