

SITE DATA

SITE AREA:	±478 ACRES
STREAM LENGTH:	±12,000 LF
WETLAND AREA:	±15.4 ACRES (3%)
FORESTED AREA:	±157 ACRES (33%)

KEY





	NATURAL RESOURCES PLANTED
	EXISTING WETLANDS
	H2OHIO 2023/2024


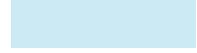
PARK VISION

- HISTORICAL THEMED - 1800S HOUSE, LOG CABIN, PHOTO STUDIO, PERFECT SCHOOLHOUSE
- TRANSPORTATION - ORIGINAL 3C HIGHWAY, OHIO TO ERIE TRAIL, RAILROAD (CLEVELAND, AKRON, AND COLUMBUS RAILWAY)
- RESTORATION AND PROTECTION - PERFECT CREEK, WETLANDS, REFORESTATION, HABITAT CREATION
- EXPAND HEALTH AND WELLNESS ACTIVITIES, OUTDOOR EXPLORATION
- OPERATIONS OFFICE - SERVICE PERFECT CREEK PARK, ORCHARD OAKS PRESERVE, OHIO TO ERIE TRAIL



- ### CONCEPT PLAN KEY
- A** PARKING LOT, KIOSK, RESTROOM, SHELTER
 - B** BRIDGE TO ACCESS OTET
 - C** PERFECT SANDEL FARM
 - D** PERFECT SCHOOLHOUSE
 - E** INDOOR ARCHERY FACILITY
 - F** 3D ARCHERY COURSE
 - G** CONSTRUCTED OVERLOOK/SHELTER
 - H** OPERATIONS OFFICE AND POLICE TRAINING RANGE
 - J** STORAGE AREA

	ASPHALT ENTRY DRIVE	± 1.0 MI
	10' MULTI-USE ASPHALT TRAIL	± 2.7 MI
	6' GRAVEL TRAIL	± 4.6 MI
	2' PRIMITIVE TRAIL	± 0.9 MI
TOTAL TRAIL:		±8.2 MI

-  EXISTING WETLANDS
-  FUTURE WETLANDS
-  PROPOSED WETLAND MITIGATION BANK AREA (APPROXIMATE)



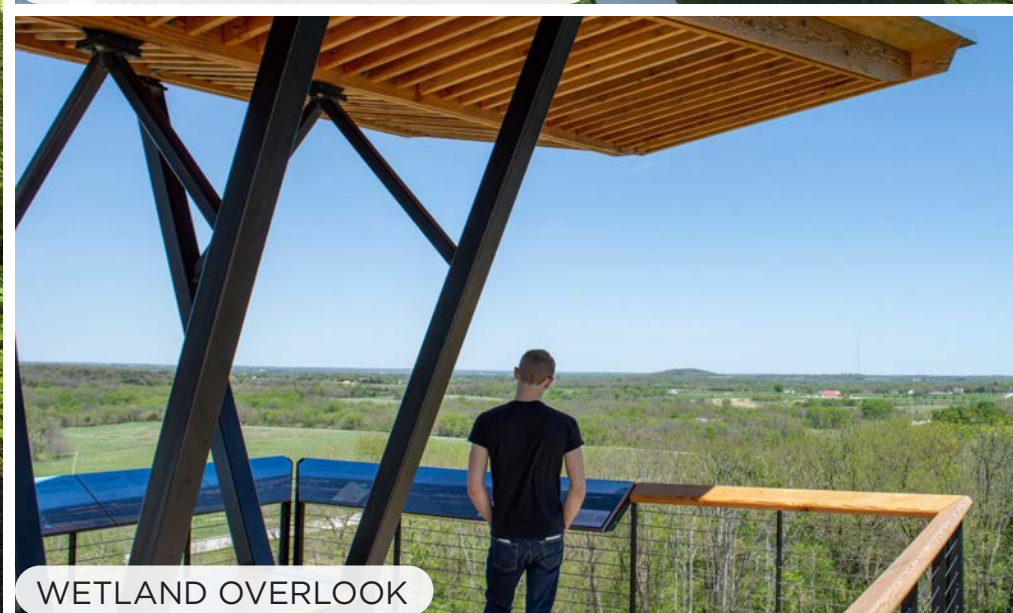
MULTI-USE ASPHALT PATH



PARK POLICE TRAINING RANGE



INDOOR ARCHERY FACILITY



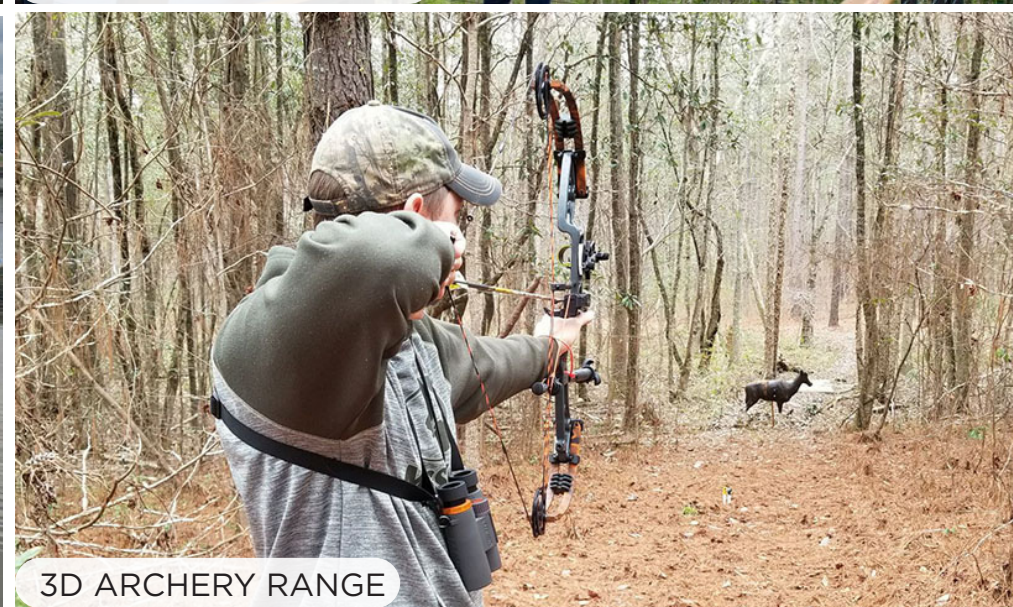
WETLAND OVERLOOK



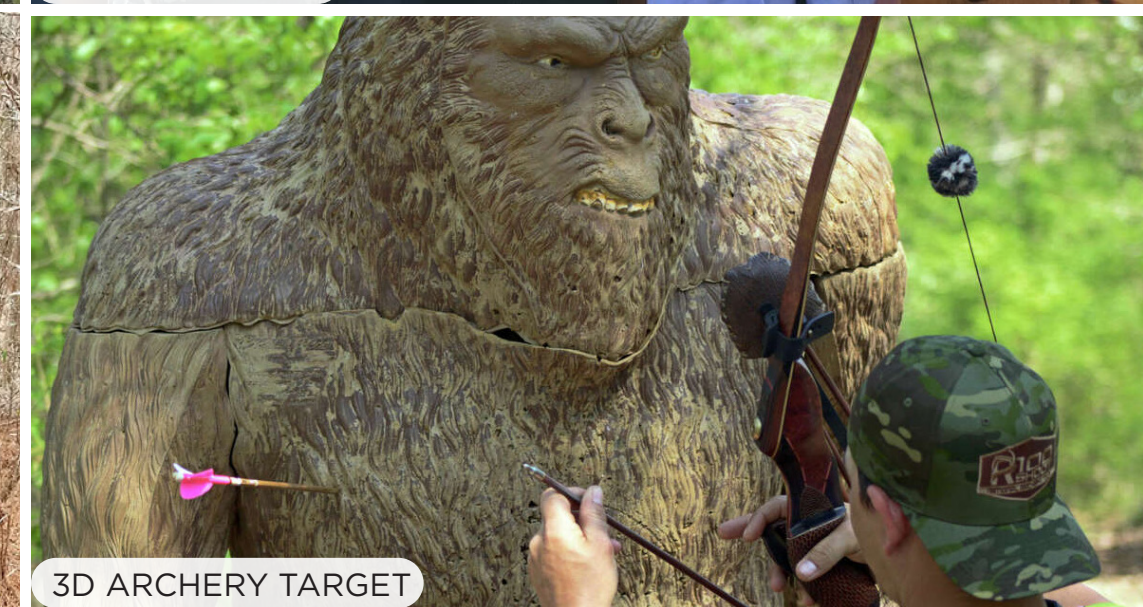
WILDLIFE BLIND



CONSTRUCTED WETLANDS



3D ARCHERY RANGE



3D ARCHERY TARGET



NO DESIGNATED FUTURE USE



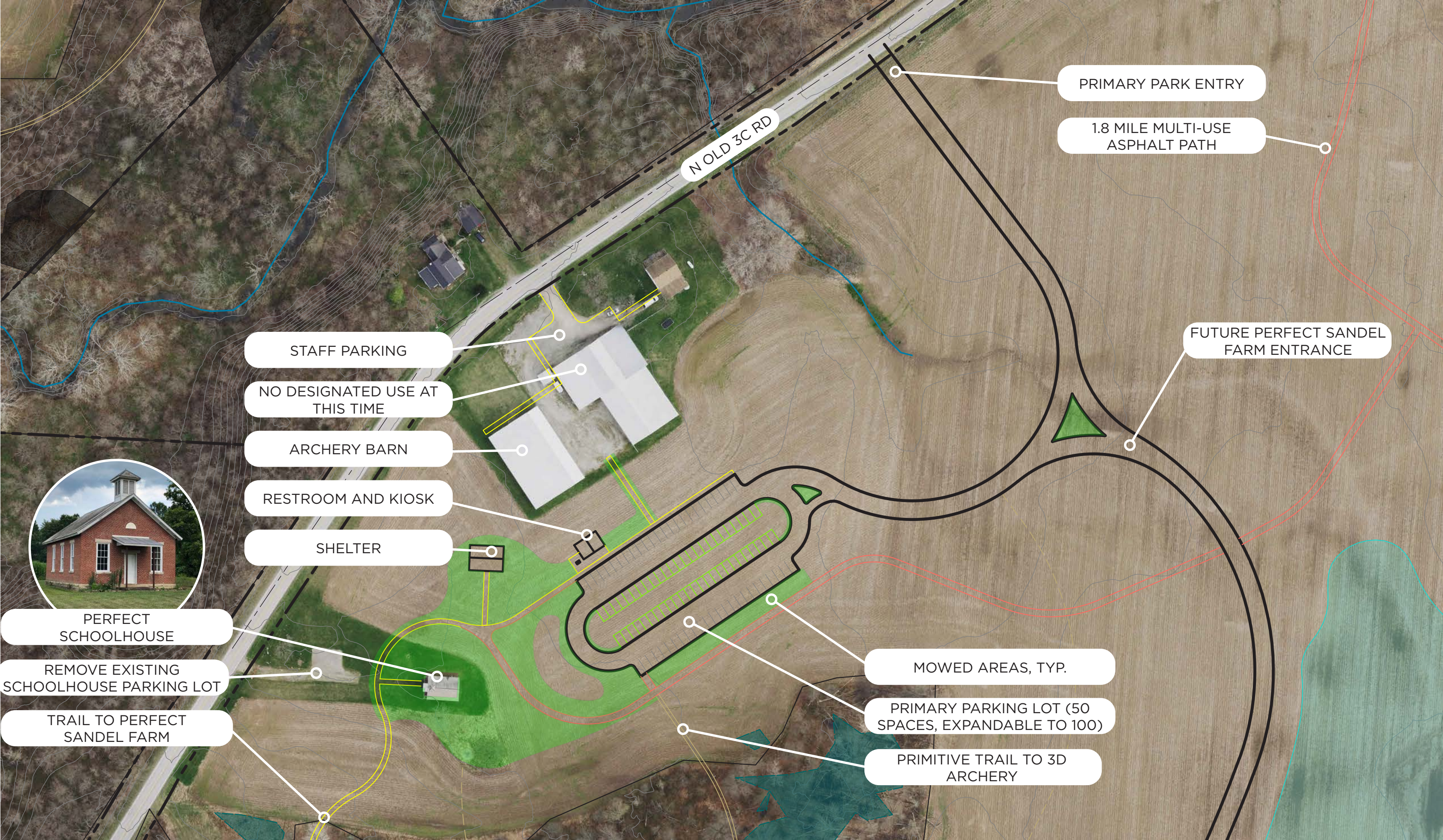
FUTURE ARCHERY FACILITY



CURRENT STORAGE FACILITY - NO FUTURE USE



FUTURE OPERATIONS OFFICE



PRIMARY PARK ENTRY

1.8 MILE MULTI-USE ASPHALT PATH

FUTURE PERFECT SANDEL FARM ENTRANCE

STAFF PARKING

NO DESIGNATED USE AT THIS TIME

ARCHERY BARN

RESTROOM AND KIOSK

SHELTER



PERFECT SCHOOLHOUSE

REMOVE EXISTING SCHOOLHOUSE PARKING LOT

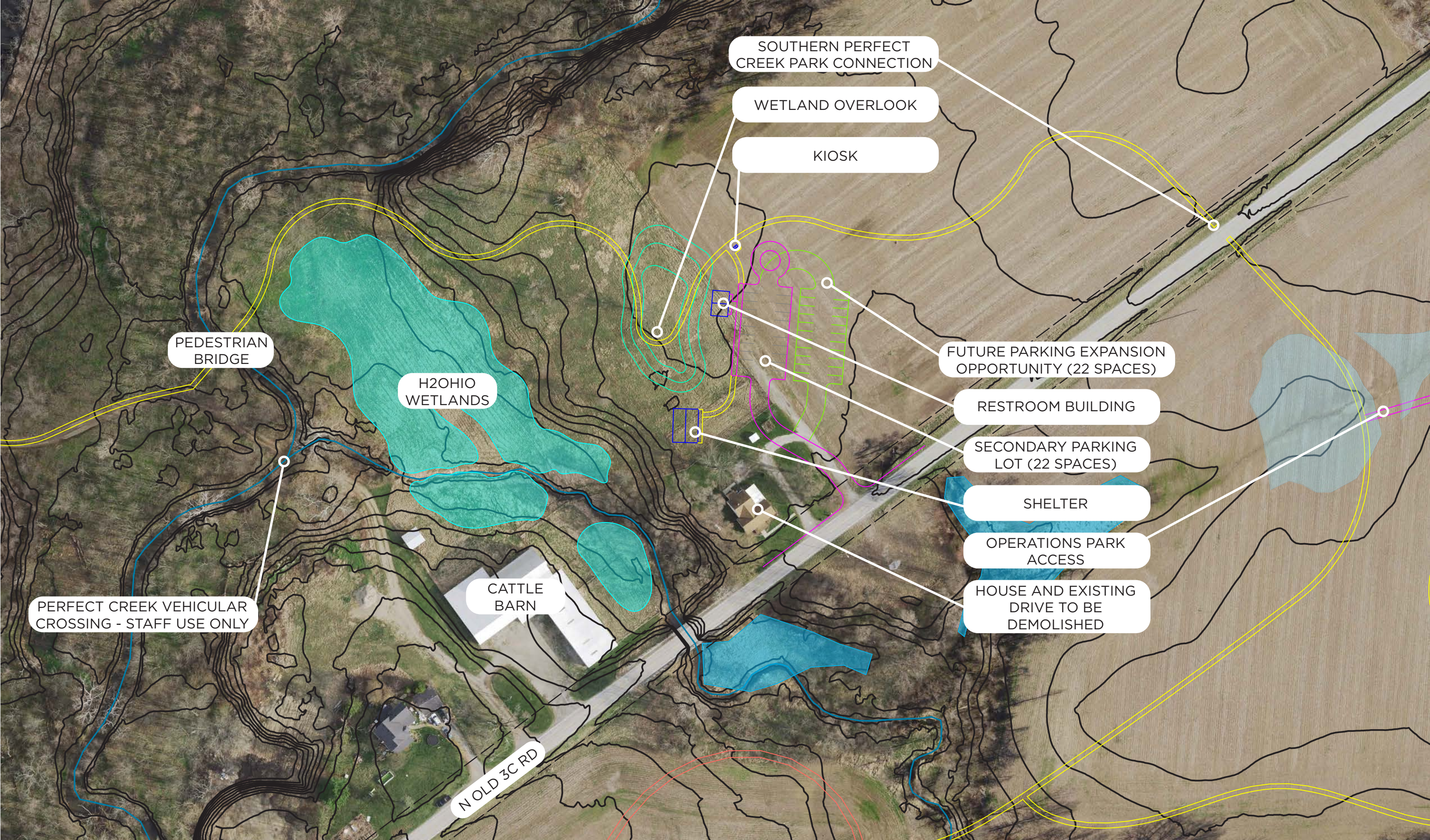
TRAIL TO PERFECT SANDEL FARM

MOWED AREAS, TYP.

PRIMARY PARKING LOT (50 SPACES, EXPANDABLE TO 100)

PRIMITIVE TRAIL TO 3D ARCHERY

N OLD 3C RD



PERFECT CREEK VEHICULAR
CROSSING - STAFF USE ONLY

PEDESTRIAN
BRIDGE

H2OHIO
WETLANDS

CATTLE
BARN

N OLD 3C RD

SOUTHERN PERFECT
CREEK PARK CONNECTION

WETLAND OVERLOOK

KIOSK

FUTURE PARKING EXPANSION
OPPORTUNITY (22 SPACES)

RESTROOM BUILDING

SECONDARY PARKING
LOT (22 SPACES)

SHELTER

OPERATIONS PARK
ACCESS

HOUSE AND EXISTING
DRIVE TO BE
DEMOLISHED



STORAGE BARN AND OFFICE



LOG CABIN



OLD 3C HIGHWAY



JOHN PERFECT FARMHOUSE



PHOTO STUDIO



CHICKEN COOP



EXISTING LAWN



STONE PATIO



GOAT CORRAL



SANDEL MEMORIAL



STORAGE BARN AND OFFICE



PHOTO STUDIO



LOG CABIN



STONE PATIO



JOHN PERFECT FARMHOUSE



CHICKEN COOP



POND



OLD 3C HIGHWAY



EXISTING LAWN



EXPANDED BARN,
WITH STAFF PARKING



OUTDOOR PLAY
OPPORTUNITY

RELOCATED POND
OVERLOOK

CURATED MUSEUM
EXPERIENCE

EXPANDED EVENT
LAWN

CURATED MUSEUM
EXPERIENCE

RESTROOM, KIOSK,
BIKE PARKING, ADA
ENTRANCE

SANDEL PARKING LOT
(60 PARKING SPACES)

EXPANDED STONE
GARDEN