

# DEER HAVEN PARK SITE ELECTRIC IMPROVEMENTS

PREPARED FOR:  
PRESERVATION PARKS OF DELAWARE COUNTY

2656 HOGBACK ROAD  
SUNBURY, OHIO 43074

CONFORMING/BID SET  
OCTOBER 2, 2024

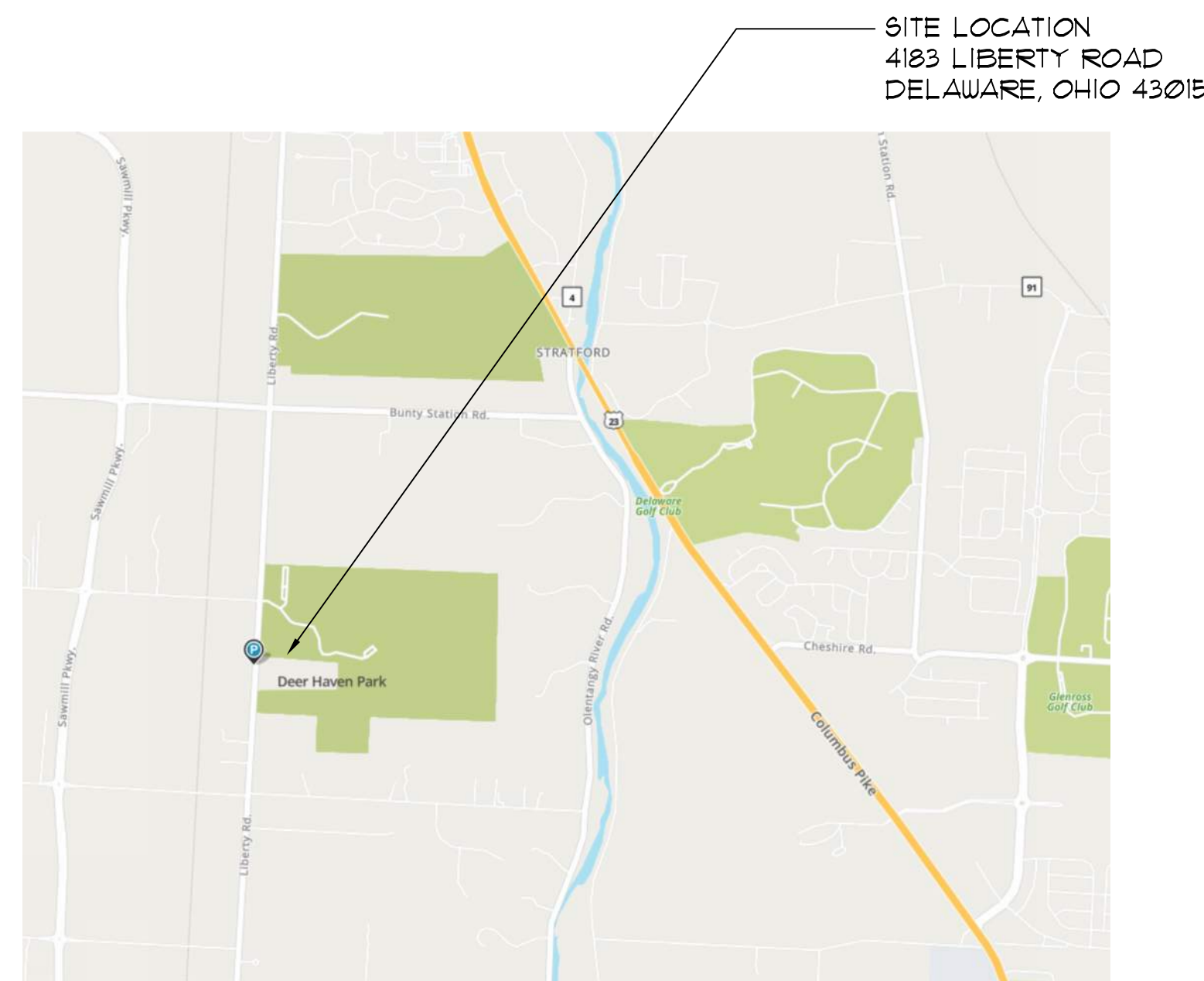


## CONSULTANT

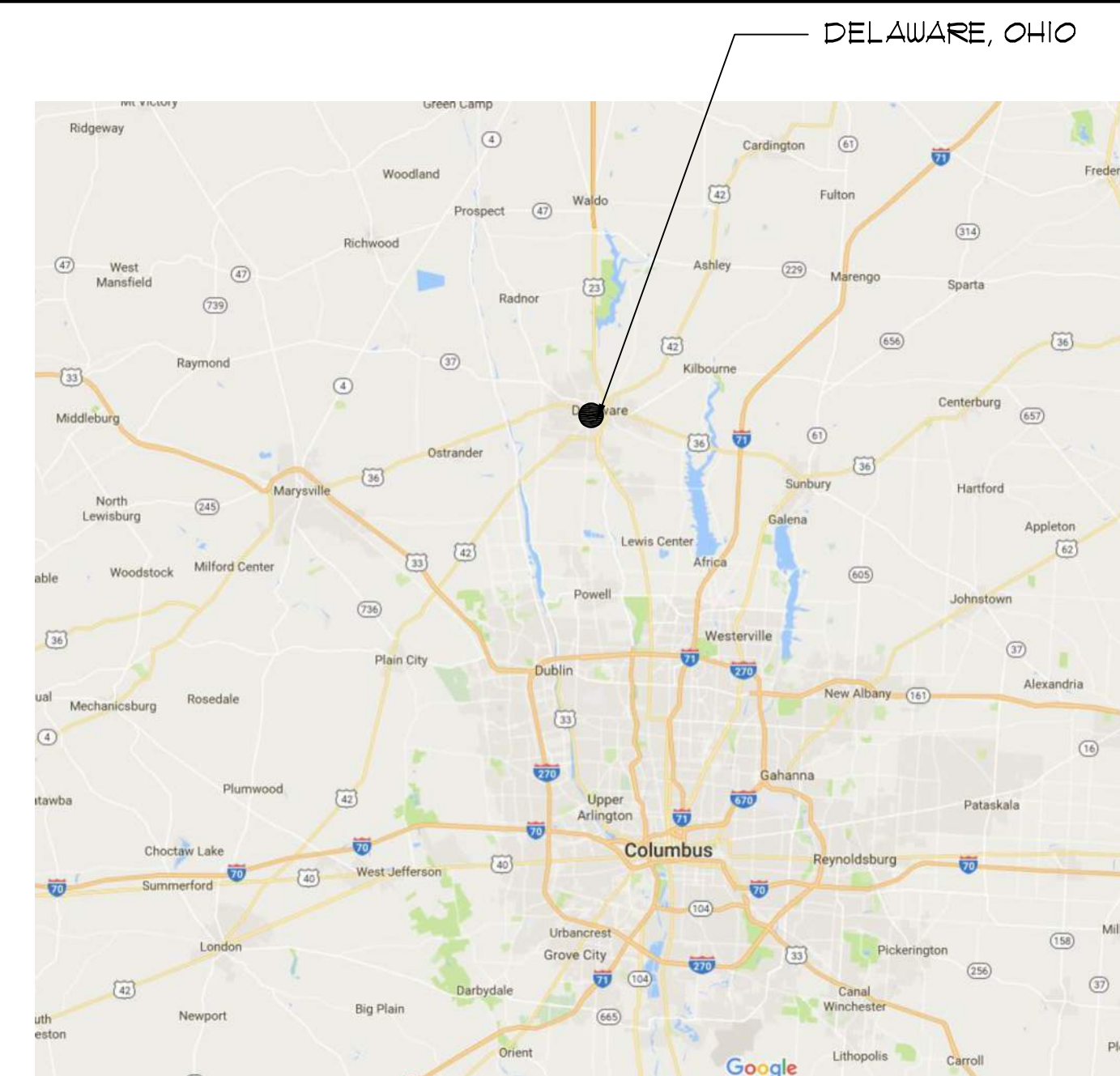
MECHANICAL / ELECTRICAL ENGINEER:  
ROGER D. FIELDS ASSOCIATES, INC  
4588 KENNY ROAD  
COLUMBUS, OHIO 43220-2111



## MAPS



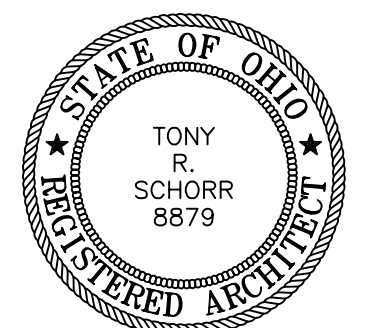
LOCATION MAP  
N.T.S.



VICINITY MAP  
N.T.S.

## DRAWING INDEX

- |     |  |
|-----|--|
|     | COVER                                    |
| SD1 | COMPOSITE SITE PLAN                      |
| SD2 | SITE DEVELOPMENT AND STAKING PLAN        |
| SD3 | KIOSK PLAN                               |
| E0  | ELECTRICAL GENERAL NOTES & ABBREVIATIONS |
| E1  | ELECTRICAL PLANS                         |
| E2  | ELECTRICAL SCHEDULES                     |
| E3  | ELECTRICAL SPECIFICATIONS                |



TONY R. SCHORR, LICENSE #8879  
EXPIRATION DATE 12/31/2025  
SIGNED: *Tony Schorr* 08/21/2024  
DATE

ARCHITECT:  
230 BRADENTON AVENUE  
DUBLIN, OHIO 43017  
(614) 798-2096 FAX (614) 798-2097



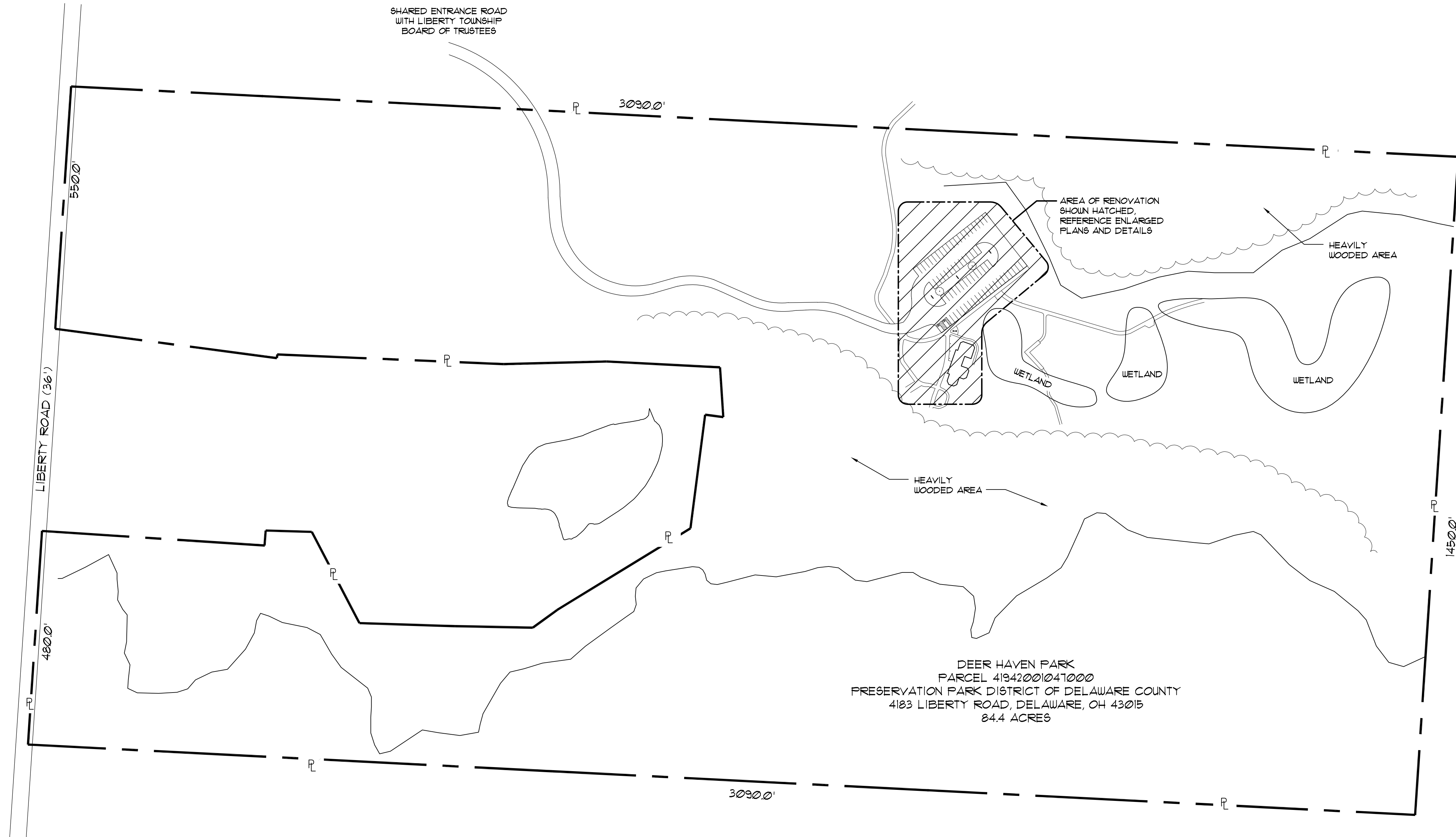


**UTILITY SERVICES INFORMATION**

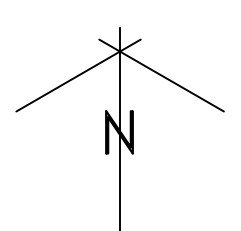
**ELECTRIC**  
 AEP ENERGY  
 P.O. BOX 340  
 ZELLENOPLE, PA 16063  
 (866) 298-3182

**EXISTING CONDITIONS & DEMOLITION NOTES:**

1. NOT USED.
2. ALL ITEMS SPECIFIED TO BE REMOVED SHALL BE COMPLETELY REMOVED AND DISPOSED OF OFFSITE TO APPROPRIATE WASTE DISPOSAL FACILITIES AT THE CONTRACTOR'S EXPENSE.
3. ALL WORK TO BE ACCOMPLISHED IN STRICT ACCORDANCE WITH ALL LOCAL ORDINANCES, CITY AND STATE.
4. NOT USED.
5. THE LOCATIONS OF ALL EXISTING UTILITIES SHOWN ON THIS PLAN HAVE BEEN PROVIDED BY PPDC AND ARE GIVEN FOR THE CONVENIENCE OF THE CONTRACTOR. THE ARCHITECT ASSUMES NO RESPONSIBILITY FOR THEIR ACCURACY. PRIOR TO THE START OF ANY DEMOLITION ACTIVITY, THE CONTRACTOR SHALL NOTIFY THE UTILITY COMPANIES FOR ONSITE LOCATIONS OF EXISTING UTILITIES.
6. IT IS THE CONTRACTOR'S RESPONSIBILITY TO CALL OUPS, OR A PRIVATE UTILITY MARKING COMPANY, PRIOR TO CONSTRUCTION, AND TO HAVE ALL EXISTING UTILITIES LOCATED & MARKED.
7. CONTRACTOR IS RESPONSIBLE FOR PROVIDING TRAFFIC CONTROL. ALL TRAFFIC CONTROL MEASURES SHALL BE IN ACCORDANCE WITH THE OHIO MANUAL OF UNIFORM TRAFFIC CONTROL DEVICES (LATEST EDITION), AND ODOT ITEM 614.
8. CONTRACTOR IS RESPONSIBLE FOR PROVIDING JOB SITE SAFETY PER OSHA REQUIREMENTS.
9. CONTRACTOR IS RESPONSIBLE FOR PLACING AND MAINTAINING CONSTRUCTION FENCE, SIGNS, ETC, TO WARN AND KEEP PEOPLE OFF SITE FOR THE DURATION OF THE PROJECT.
10. EXTENTS OF DEMOLITION WORK IS NOT LIMITED TO ONLY WHAT IS SHOWN TO BE DEMOLISHED ON THIS PLAN. DEMOLITION WORK MUST BE COMPLETE SO THE PROPOSED STRUCTURES AND APPURTENANCES CAN BE CONSTRUCTED.
11. THE REMOVAL OF STRUCTURES AND OBSTRUCTIONS SHALL BE IN ACCORDANCE WITH ODOT ITEM 202.
12. STATE AND LOCAL CODE REQUIREMENTS SHALL CONTROL THE DISPOSAL OF DEBRIS RESULTING FROM THE REMOVAL OPERATION.



1 COMPOSITE SITE PLAN  
 1" = 140'-0"



<b>COMPOSITE SITE PLAN</b>	
DEER HAVEN PARK SITE ELECTRIC IMPROVEMENTS 4183 LIBERTY ROAD DELAWARE, OH 43015  PREPARED FOR: PRESERVATION PARKS OF DELAWARE COUNTY 2656 HOGBACK ROAD SUNBURY, OHIO 43074	
<b>schorr architects inc.</b> 230 Bradenton Ave. Dublin, OH 43017 (614) 798-2096	TONY R. SCHORR 8879 REGISTERED ARCHITECT
CONFORMING/BID: 08.21.2024  BID: 07.22.2024  COMM. NO.: 2406	TONY R. SCHORR, LICENSE #8879 EXPIRATION DATE 12/31/2025 SIGNED: <i>Tom Schorr</i> 08/21/2024 DATE
SD1	



**GENERAL NOTES**

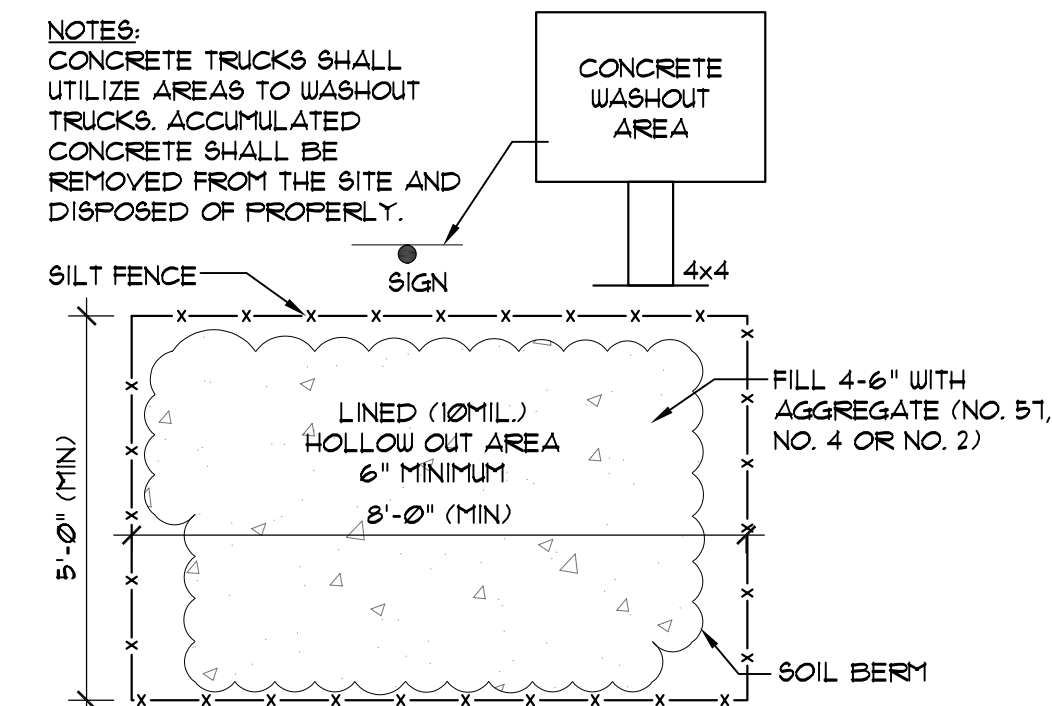
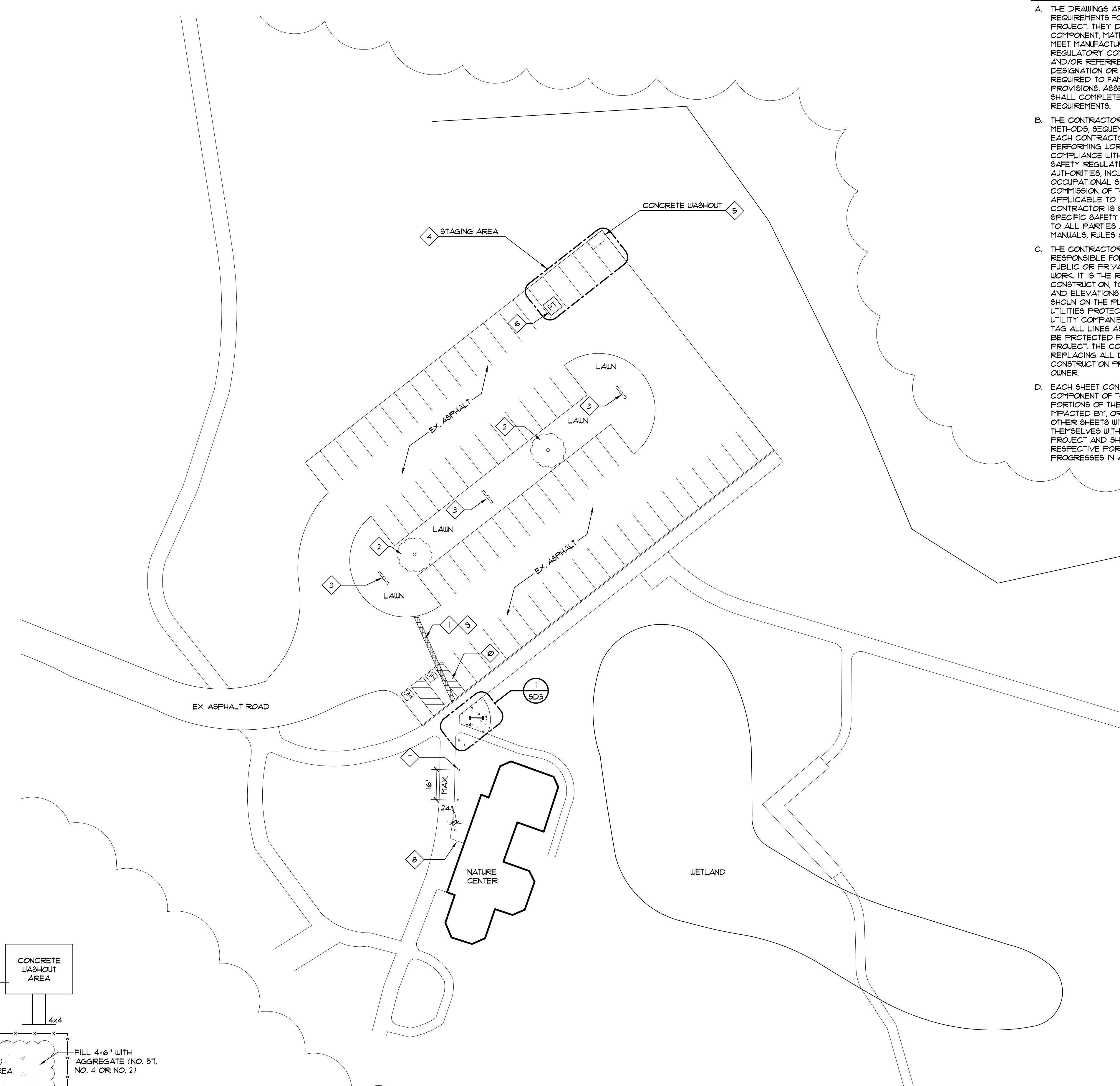
- A. THE DRAWINGS ARE INTENDED TO GRAPHICALLY DEPICT THE GENERAL REQUIREMENTS FOR THE SCOPE OF WORK REQUIRED TO COMPLETE THE PROJECT. THEY DO NOT SHOW OR IDENTIFY EACH AND EVERY COMPONENT, MATERIAL, ITEM OR INSTALLATION METHOD NECESSARY TO MEET MANUFACTURERS OR REGULATORY REQUIREMENTS. SPECIFIC REGULATORY COMPLIANCE ITEMS OR PROVISIONS ARE IDENTIFIED AND/OR REFERRED TO BY INDICATION OF THE APPROPRIATE ASSEMBLY DESIGNATION OR GENERAL TERMINOLOGY. THE CONTRACTOR SHALL BE REQUIRED TO FAMILIARIZE THEMSELVES WITH THE APPLICABLE CODE PROVISIONS, ASSEMBLY DESIGNATION OR MATERIAL, IDENTIFIED AND SHALL COMPLETE THE PROJECT IN COMPLIANCE WITH THE APPLICABLE REQUIREMENTS.
- B. THE CONTRACTORS SHALL BE SOLELY RESPONSIBLE FOR THE MEANS, METHODS, SEQUENCING AND SAFETY REQUIREMENTS FOR THE PROJECT. EACH CONTRACTOR, SUBCONTRACTOR, LABORER OR OTHER PERSONS PERFORMING WORK ON THE PROJECT SITE SHALL BE RESPONSIBLE FOR COMPLIANCE WITH ALL APPLICABLE WORKPLACE AND CONSTRUCTION SAFETY REGULATIONS PROMULGATED BY FEDERAL, STATE OR LOCAL AUTHORITIES, INCLUDING BUT NOT LIMITED TO, US DEPT. OF LABOR OCCUPATIONAL SAFETY & HEALTH ACT (OSHA), THE INDUSTRIAL COMMISSION OF THE STATE OF OHIO OR OTHER INDUSTRY REQUIREMENTS APPLICABLE TO CONSTRUCTION SITES AND SAFETY. THE GENERAL CONTRACTOR IS SOLELY RESPONSIBLE FOR ASSURING THAT SITE SPECIFIC SAFETY REQUIREMENTS ARE DOCUMENTED AND DISSEMINATED TO ALL PARTIES AND SHALL MAINTAIN ALL REQUIRED RECORDS, FORMS, MANUALS, RULES OR OTHER DOCUMENTS AT THE SITE.
- C. THE CONTRACTOR AND/OR THE APPLICABLE TRADE CONTRACTOR IS RESPONSIBLE FOR THE LOCATION OF ALL UNDERGROUND UTILITIES, PUBLIC OR PRIVATE, IN THE AREAS OF WORK PRIOR TO THE START OF WORK. IT IS THE RESPONSIBILITY OF EACH CONTRACTOR, PRIOR TO CONSTRUCTION, TO DETERMINE IN THE FIELD THE ACTUAL LOCATIONS AND ELEVATIONS OF ALL UTILITIES WITHIN THE AREA OF WORK, WHETHER SHOWN ON THE PLANS OR NOT. THE CONTRACTOR IS TO NOTIFY THE OHIO UTILITIES PROTECTION SERVICE AT 800/362-2164 AND ALL LOCAL UTILITY COMPANIES BEFORE STARTING WORK. UTILITY PERSONNEL TO TAG ALL LINES ASSOCIATED WITH THEIR SERVICE. ALL UTILITIES SHALL BE PROTECTED FROM DAMAGE DURING THE CONSTRUCTION OF THE PROJECT. THE CONTRACTOR IS RESPONSIBLE FOR REPAIRING OR REPLACING ALL DAMAGED KNOWN UTILITIES AFFECTED BY THE CONSTRUCTION PROCESS TO MATCH EXISTING AT NO COST TO THE OWNER.
- D. EACH SHEET CONTAINED IN THIS SET OF DRAWINGS IS AN INTEGRAL COMPONENT OF THE CONSTRUCTION DOCUMENTS FOR THE PROJECT. PORTIONS OF THE WORK DESCRIBED ON ONE SHEET MAY IMPACT, BE IMPACTED BY, OR RELY UPON INFORMATION OR WORK SHOWN ON THE OTHER SHEETS WITHIN DRAWINGS. EACH CONTRACTOR SHALL FAMILIARIZE THEMSELVES WITH THE SCOPE OF WORK REQUIRED FOR THE ENTIRE PROJECT AND SHALL BE RESPONSIBLE FOR COORDINATION OF THEIR RESPECTIVE PORTIONS WITH OTHER TRADES TO ASSURE THAT THE WORK PROGRESSES IN AN ORDERLY AND TIMELY FASHION.
- E. ALL WORK SHALL BE COMPLETED IN ACCORDANCE WITH THE CONSTRUCTION DOCUMENTS APPROVED BY THE AUTHORITIES HAVING JURISDICTION OVER THE PROJECT. EACH CONTRACTOR, SUBCONTRACTOR OR OTHER PERSON PERFORMING WORK ON THE PROJECT SHALL REFER TO THE APPROVED DOCUMENTS FOR THE SCOPE OF WORK REQUIRED. USE OF BID SETS, LOOSE SHEETS OR OTHER ITEMS/DOCUMENTS NOT PART OF THE APPROVED DOCUMENTS IS DONE AT THE RESPECTIVE PARTIES' SOLE RISK. THE GENERAL CONTRACTOR SHALL BE RESPONSIBLE FOR MAINTENANCE AND SAFEKEEPING OF THE APPROVED DOCUMENTS.
- F. DO NOT SCALE DRAWINGS. IF ANY DISCREPANCY IS FOUND OR ANY INFORMATION OR CLARIFICATION IS NEEDED WHICH CANNOT BE REASONABLY DETERMINED BY THE CONSTRUCTION DOCUMENTS, CONTACT THE ARCHITECT/ENGINEER FOR RESOLUTION. IN CASE OF DISCREPANCY REGARDING THE QUANTITY OR QUALITY, THE HIGHER QUALITY OR GREATER QUANTITY SHALL BE PROVIDED.
- G. REFER TO THE PROJECT GENERAL CONDITIONS OF THE CONTRACT FOR CONSTRUCTION FOR ADDITIONAL REQUIREMENTS FOR COMPLETION AND ADMINISTRATION OF THE PROJECT.
- H. CONTRACTOR IS RESPONSIBLE FOR VERIFYING EXISTING CONDITIONS PRIOR TO COMMENCEMENT OF WORK. DISCREPANCIES BETWEEN EXISTING CONDITIONS AND THE CONTRACT DOCUMENTS THAT CAUSE MINOR RELOCATIONS IN THE FIELD WILL NOT BE CAUSE FOR ADDITIONAL PAYMENT.
- I. CONTRACTOR IS TO TAKE PRECAUTIONS TO PROTECT THE EXISTING BUILDING, ITS CONTENTS, AND EXISTING SITE IMPROVEMENTS SUCH AS, ASPHALTIC PAVEMENT, LANDSCAPING, ETC. THE CONTRACTOR IS RESPONSIBLE FOR REPAIRING AND/OR REPLACING DAMAGED IMPROVEMENTS RESULTING FROM THE CONSTRUCTION PROCESS TO MATCH EXISTING AT NO COST TO THE OWNER.
- J. DURING THE CONSTRUCTION PROCESS, EACH CONTRACTOR IS TO INFORM THE ARCHITECT/ENGINEER OF ANY UNSTABLE CONDITIONS PRIOR TO PROCEEDING WITH THE WORK IN PROGRESS.
- K. CONTRACTOR SHALL DAILY CLEAN UP ALL TRASH AND DEBRIS AND PLACE IN PROPER CONTAINERS ON THE SITE DURING CONSTRUCTION WORK.
- L. CONTRACTOR JUST PRIOR TO OCCUPANCY, SHALL PROVIDE FINAL NORMAL CLEANING, INCLUDING REMOVE ACCUMULATED TRASH, POLISH GLASS, HARDWARE AND FIXTURES, VACUUM, CLEAN FLOORS, REMOVE ALL STAINS OR DIRT. THE GROUND ABOUT OR ADJACENT TO THE SITE SHALL BE LEFT RAKE CLEAN.

**CODED NOTES** INDICATED BY:

- 1. SAUCUT AND REMOVE EXISTING ASPHALT PAVEMENT AT CLOSEST PAVEMENT CRACK PATCH ASPHALT, RE: 4/SD3.
- 2. EXISTING TREE, ROUTE NEW ELECTRICAL LINES AWAY FROM ROOTS.
- 3. PROPOSED PARKING LOT LIGHTING FIXTURES, RE: 3/EI. VERIFY FINAL LOCATION WITH PARK PLANNER IN THE FIELD. TYPICAL OF (3).
- 4. CONTRACTOR STAGING/LAYDOWN AREA.
- 5. CONCRETE WASHOUT, RE: 2/SD2.
- 6. PROVIDE PORTABLE TOILET FACILITY FOR CONSTRUCTION.
- 7. PROPOSED LAWN BOLLARD LIGHTING FIXTURE. SPACE MAXIMUM 16' APART, RE: 3/EI. TYPICAL OF (4). VERIFY FINAL LOCATION WITH PARK PLANNER.
- 8. EXTEND SERVICE FROM BUILDING ADJACENT FRONT PORCH EDGE.
- 9. PROVIDE SEALER BETWEEN EDGE OF EXISTING AND ASPHALT PATCH AREAS, TYPICAL.
- 10. RESTRIPE PARKING LOT STALLS THAT WERE INVOLVED IN THE CONSTRUCTION PROCESS. MATCH EXISTING LAYOUT.

**LEGEND**

- CONCRETE CUT/PATCH
- ASPHALT CUT/PATCH
- PORTABLE TOILETS
- LAWN BOLLARD FIXTURE
- POLE MOUNTED LIGHT FIXTURE



**2** CONCRETE WASHOUT  
SCALE: N.T.S.

**1** SITE DEVELOPMENT AND STAKING PLAN  
1" = 30'-0"



**SITE DEVELOPMENT AND STAKING PLAN**

**DEER HAVEN PARK  
SITE ELECTRIC IMPROVEMENTS**

4183 LIBERTY ROAD  
DELAWARE, OH 43015  
  
PREPARED FOR:  
PRESERVATION PARKS OF DELAWARE COUNTY  
2656 HOGBACK ROAD  
SUNBURY, OHIO 43074

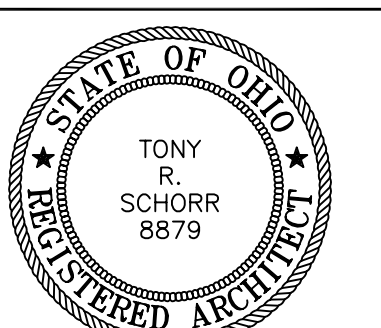
**schorr architects inc.** 230 Bradenton Ave.  
Dublin, OH 43017  
(614)798-2096

CONFORMING/BID: 08.21.2024

BID: 07.22.2024

COMM. NO.: 2406

**SD2**



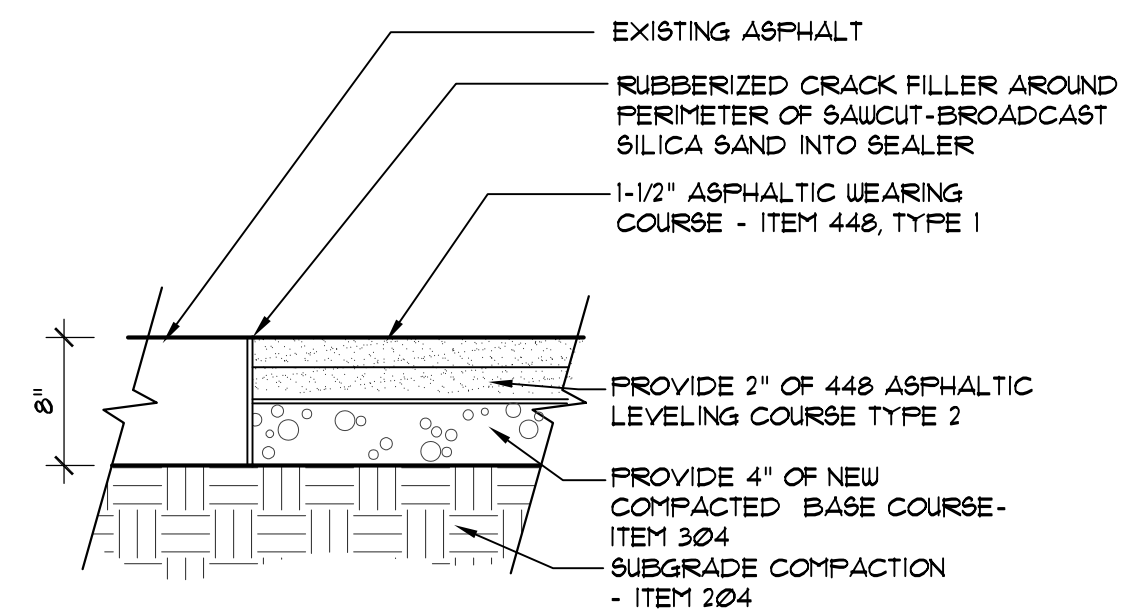
TONY R. SCHORR, LICENSE #8879  
EXPIRATION DATE 12/31/2025  
SIGNED: *Tom Schorr* 08/21/2024  
DATE



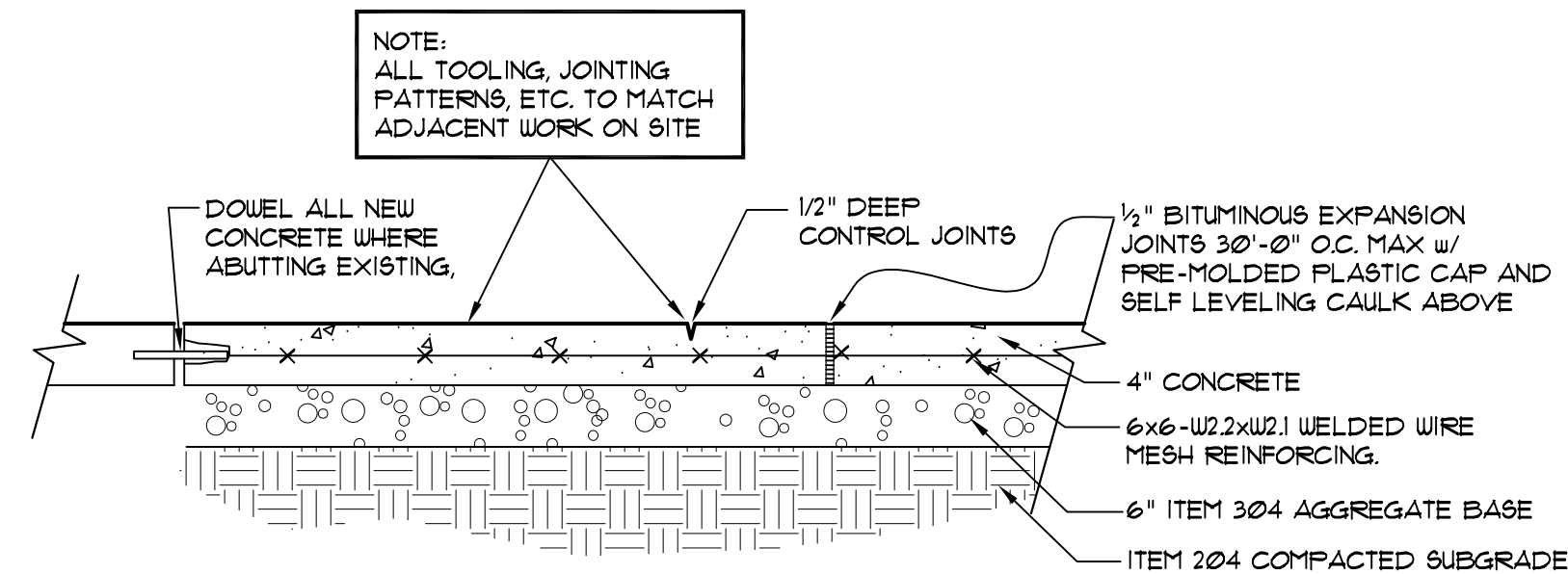
**CODED FLOOR PLAN NOTES:** INDICATED BY 

APPLICABLE TO SHEET SD3

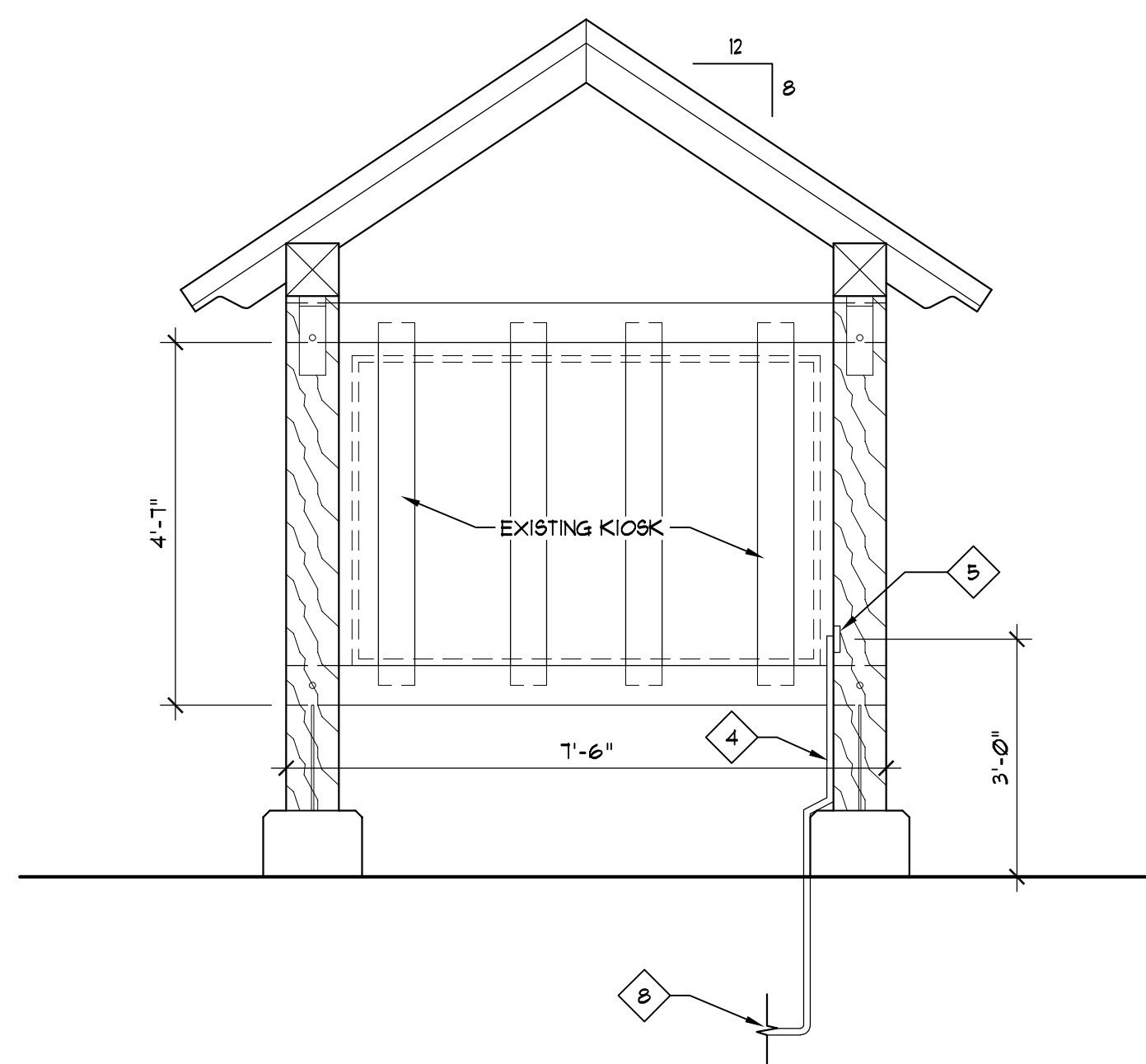
1. EXCAVATE AND REMOVE DAMAGED CONCRETE AT BASE OF KIOSK. RUN CONDUIT AND REPLACE CONCRETE AS INDICATED.
2. UNDERGROUND CONDUIT FROM LODGE TO KIOSK FOR FUTURE DIGITAL KIOSK.
3. PUSH UNDER SIDEWALK AT THIS LOCATION.
4. RISE CONDUIT UP WOOD POST AND TERMINATE IN JUNCTION BOX BETWEEN GAP IN WOOD POSTS, TYPICAL OF (?) CONDUITS AND BOXES.
5. JUNCTION BOX AND COVER PLATE.
6. UNDERGROUND ELECTRIC AND SPARE CONDUIT TO POLE MOUNTED PARKING LOT FIXTURE.
7. CUT AND PATCH ASPHALT PAVEMENT FOR SERVICE TO PARKING LOT ISLAND. REFERENCE SHEET SD2 FOR CONTINUATION.
8. REFERENCE ELECTRICAL PLAN FOR CONTINUATION AND SIZING REQUIREMENTS.
9. PROPOSED LAWN BOLLARD LIGHTING FIXTURE.
10. CONTRACTOR OPTION: THE CONTRACTOR MAY USE DIRECTIONAL BORE IN LIEU OF EXCAVATION TO AVOID CUTTING AND PATCHING ON PAVEMENT AREAS AND/OR AROUND TREES. NOTE! KIOSK CONCRETE AREA TO BE REPLACED WITH EITHER OPTION.



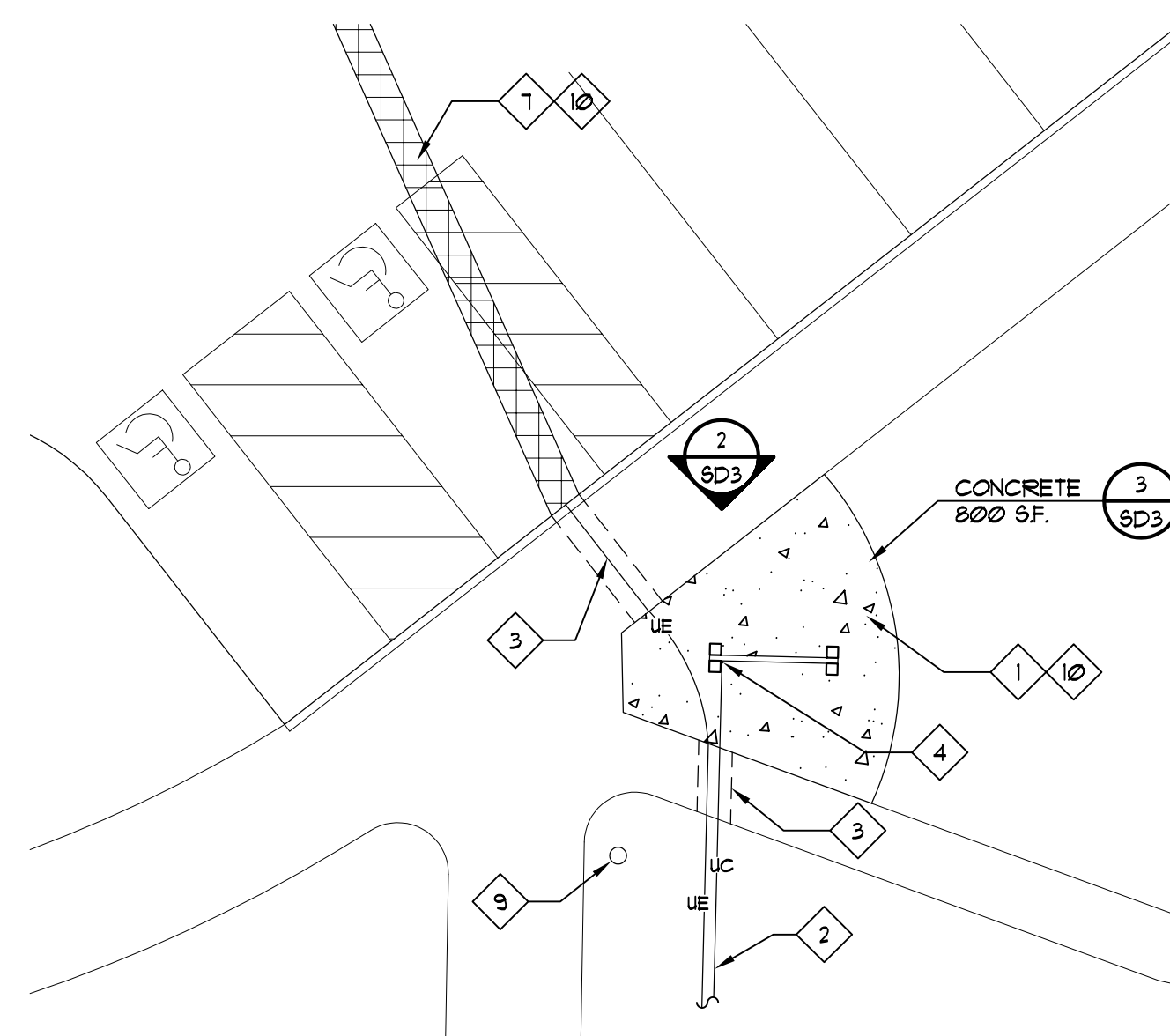
**4 ASPHALT PATCH DETAIL**  
SCALE: 1" = 1'-0"



**3 CONCRETE SIDEWALK DETAIL**  
1" = 1'-0"



**2 KIOSK ELEVATION**  
1/2" = 1'-0"



**1 ENLARGED KIOSK PLAN**  
1" = 10'-0"

**ENLARGED KIOSK PLAN AND DETAILS**

**DEER HAVEN PARK  
SITE ELECTRIC IMPROVEMENTS**  
4183 LIBERTY ROAD  
DELAWARE, OH 43015

PREPARED FOR:  
PRESERVATION PARKS OF DELAWARE COUNTY  
2656 HOGBACK ROAD  
SUNBURY, OHIO 43074

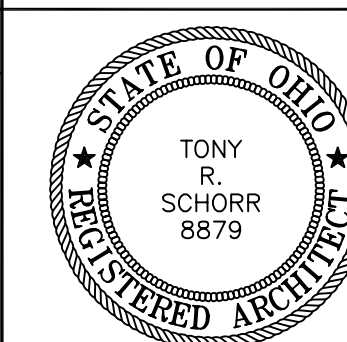
**schorr architects inc.** 230 Bradenton Ave.  
Dublin, OH 43017  
(614) 798-2096

CONFORMING/BID: 08.21.2024

BID: 07.22.2024

COMM. NO.: 2406

**SD3**



TONY R. SCHORR, LICENSE #8879  
EXPIRATION DATE 12/31/2025  
SIGNED: *Tom Schorr* 08/21/2024 DATE

GENERAL ABBREVIATIONS

A.	COMPRESSED AIRAB. ABOVE	G	GAS	SPEC.	SPECIFICATION
A.D.	ACCESS DOOR	G.C.	GALVANIZED	SQ.	SQUARE
A.D.	AREA DRAIN	G.C.	GENERAL CONTRACTOR	SQ.FT.	SQUARE FEET
A.F.F.	ABOVE FINISHED FLOOR	GEN.	GENERAL	S & R	SUPPLY & RETURN
AH	AIR HANDLER	G.I.	GREASE INTERCEPTOR	S.S.	SERVICE SINK
ALT.	ALTERNATE	GPM	GALLONS PER MINUTE	S.S.	STORM SEWER
ALUM.	ALUMINUM	GR	GRILLE	S.S., S/S	STAINLESS STEEL
A.P.	ACCESS PANEL	GRAV.	GRAVITY	ST	SOUND TRAP
APPROX.	APPROXIMATELY	G.T.C.	GENERAL TRADES CONTRACTOR	STAT	THERMOSTAT
ARCH.	ARCHITECT	HJHT.	HEIGHT	STD.	STANDARD
ARRT.	ARRANGEMENT	HAC	HEATING AND AIR CONDITIONING	STL.	STEEL
AUTO.	AUTOMATIC	HB	HOSE BIBB	STM.	STORM
AV	ACID VENT	HORIZ.	HORIZONTAL	SUCT./S	SUCTION
AT	AT	HP	HIGH PRESSURE	SW.	SWITCH
AW	ACID WASTE	HP	HORSEPOWER	SW	SOFTENED WATER
&	AND	HPS	HIGH PRESSURE STEAM	TD	TEMPERATURE DIFFERENCE
∠	ANGLE	H.S.	HAIR STRAINER	TEMP.	TEMPERATURE
BAL.	BALANCING	HTG.	HEATING	THERM.	THERMOMETER/ THERMOSTAT
B.D.D.	BACKDRAFT DAMPER	HTR.	HEATER	T*STAT	THERMOSTAT
BFP	BACKFLOW PREVENTER	HV	HEATING & VENTILATING	T.W.	TEMPERED WATER
BHP	BRAKE HORSEPOWER	HV	HIGH VELOCITY	TYP.	TYPICAL
BLDG.	BUILDING	HVAC	HEATING, VENTILATING AND AIR CONDITIONING	UC	UNDERCUT
BSBD, RAD.	BASEBOARD RADIATION	H*STAT	HUMIDISTAT	UH	UNIT HEATER
BSMT.	BASEMENT	LD.	INSIDE DIAMETER	UR	URINAL
B.T.	BATH TUB	IN.	INSIDE	UV	UNIT VENTILATOR
B.T.	BLACKTOP	IND.	INDIRECT	V.	VENT
BTM.	BOTTOM	IND. U.	INDUCTION UNIT	VAC.	VACUUM
BTU	BRITISH THERMAL UNIT	INV.	INVERT	VC	VACUUM CLEANING
B.V.	BACKWATER VALVE	INV. ELEV.	INVERT ELEVATION	VCP	VITRIFIED CLAY PIPE
CAB.	CABINET	INSUL.	INSULATION	VERT.	VERTICAL
CAP.	CAPACITY	INT.	INTERIOR	VIB. ISO.	VIBRATION ISOLATOR
C.B.	CATCH BASIN	J.R.	JANITOR'S RECEPTOR	VSP	VITRIFIED SEWER PIPE
C.C.	CENTER TO CENTER	K.E.C.	KITCHEN EQUIPMENT CONTRACTOR	V.T.R.	VENT THRU ROOF
CEIL./CLG.	CEILING	L.	LENGTH	W.	WIDTH OR WATER
CFH	CUBIC FEET PER HOUR	LAB	LABORATORY	W/	WITH
CFM	CUBIC FEET PER MINUTE	L.A.T.	LEAVING AIR TEMPERATURE	WAT.	WATER
CHEM.	CHEMICAL	LAV	LAVATORY	WB	WET BULB
C.I.	CAST IRON	LH	LEFT HAND	WC	WATER CLOSET
CL	CENTERLINE	LPS	LOW PRESSURE STEAM	W.G.	WATER GAUGE
C.O.	CLEANOUT	LVG.	LEAVING	WH	WALL HYDRANT
COL.	COLUMN	L.W.T.	LEAVING WATER TEMP.	WH	WATER HEATER
COMB.	COMBINATION	M.A.	MIXED AIR	WO	WITHOUT
CONC.	CONCRETE	MAN. DPR.	MANUAL DAMPER	WW	WALL TO WALL
COND.	CONDENSATE/CONDENSER	WAT.	WATER	XFMR	TRANSFORMER
CONN.	CONNECTION/CONNECT	MAX.	MAXIMUM	YD.	YARD
CONST.	CONSTRUCTION	MBH	THOUSAND BTU PER HOUR	YH	YARD HYDRANT
CONTR.	CONTRACTOR	MECH.	MECHANICAL		
CONV.	CONVECTOR/CONVERTER	MET/MTL.	METAL		
COORD.	COORDINATE	MEZZ.	MEZZANINE		
CUH	CABINET UNIT HEATER	MFR.	MANUFACTURER		
CJ. FT.	CUBIC FEET	MH	MANHOLE		
D.	DEEP	MIN.	MINIMUM		
DB	DRY BULB	MISC.	MISCELLANEOUS		
DBL	DOUBLE	M.O.	MOTOR OPERATED		
DCW	DOMESTIC COLD WATER	MPS	MEDIUM PRESSURE STEAM		
DET.	DETAIL	MS	MOTOR STARTER		
DEG. F.	DEGREES FARENHEIT	MTD./MT.	MOUNTED/MOUNT		
D.F.	DRINKING FOUNTAIN	N <sub>2</sub>	NITROGEN		
DHW	DOMESTIC HOT WATER	N.I.C.	NOT IN CONTRACT		
DHWR	DOM. HOT WATER RETURN	NO./#	NUMBER		
DIA. OR Ø	DIAMETER	NOM.	NOMINAL		
DIFF.	DIFFUSER	N.T.S.	NOT TO SCALE		
DIM.	DIMENSION	N-O	NITROUS OXIDE		
DISCH.	DISCHARGE	O.	OXYGEN		
D.L.	DOOR LOUVER	O.A.	OUTSIDE AIR		
D.M.	DAMPER MOTOR	O/C	ON CENTER		
DN.	DOWN	O.D.	OUTSIDE DIAMETER		
DPR.	DAMPER	O.I.	OIL INTERCEPTOR		
DR.	DOOR	OPG.	OPENING		
D.S.	DOWNSPOUT	OPP.	OPPOSITE		
DW	DISTILLED WATER	OU./OZ.	OUNCE		
DWH	DOMESTIC WATER HEATER	O.V.	OUTLET VELOCITY		
DWV	DRAIN, WASTE AND VENT	P.	PROPANE		
DWG.	DRAWING	P.	PLUMBING CONTRACTOR		
EA.	EACH	P.D.	PRESSURE DROP		
E.A.T.	ENTERING AIR TEMPERATURE	P.I.V.	POST INDICATOR VALVE		
E.C.	ELECTRICAL CONTRACTOR	P/L	PROPERTY LINE		
EFF.	EFFICIENCY	PLBG.	PLUMBING		
ELEC.	ELECTRIC, ELECTRICAL	PNEU.	PNEUMATIC		
ELEM.	ELEMENT	PRESS.	PRESSURE		
ELEV.	ELEVATION	PRV	PRESSURE REDUCING VALVE		
EMERG.	EMERGENCY	PROP.	PROPELLER		
ENGR.	ENGINEER	PSI	POUNDS PER SQUARE INCH		
ENT.	ENTERING	PSIG	POUNDS PER SQUARE INCH GAUGE		
EQUIP.	EQUIPMENT	PSF	POUNDS PER SQUARE FOOT		
E.S.P.	EXTERNAL STATIC PRESSURE	PT	PLASTER TRAP		
E.T.	EXPANSION TANK	R	REGISTER		
EW	EYE WASH	R.A.	RETURN AIR		
EWC	ELECTRIC WATER COOLER	RAD.	RADIUS/RADIATION/RADIATOR		
E.W.T.	ENTERING WATER TEMP.	R.D.	ROOF DRAIN		
EXH	EXHAUST	RECIRC.	RECIRCULATING		
EXIST.	EXISTING	REG.	REGISTER		
EXT.	EXTERIOR	REINF.	REINFORCED		
F.	FAN	REL	RELIEF		
F.	FIRE	REQ'D.	REQUIRED		
FD	FLOOR DRAIN	RH	RIGHT HAND		
F.D.	FIRE DAMPER	RHC	REHEAT COIL		
F.E.	FIRE EXTINGUISHER	RM.	ROOM		
F.E.C.	FIRE EXTINGUISHER CABINET	RPM	REVOLUTIONS PER MINUTE		
F.S.E.C.	FOOD SERVICE EQUIPMENT CONTRACTOR	RWC	RAINWATER CONDUCTOR		
F.H.	FIRE HYDRANT	RW	RAW WATER		
F.H.C.	FIRE HOSE CABINET	R/W	RIGHT OF WAY		
F.H.E.C.	FIRE HOSE/EXTINGUISHER CABINET	S.	SINK		
FIG.	FIGURE	S.A.	SHOCK ABSORBER		
FIN.	FINISH	S.A.	SUPPLY AIR		
FIN. RAD.	FINNED RADIATION	SAN.	SANITARY SEWER		
FLEX.	FLEXIBLE	SB	SHAMPOO BOWL		
FLR./FL.	FLOOR	SD	SMOKE DETECTOR		
FPM	FEET PER MINUTE	SD	SHOWER DRAIN		
F & T	FLOAT & THERMOSTATIC	S. DPR.	SMOKE DAMPER		
FT.	FEET	SECT.	SECTION		
FT. HD.	FEET OF HEAD	S.F.	SQUARE FEET		
FOR	FUEL OIL RETURN	SHR.	SHOWER		
FOS	FUEL OIL SUPPLY	SHT.	SHEET		
FPC	FIRE PROTECTION CONTRACTOR	SHT. MTL.	SHEET METAL		
FURN.	FURNISHED	S.M., S/M	SHEET METAL		
F.V.	FLUSH VALVE	S.P.	STATIC PRESSURE		

ELECTRICAL SYMBOLS

1. ALL SYMBOLS NOT NECESSARILY USED.  
 2. MOUNTING HEIGHT (M.H.) IS TO CENTERLINE OF DEVICE.  
 3. MOUNTING HEIGHT ON PLAN SUPERSEDES THIS SCHEDULE.  
 4. RTD. REFER TO DRAWING.  
 5. ADJUST MOUNTING HEIGHTS OF DEVICES WHICH PROTRUDE MORE THAN 4" INTO CORRIDORS AND WALKWAYS AS NECESSARY TO MEET A.D.A. CLEARANCE REQUIREMENTS.

SYMBOL	ITEM	M.H.	SYMBOL	ITEM	M.H.
	SURFACE MOUNTED LIGHTING FIXTURE			FIRE ALARM CONTROL PANEL	TOP @ 60"
	RECESSED MOUNTED LIGHTING FIXTURE			FIRE ALARM ANNUNCIATOR	TOP @ 60"
	LIGHTING ON EMERGENCY CIRCUIT			EMERGENCY GENERATOR ANNUNCIATOR	TOP @ 48"
	CEILING MOUNTED FIXTURE			AUDIOVISUAL ALARM BELL	80"
	LIGHTING ON EMERGENCY CIRCUIT			VISUAL ALARM STROBE	80"
	WALL MOUNTED FIXTURE	RTD		DUCT SMOKE DETECTOR	
	SINGLE FACE EXIT LIGHT W/DIRECTION ARROW			CEILING SMOKE DETECTOR	
	DOUBLE FACE EXIT LIGHT W/DIRECTION ARROWS			CEILING SMOKE DETECTOR W/ SOUNDER BASE	
	SWITCH, 3-WAY, 4-WAY, KEY, PILOT	48"		HEAT DETECTOR	
	SWITCH, LOW VOLTAGE	48"		MAGNETIC DOOR HOLD-OPEN DEVICE	RTD
	PUSHBUTTON SWITCH	48"		WATER FLOW SWITCH	
	SWITCHED LOADS, WIRING & CONDUIT			SUPERVISORY SWITCH	
	PUSHBUTTON SWITCH	48"		PRESSURE SWITCH	
	WALL DIMMER, 3-WAY	48"		TAMPER SWITCH	
	LOW VOLTAGE WALL DIMMER	48"		FIRE ALARM SYSTEM CONDUIT	
	DUPLEX RECEPT., QUADRUPLEX	18"		TV OUTLET	18"
	SINGLE RECEPT.	18"		TV SYSTEM CONDUIT	
	LIGHT OR DEVICE ON EMERG. CIRCUIT			CLOCK OUTLET	80"
	FLOOR RECEPT., FLOOR TELEPHONE OUTLET			CLOCK	80"
	TELEPHONE OUTLET	18"		CLOCK SYSTEM CONDUIT	
	TELEPHONEDATA OUTLET	18"		INTERCOM MASTER	RTD
	DATA OUTLET	18"		INTERCOM STAFF STATION	48"
	TELEPHONE CONDUIT			REMOTE INTERCOM	48"
	30 AMP, 208V. OUTLET	18"		INTERCOM SYSTEM CONDUIT	
	SPECIAL POWER OUTLET	18"		CEILING SPEAKER	
	JUNCTION BOX	RTD		TRUMPET SPEAKER	80"
	SINGLE-PHASE MOTOR			CEILING SOUND REINFORCEMENT SPEAKER	80"
	THREE-PHASE MOTOR			WALL SOUND REINFORCEMENT SPEAKER	80"
	MAGNETIC STARTER			VOLUME CONTROL	48"
	COMBINATION STARTER/DISCONNECT SWITCH			HORN SPEAKER	80"
	NON-FUSED DISCONNECT SWITCH			MICROPHONE JACK	RTD
	FUSED DISCONNECT SWITCH (80A FUSES)			BUZZER	80"
	SPEED CONTROLLER	48"		LOW VOLTAGE TRANSFORMER	RTD
	ELECTRIC THERMOSTAT	48"		SOUND SYSTEM CONDUIT	
	PANELBOARD	TOP @ 72"		PROGRAM BELL	80"
	WIRING ABOVE CEILING OR IN JOIST SPACE			WEATHERPROOF	
	WIRING UNDER FLOOR OR IN WALL			CCT	
	HOME RUN TO PANEL 'A', 2-POLE BRKR.			GFI	
	EMERGENCY CIRCUIT			BEDSIDE STATION (SINGLE, DUAL)	60"
	MANUAL FIRE ALARM PULL STATION	48"		EMERGENCY STAFF STATIONS	48"
	AUDIO ALARM HORN	80"		NURSE'S CALL ANNUNCIATOR	
	CEILING SMOKE DET. W/ SOUNDER BASE			NURSE'S CALL SYSTEM CONDUIT	
	AUDIOVISUAL ALARM HORN/STROBE	80"		EXISTING LIGHT, DEVICE OR SWITCH	
	AUDIOVISUAL ALARM SPEAKER/STROBE	80"		RELOCATED EXISTING DEVICE	
	AUDIO ALARM BELL	80"		EXISTING WIRING TO REMAIN	
	CONTACTOR 'C'			ITEM TO BE REMOVED	
	SECURITY MOTION DETECTOR	84"		TIME CLOCK	
	SECURITY DOOR SWITCH			BLANK OUTLET BOX	RTD
	SECURITY WINDOW SWITCH			CONNECT TO EXISTING	
	ELECTRIC LOCK			SECURITY GLASS BREAK	
	REMOTE DOOR RELEASE	48"		SECURITY SIREN	80"
	CARD READER	48"		PHOTOCELL	
	CCTV CAMERA	RTD		OCCUPANCY/VACANCY SENSOR (WALL)	
	ALARM STROBE/BEACON	80"		OCCUPANCY/VACANCY SENSOR (CEILING)	
	ISOLATED GROUND RECEPTACLE	18"		DIMMING VACANCY SENSOR	
				AUXILIARY WALL PANEL	80"

ELECTRICAL SHEET INDEX

E0	ELECTRICAL GENERAL NOTES, ABBREVIATIONS, AND SYMBOLS
E1	ELECTRICAL PLANS
E2	ELECTRICAL SCHEDULES
E3	ELECTRICAL SPECIFICATIONS

ELECTRICAL GENERAL NOTES (APPLIES TO ALL SHEETS)

- ALL BRANCH CIRCUIT WIRING SHALL BE RUN ABOVE CEILING OR IN WALL. NO UNDERFLOOR CONDUIT IS PERMITTED, UNLESS NOTED OTHERWISE.
- ALL NEW ELECTRICAL WORK SHALL BE CONCEALED FROM VIEW (IN FINISHED AREAS). ANY CONDUIT THAT MUST BE VISIBLE SHALL BE COORDINATED AND APPROVED BY ARCHITECT PRIOR TO ROUGH-IN.
- ALL BRANCH CIRCUIT WIRING SHALL BE 2-#12 CU, 1-#12 CU GRD. IN 3/4" CONDUIT UNLESS NOTED OTHERWISE. CONTRACTOR SHALL UPSIZE WIRE ACCORDINGLY FOR 3% VOLTAGE DROP MAXIMUM WHERE NECESSARY.
- MAKE ALL FINAL CONNECTIONS TO ALL EQUIPMENT (INCLUDING EQUIPMENT PROVIDED BY OTHERS) FOR COMPLETE, FULLY OPERATING SYSTEM.
- DISCONNECT AND REMOVE ALL EXISTING WIRING AND CONDUIT NO LONGER BEING USED.
- ALL LOW VOLTAGE CABLING IN PLENUM RATED CEILING SHALL BE RATED FOR USE IN PLENUM RATED ASSEMBLIES.

ELECTRICAL GENERAL NOTES, ABBREVIATIONS, AND SYMBOLS

DEER HAVEN PARK  
 SITE ELECTRIC IMPROVEMENTS  
 4183 LIBERTY ROAD  
 DELAWARE, OH 43015

PREPARED FOR:  
 PRESERVATION PARKS OF DELAWARE COUNTY  
 2656 HOGBACK ROAD  
 SUNBURY, OHIO 43074

**schorr architects inc.** 230 Bradenton Ave.  
 Dublin, OH 43017  
 (614)798-2096

Conforming / Bid: 08.21.2024

COMM. NO.: 2406

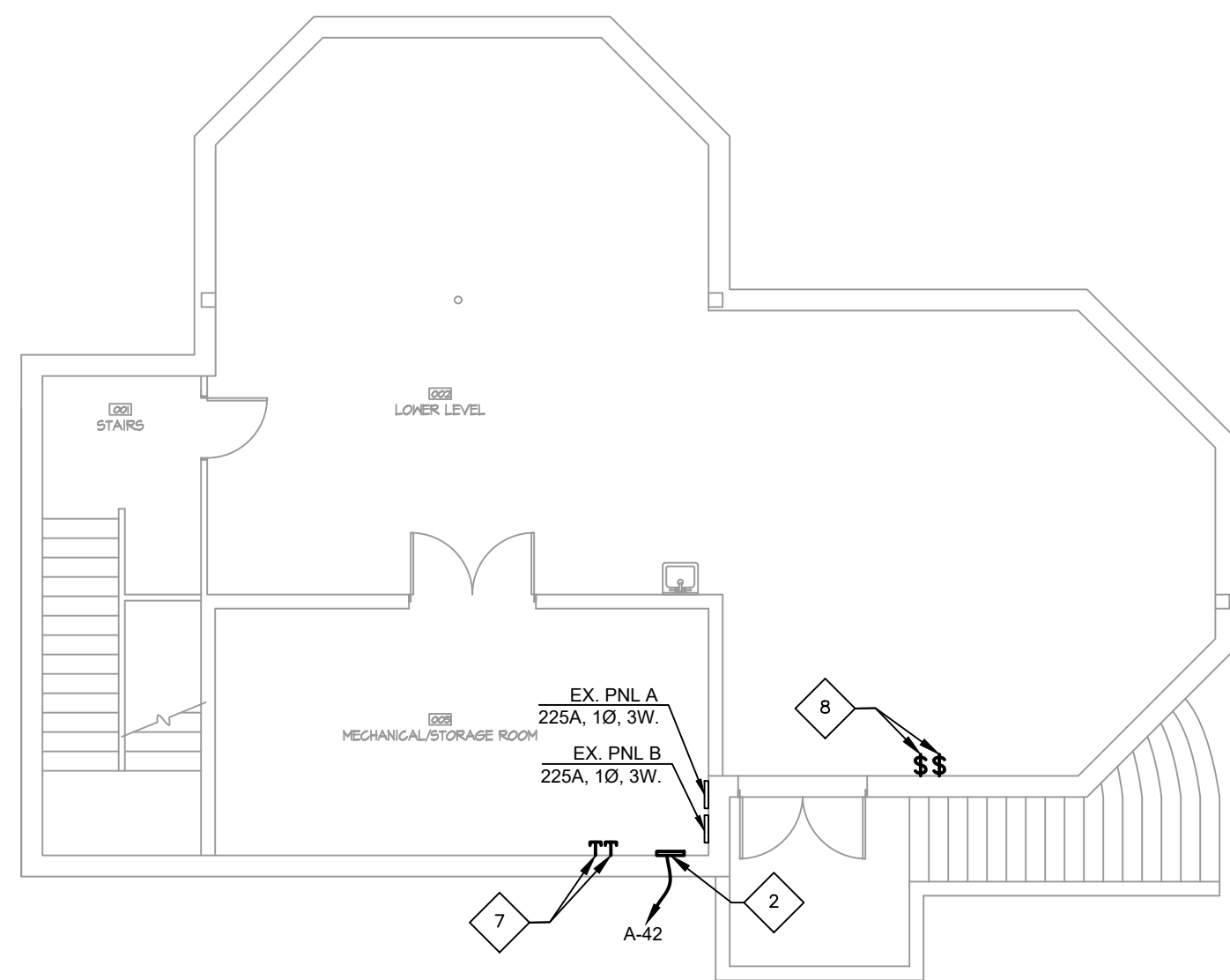
ROGER D. FIELDS ASSOCIATES, INC.  
 4588 Kenny Road  
 Columbus, Ohio 43220  
 (614) 451-2248  
 www.rdfa.com  
 Project #: 24002



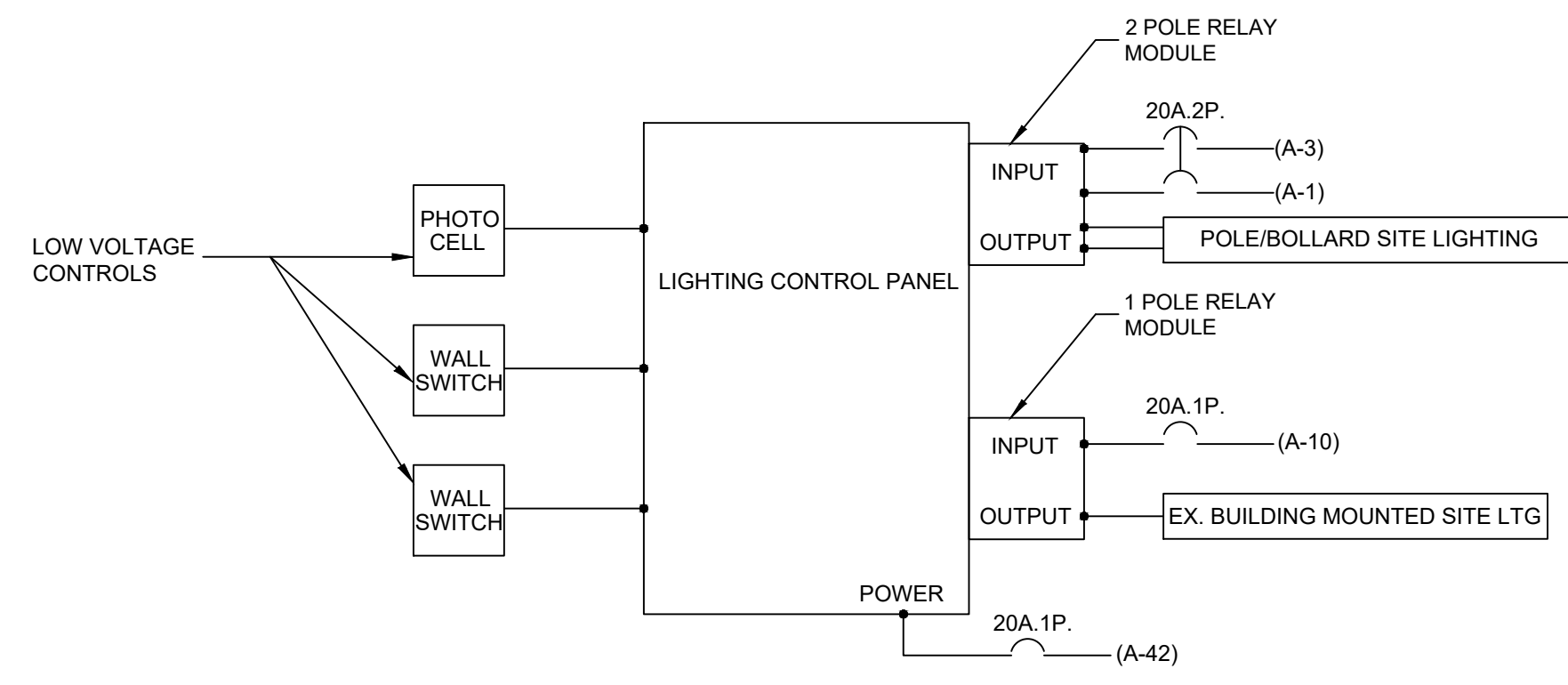
Designer: LH

EO

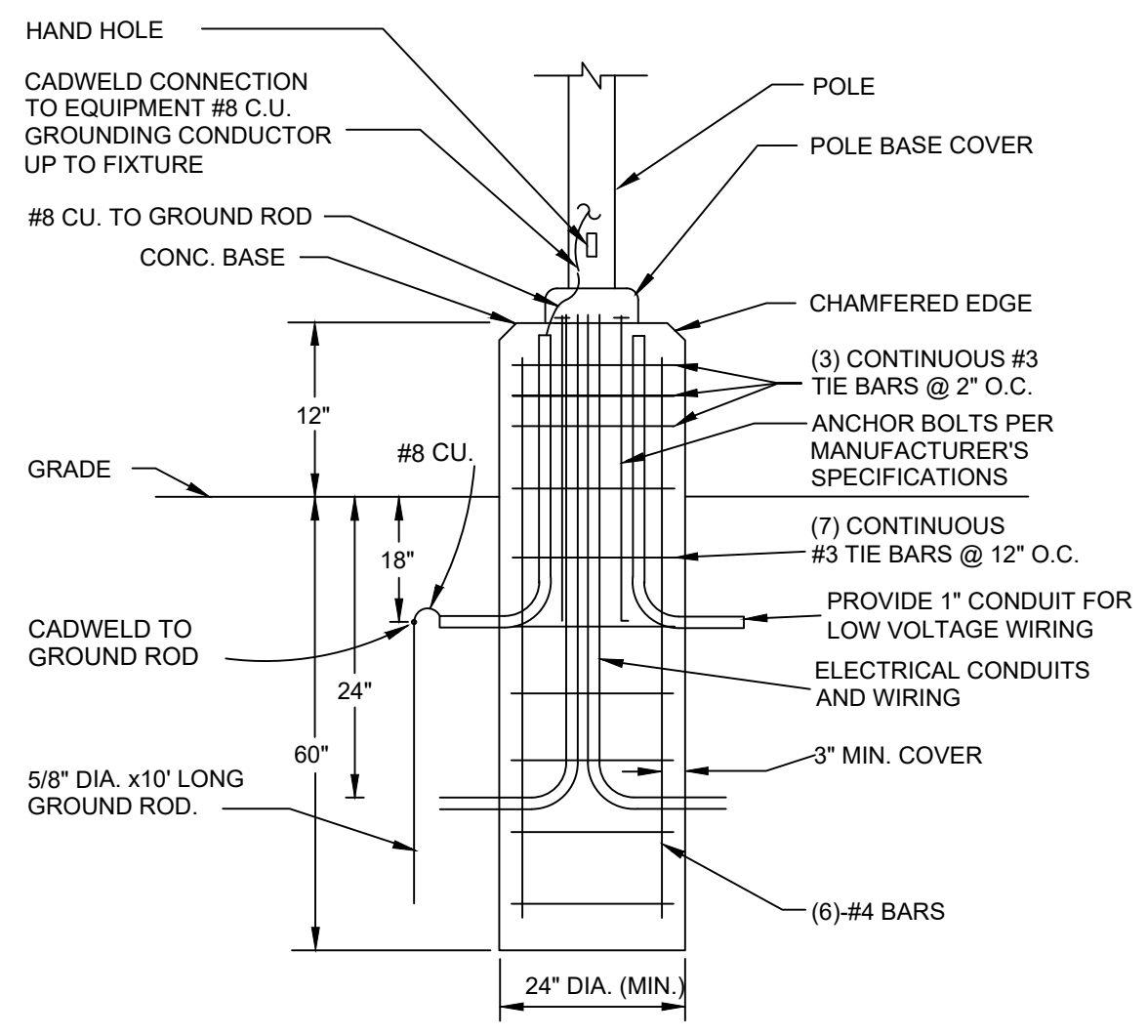




**1** NATURE CENTER BASEMENT ELECTRICAL PLAN  
1/8"=1'-0"



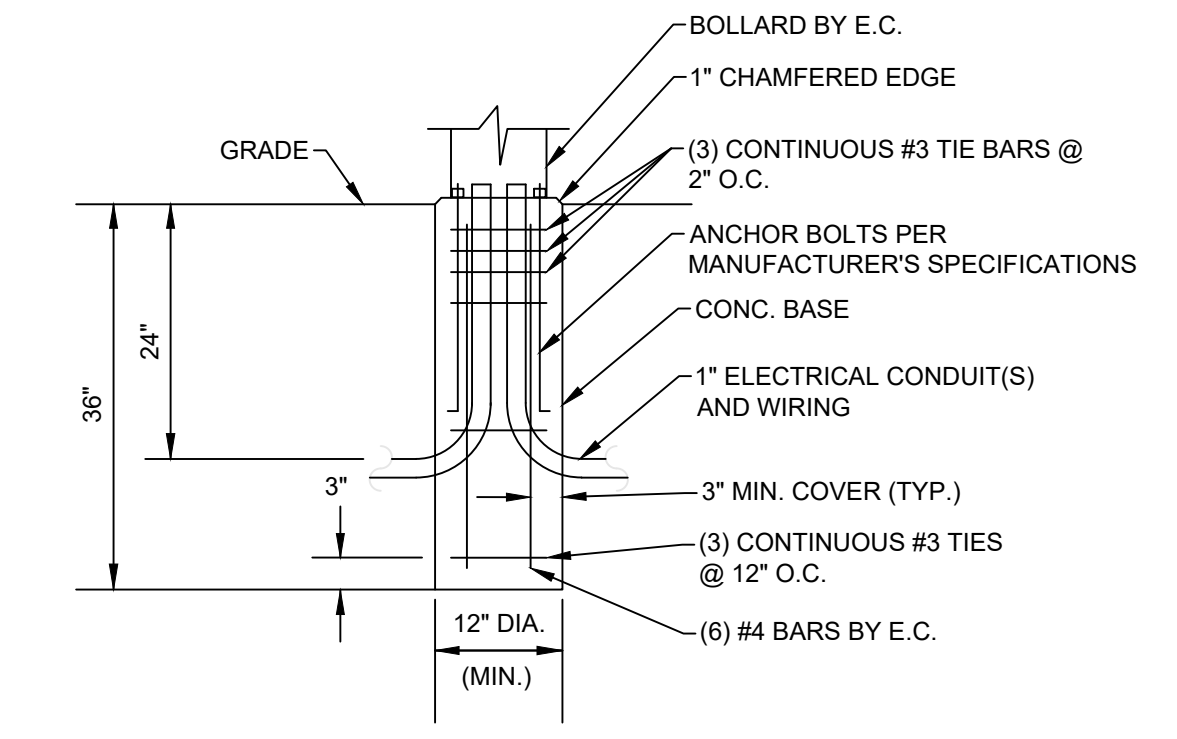
**4** TYPICAL LIGHTING CONTROL PANEL SCHEMATIC  
N.T.S.



**3** TYPICAL POLE BASE SCHEMATIC  
N.T.S.



**2** ELECTRICAL SITE PLAN  
1" = 30'



**5** TYPICAL BOLLARD BASE SCHEMATIC  
N.T.S.

- ELECTRICAL CODED NOTES**
- EXISTING PHOTOCELL TO BE REMOVED. PROVIDE NEW PHOTOCELL THAT IS COMPATIBLE WITH NEW LIGHTING CONTROL PANEL IN SAME LOCATION.
  - PROVIDE LIGHTING CONTROL PANEL. COORDINATE EXACT LOCATION WITH PRESERVATION PARKS PRIOR TO INSTALLATION. LIGHTING CONTROL PANEL TO BE WATTSTOPPER LCB PANEL OR APPROVED EQUAL BY LEVITON.
  - PROVIDE (2) #8, (1) #10 G., IN 1" C. REFER TO ARCHITECTURAL SHEET SD2 "SITE DEVELOPMENT AND STAKING PLAN" FOR EXACT ROUTING OF CONDUIT.
  - PROVIDE 1" C. WITH PULLWIRE FOR FUTURE SECURITY CAMERAS. REFER TO ARCHITECTURAL SHEET SD2 "SITE DEVELOPMENT AND STAKING PLAN" FOR EXACT ROUTING OF CONDUIT.
  - FOR FUTURE DIGITAL KIOSK PROVIDE (2) #8, (1) #10 G., IN 1" C. SEE ARCHITECTURAL SHEET SD3 "ENLARGED KIOSK PLAN AND DETAILS" FOR EXACT WEATHERPROOF JUNCTION BOX LOCATION.
  - PROVIDE 1" CONDUIT WITH PULLWIRE FOR DATA FOR FUTURE DIGITAL KIOSK. TERMINATE IN WEATHERPROOF JUNCTION BOX MOUNTED TO EXISTING KIOSK. SEE ARCHITECTURAL SHEET SD3 "ENLARGED KIOSK PLAN AND DETAILS" FOR EXACT LOCATION.
  - LOCATION OF STUBBED 1" CONDUIT FOR DATA FOR FUTURE DIGITAL KIOSK AND FUTURE SECURITY CAMERAS.
  - PROVIDE (2) LOW VOLTAGE MANUAL OVERRIDE SWITCHES FOR EXTERIOR LIGHTING. ONE SWITCH TO CONTROL BOLLARDS AND POLE MOUNTED FIXTURES. ONE SWITCH TO CONTROL BUILDING MOUNTED LIGHTING. LOCATE SWITCHES ON FIRST FLOOR NEAR FRONT DESK / ADMIN AREA. COORDINATE EXACT LOCATION OF SWITCHES WITH PRESERVATION PARKS PRIOR TO INSTALLATION.

**ELECTRICAL PLANS**

**DEER HAVEN PARK  
SITE ELECTRIC IMPROVEMENTS**  
4183 LIBERTY ROAD  
DELAWARE, OH 43015

PREPARED FOR:  
PRESERVATION PARKS OF DELAWARE COUNTY  
2656 HOGBACK ROAD  
SUNBURY, OHIO 43074

**schorr architects inc.** 230 Bradenton Ave.  
Dublin, OH 43017  
(614)798-2096

Conforming / Bid: 08.21.2024

COMM. NO.: 2406

**E1**

STATE OF OHIO  
G. C. TOPP  
51988  
J. B. [Signature]  
K. SAHN  
59142  
REGISTERED PROFESSIONAL ENGINEER

ROGER D. FIELDS ASSOCIATES, INC.  
4588 Kenny Road  
Columbus, Ohio 43220  
(614) 451-2248  
www.rdfa.com  
Project #: 24002

**RFA**  
Designer: LH



LIGHTING FIXTURE SCHEDULE						
NOTE: FIXTURE NUMBER, LETTER PREFIX INDICATES TYPE OF MOUNTING AS FOLLOWS: CH-CHAIN HUNG; CL-CEILING MOUNTED; S-STEM SUSPENDED; W-WALL MOUNTED; R-CEILING RECESSED; WR-WALL RECESSED; CV-COVE MOUNTED; UC-UNDER CABINET; RF-ROOF MOUNTED; P-POST OR POLE; GR-GROUND MOUNTED; H-MOUNTED IN HOOD; B-BOLLARD						
FIXTURE TYPE	MANUFACTURER	CATALOG NO./MODEL NO.	WATTAGE/TYPE	COLOR TEMP./LUMENS	FINISH	DESCRIPTION
P1	LITHONIA OR EQUAL BY COOPER, SELUX, OR KIM LIGHTING	RD1 LED P4 30K ASY MMOLT RPA DBLXD RSS 25 4B DM28RAD DBLXD	85.7W/LED	3000K/11000L	BLACK	DARK SKY COMPLIANT LED POLE MOUNTED FIXTURE MOUNTED WITH A DOUBLE CONFIGURATION AT 25FT
B2	INTRIGUE LIGHTING OR EQUAL BY VISIONAIRE LIGHTING, FC OUTDOOR LIGHTING, OR KIM LIGHTING	AR 6 B 21LED 3K D 180HSS UNV42 BLK	41.2W/LED	3000K/2006L	BLACK	DARK SKY COMPLIANT LED BOLLARD FIXTURE WITH DOME TOP AND HOUSE SIDE SHIELD.

EX. Panel: A											
Location: MECHANICAL/STORAGE ROOM				Volts: 240/120				Surge Protection Device: NO			
Supply From: POWER CO. XFMR				Phases: 1				Main Type: MCB			
Mounting: SURFACE				Wires: 3				Mains Rating: 250			
Enclosure: NEMA 1				A.I.C. Rating: 10,000				MCB Rating: 250			
CKT	Note	LOAD	CB/P	TYPE	A	B	TYPE	CB/P	LOAD	Note	CKT
1		POLE MOUNTED / BOLLARD SITE LTG	20/2	L	0.34			50/2	ELECTRIC HEAT PUMP		2
3		-	-	L		0.34					4
5		DRY ER	30/2					25/2	CONDENSING UNIT		6
7		-	-								8
9		LIGHTING	20/1					20/1	OUTSIDE LIGHTS		10
11		RESTROOM LIGHTING	20/1					20/1	TRACK LIGHTING		12
13		LIGHTING	20/1					20/1	LIBRARY LIGHTING		14
15		LOWER LEVEL LIGHTS	20/1					20/1	MECHANICAL/STORAGE LIGHTING		16
17		SUMP PUMP	20/1					20/1	EFFLUENT PUMP		18
19		RECEPTACLES	20/1					20/1	WATER HEATER		20
21		SMOKE DUCT	20/1					20/1	RECEPTACLES		22
23		RECEPTACLES	20/1					20/1	WATER COOLER		24
25		KITCHEN RECEPTACLES	20/1					20/1	KITCHEN RECEPTACLES		26
27		RESTROOM RECEPTACLES	20/1					20/1	VIEWING RECEPTACLES		28
29		EXTERIOR RECEPTACLES	20/1					20/1	MICROWAVE		30
31		COPER	20/1					20/1	SENSOR FAUCET		32
33		BHD-1	20/1					20/1	BHD-1		34
35		WATER HEATER	20/1					20/1	WATER HEATER		36
37		COMPUTER	20/1					20/1	COMPUTER		38
39		BASEMENT DUCT DETECTOR	20/1					20/1	EXISTING LOAD.		40
41		WASHER	20/1		0.10		E	20/1	LIGHTING CONTROL PANEL		42
Kilowatts:					0.44	0.34					

EX. Panel: B											
Location: MECHANICAL/STORAGE ROOM				Volts: 240/120				Surge Protection Device: NO			
Supply From: POWER CO. XFMR				Phases: 1				Main Type: MCB			
Mounting: SURFACE				Wires: 3				Mains Rating: 250			
Enclosure: NEMA 1				A.I.C. Rating: 10,000				MCB Rating: 250			
CKT	Note	LOAD	CB/P	TYPE	A	B	TYPE	CB/P	LOAD	Note	CKT
1		GEO-THERMAL UNIT	80/2		0.25			50/2	SPARE		2
3		-	-					-			4
5		RECEPTACLES	20/1					60/2	GEO COMPRESSOR		6
7		OFFICE RECEPTACLES	20/1					-			8
9		LIGHTING	20/1					20/1	CEILING FANS		10
11		LIGHTING	20/1					20/1	OFFICE RECEPTACLES		12
13		DISHWASHER	20/1					20/2	BACK DOOR HEATER		14
15		DISPOSAL	20/1					-			16
17		OFFICE RECEPTACLES	20/1					20/1	J BOX FOR FUTURE DIGITAL KIOSK		18
19		OFFICE RECEPTACLES	20/1					20/2	OFFICE SPLIT UNIT		20
21		OFFICE CAN LTG	20/1					-			22
23		STOVE	20/2					30/2	WATER HEATER		24
25		-	-					-			26
27		BIRD SANCTUARY	50/2					50/2	SEWAGE LIFT PUMP		28
29		-	-					-			30
Kilowatts:					0.25	0.00					

ELECTRICAL SCHEDULES

DEER HAVEN PARK  
SITE ELECTRIC IMPROVEMENTS  
4183 LIBERTY ROAD  
DELAWARE, OH 43015

PREPARED FOR:  
PRESERVATION PARKS OF DELAWARE COUNTY  
2656 HOGBACK ROAD  
SUNBURY, OHIO 43074

**schorr architects inc.** 230 Bradenton Ave.  
Dublin, OH 43017  
(614)798-2096

Conforming / Bid: 08.21.2024

COMM. NO.: 2406

E2



ROGER D. FIELDS ASSOCIATES, INC.  
4588 Kenny Road  
Columbus, Ohio 43220  
(614) 451-2248  
www.rdfa.com  
Project #: 24002



Designer: LH

**ELECTRICAL GENERAL NOTES AND SPECIFICATIONS**

**26 00 00 ELECTRICAL SPECIFICATIONS**

1. ALL WORK SHALL BE PERFORMED IN ACCORDANCE WITH ALL APPLICABLE FEDERAL, STATE AND LOCAL CODES, TO INCLUDE THE NATIONAL ELECTRICAL CODE AND THE NATIONAL ELECTRICAL CODE.
2. ALL WORK SHALL BE PERFORMED BY LICENSED CONTRACTORS AS REQUIRED BY LOCAL AND STATE CODES.
3. ALL EQUIPMENT AND APPLIANCES INSTALLED ON THIS PROJECT SHALL BEAR THE LABEL OF AN APPROVED TESTING AGENCY, AND SHALL BE INSTALLED IN ACCORDANCE WITH THE MANUFACTURERS INSTRUCTIONS.
4. THIS CONTRACTOR SHALL ARRANGE FOR AND CONDUCT ALL INSPECTIONS, TESTS, AND APPROVALS OF ITS WORK AND SHALL BEAR ALL COST FOR SAME. INSPECTIONS SHALL BE PERFORMED BY AUTHORITY HAVING JURISDICTION.
5. ARCHITECT/ENGINEER SHALL SUBMIT DOCUMENTS FOR PLAN APPROVAL AND PAY COST TO SECURE PLAN APPROVAL. CONTRACTOR SHALL PAY FOR ANY ADDITIONAL PERMITS AND FEES.
6. PROTECT ALL EQUIPMENT AND MATERIAL DURING CONSTRUCTION FROM DAMAGE BY WEATHER, WATER, DIRT, AND OTHER CONSTRUCTION ACTIVITIES.
7. SUBMIT SHOP DRAWINGS FOR REVIEW BY ARCHITECT/ENGINEER PRIOR TO INSTALLATION. CONTRACTOR SHALL SUBMIT SHOP DRAWINGS EARLY ENOUGH IN PROJECT TO ALLOW AMPLE TIME FOR REVIEW WITHOUT CAUSING TIME DELAYS OR CONFLICTS IN THE JOB PROGRESS. SUBMITTALS SHALL BE IN ACCORDANCE WITH GENERAL CONDITIONS AND THE MANUFACTURERS LISTED ON THE DRAWINGS. SUBMITTALS SHALL BEAR THE STAMP OF THE CONTRACTOR SHOWING THAT IT IS REVIEWED AND APPROVED BY THEM AND THAT THEY ARE IN CONFORMANCE WITH THE CONTRACT DOCUMENTS. LACK OF SUCH CONTRACTOR APPROVAL WILL BE CAUSE FOR REJECTION WITHOUT REVIEW BY THE ARCHITECT/ENGINEER. WHERE TRADE NAMES, BRANDS OF MANUFACTURERS OF EQUIPMENT OR MATERIALS ARE SHOWN ON THE DRAWINGS OR SPECIFICATIONS THE EXACT EQUIPMENT SHALL BE USED ON THE PROJECT. THE USE OF ANY UNAUTHORIZED EQUIPMENT OR MATERIAL SHALL BE SUBJECT TO REMOVAL AND REPLACEMENT AT THE REQUEST OF THE OWNER, AT THE CONTRACTOR'S EXPENSE.
8. CHECK EACH NEW PIECE OF EQUIPMENT AND FIXTURES IN THE SYSTEM FOR DEFECTS, VERIFYING THAT ALL PARTS ARE PROPERLY FURNISHED AND INSTALLED, THAT ALL ITEMS FUNCTION PROPERLY, AND THAT ALL ADJUSTMENTS HAVE BEEN MADE.
9. ANY ROOF PATCHING IS TO BE DONE BY GENERAL CONTRACTOR.
10. CONTRACTOR MUST EXAMINE ALL AREAS AND CONDITIONS IN WHICH THE WORK IS TO BE DONE, AND NOTIFY THE ARCHITECT OF CONDITIONS DETRIMENTAL TO THE PROPER AND TIMELY COMPLETION OF THE WORK. DO NOT PROCEED WITH WORK UNTIL UNSATISFACTORY CONDITIONS HAVE BEEN CORRECTED.
11. MAINTAIN IN OPERATING CONDITION ALL ACTIVE BRANCH CIRCUITS DESIGNATED TO REMAIN. DOWNTIME MUST BE KEPT TO A MINIMUM. CONTRACTOR SHALL NOTIFY, AND OBTAIN APPROVAL FROM OWNER FOR ANY OUTAGES REQUIRED FOR THIS WORK. CONTRACTOR SHALL PROVIDE A MINIMUM OF (48) HOURS ADVANCE NOTICE FOR ANY OUTAGES.
12. CONTRACTOR SHALL LIMIT ITS ACTIVITIES TO AREAS OF THE BUILDING THAT ARE BEING RENOVATED. BUILDING ACCESS, STORAGE OF MATERIALS, DELIVERIES, PARKING, ETC. SHALL BE COORDINATED WITH THE OWNER'S REPRESENTATIVE.
13. CONTRACTOR SHALL BE RESPONSIBLE FOR THE IMPLEMENTATION OF SAFETY GUIDELINES TO REDUCE THE RISK OF INJURIES. CONTRACTOR SHALL BE RESPONSIBLE FOR REMOVAL OF EXCESS MATERIALS AND CLEANING OF DEBRIS ON A DAILY BASIS, AND SHALL BEAR THE COST OF SAME.
14. WORK SHALL BE CARRIED OUT IN A NEAT AND WORKMANLIKE MANNER SO THAT IT DOES NOT DAMAGE THE BUILDING.
15. MISCELLANEOUS ACCESSORIES:
  - A. PROVIDE ANY ADAPTERS, FITTINGS, TRIM, AND OTHER APPURTENANCES AS NECESSARY TO SECURELY INSTALL ALL ITEMS OF EQUIPMENT SPECIFIED OR SHOWN ON THE DRAWINGS.
  - B. THESE ACCESSORIES ARE REQUIRED EVEN THOUGH THEY MAY NOT BE SHOWN OR DETAILED ON THE DRAWINGS.
  - C. INSTALLATION SHALL BE COMPATIBLE WITH THE BUILDING CONSTRUCTION ON WHICH THE ITEM IS TO BE LOCATED.
  - D. VERIFY THE TYPE OF CONSTRUCTION PRIOR TO ORDERING THE EQUIPMENT ITEM, SO THAT ALL REQUIRED ACCESSORIES ARE INCLUDED.
16. INSTALL EQUIPMENT FOR EASY DISCONNECTION AND REPLACEMENT TO FACILITATE SERVICE, MAINTENANCE, REPAIR, REPLACEMENT OF COMPONENTS AND ELIMINATE INTERFERENCE WITH OTHER INSTALLATIONS.
17. CONTRACTOR SHALL CLEAN UP CONSTRUCTION DEBRIS RESULTING FROM CONTRACTOR'S WORK AS WELL AS ALL WORK AREAS AFFECTED BY CONTRACTOR'S WORK.
18. UPON COMPLETION OF WORK, ALL MATERIAL AND EQUIPMENT SHALL BE THOROUGHLY CLEANED OF STICKERS, DIRT, GREASE, RUST, OIL, AND OTHER FOREIGN MATTER.
19. PROVIDE ELECTRONIC COPIES OF REVIEWED SHOP DRAWINGS OF EACH EQUIPMENT ITEM TO OWNER. PROVIDE MARKED-UP RECORD DRAWINGS SHOWING ANY DEVIATIONS IN LOCATION OF EQUIPMENT, RECORD ADDENDUM AND CHANGE ORDER ITEMS, AT COMPLETION OF PROJECT DELIVER RECORD DRAWINGS AND ONE (1) BOUND 8-1/2"x11" OPERATING AND MAINTENANCE MANUAL TO ARCHITECT FOR REVIEW. PROVIDE OPERATING AND MAINTENANCE MANUAL IN PHYSICAL FORMAT AND A COPY ON A UNIVERSAL SERIAL BUS (USB) FLASH DRIVE.
20. REQUIREMENTS FOR COMPLETION OF WORK: FOR SUBSTANTIAL COMPLETION, PROVIDE ALL REQUIRED OPERATING TESTS, OPERATING AND MAINTENANCE MANUALS, INSTRUCTION OF OWNER'S PERSONNEL IN OPERATION OF ALL SYSTEMS, SPARE PARTS, AND SPECIAL TOOLS.
21. PROVIDE (1) FULL YEAR GUARANTEE FROM DATE OF FINAL COMPLETION ON ALL EQUIPMENT AND WORK PERFORMED, INCLUDING ANY EXISTING SYSTEM THAT IS RE-USED. CONTRACTOR SHALL WARRANT THAT THE WORK HAS BEEN COMPLETED IN COMPLIANCE WITH ESTABLISHED CODES AND REGULATIONS. CERTIFICATE SHALL BE GIVEN TO OWNER AT PROJECT COMPLETION.

**26 05 00 COMMON WORK RESULTS FOR ELECTRICAL**

1. CONTRACTOR SHALL VISIT SITE PRIOR TO BIDDING. BIDS SHALL SERVE AS EVIDENCE OF KNOWLEDGE OF EXISTING CONDITIONS. ALL REQUIREMENTS INCLUDING MODIFICATIONS WHICH ARE REQUIRED TO MEET THE INTENT OF THE DRAWINGS AND SPECIFICATIONS ARE TO BE OBTAINED BY ELECTRICAL CONTRACTOR PRIOR TO AND INCLUDED IN BID PRICE. FIELD VERIFY ALL EXISTING ELECTRICAL AND TELEPHONE EQUIPMENT, LOCATIONS, CONDITIONS, ETC. FAILURE TO VISIT THE SITE SHALL NOT RELIEVE THE CONTRACTOR FROM ANY RESPONSIBILITY IN THE PERFORMANCE OF THE ELECTRICAL WORK.
2. BRIEF SUMMARY OF WORK: FURNISH MATERIAL, LABOR, TOOLS, ACCESSORIES, AND EQUIPMENT TO COMPLETE AND LEAVE READY FOR OPERATION ALL SYSTEMS OF THIS PROJECT AS DESCRIBED IN THESE SPECIFICATIONS AND AS SHOWN ON THE DRAWINGS.
3. THE INSTALLATION SHALL BE COMPLETE IN EVERY RESPECT PROVIDING ALL LABOR AND MATERIALS.
4. THE REQUIREMENTS AS SET FORTH UNDER GENERAL CONDITIONS, INSTRUCTIONS TO BIDDERS AND GENERAL REQUIREMENTS ARE A PART OF THIS CONTRACT.
5. BIDS SHALL BE BASED ON A COMPLETE/FULL SET OF DRAWINGS.
6. CONTRACTOR MUST READ THE ENTIRE SPECIFICATIONS COVERING OTHER BRANCHES OF WORK AND IS RESPONSIBLE FOR COORDINATION OF THE WORK WITH WORK PERFORMED BY OTHER TRADES.
7. FURNISH ALL LABOR, MATERIALS, TESTING, EQUIPMENT, INCIDENTALS AND TOOLS TO PERFORM ELECTRICAL WORK SHOWN, NOTED OR SCHEDULED FOR A COMPLETE AND FINISHED INSTALLATION.
8. MATERIALS, PRODUCTS AND EQUIPMENT, INCLUDING ALL COMPONENTS THEREOF, SHALL BE NEW AND AS SUCH APPEAR ON THE UNDERWRITERS LABORATORIES LIST OF APPROVED ITEMS AND SHALL BE SIZED IN CONFORMITY WITH REQUIREMENTS OF THE 2023 NATIONAL ELECTRICAL CODE AND OTHER APPLICABLE CODES, WHICHEVER ARE MORE STRINGENT.
9. INCLUDE ANY LABOR AND MATERIALS NOT SPECIFICALLY MENTIONED, BUT NECESSARY TO PROVIDE A COMPLETE AND FULLY OPERATIVE ELECTRICAL SYSTEMS.
10. PROVIDE ALL DIRECTIONAL BORING OR EXCAVATION AND BACKFILL REQUIRED FOR INSTALLATION OF ELECTRICAL WORK, IF ANY. CONTRACTOR SHALL COORDINATE ROUTING AND LOCATE AND TOUCH EACH EXISTING UTILITY BEFORE ANY EXCAVATION WORK IS BEGUN. TRENCHES FOR BURIAL OF ELECTRICAL CONDUITS SHALL BE OF SUFFICIENT DEPTH SUCH THAT TOP OF HIGHEST CONDUIT IS NOT LESS THAN 24" BELOW FINISHED GRADE. NO LARGE ROCKS (OVER 2") OR OTHER DEBRIS THAT WOULD DAMAGE THE CONDUITS WILL BE PERMITTED. PLACE NO BACKFILL UNTIL UNDERGROUND CIRCUITS HAVE BEEN TESTED. COMPACT BACKFILL IN 6" DEEP LAYERS. PROVIDE SETON 6" WIDE RED METALLIC UNDERGROUND WARNING/DETECTION TAPE DETECTABLE WITH METAL DETECTOR FOR BURIED ELECTRIC LINE BELOW. INSTALL DETECTABLE WARNING TAPE 12" (MIN.) ABOVE UNDERGROUND INSTALLATION. PROVIDE SEED GRASS COVER TO RESTORE LANDSCAPE TO ORIGINAL CONDITION.
11. PROVIDE ROUGH-IN BOXES, WIRING, CONDUIT, AND FINAL CONNECTION FOR ALL ITEMS OF EQUIPMENT REQUIRING ELECTRICAL POWER. COORDINATE WITH EQUIPMENT SUPPLIERS AND OTHER CONTRACTORS REGARDING ROUGH-IN AND FINAL CONNECTIONS REQUIREMENTS, SUCH AS MOUNTING HEIGHT, PLUG-RECEPTACLE CONFIGURATIONS, WIRE AND BREAKER SIZE, AND SPECIAL GROUNDING.
12. ALL ELECTRICAL ITEMS SHOWN DASHED ARE TO BE DISCONNECTED AND REMOVED, INCLUDING WIRING AND CONDUIT, ALL THE WAY BACK TO THE SOURCE, EXCEPT AS OTHERWISE INDICATED.
13. CUTTING AND PATCHING. GENERAL TRADES CONTRACTOR SHALL PATCH FLOORS AND WALLS IN AREAS OF REMOVED WIRING. COORDINATE LOCATION OF CORE-DRILLING OF WALLS AND FLOORS WITH OTHER CONTRACTORS AND EQUIPMENT. GENERAL TRADES CONTRACTOR SHALL SAW-CUT EXISTING FLOOR SLAB AND PATCH FLOOR FOR NEW UNDERFLOOR CONDUITS. PROVIDE ALL OTHER CUTTING AND PATCHING REQUIRED FOR WORK. PATCH TO MATCH ADJACENT SURFACES. GENERAL TRADES CONTRACTOR SHALL PROVIDE PAINTING.
14. THIS CONTRACTOR SHALL BE RESPONSIBLE FOR DAMAGE TO THE WORK OF OTHER CONTRACTORS, OR THE BUILDING, OR ITS CONTENTS, PEOPLE, ETC. CAUSED BY ANY EQUIPMENT INSTALLED OR REUSED THROUGH EQUIPMENT FAILURE AND SHALL MAKE, AT ITS OWN EXPENSE, ALL REPAIRS TO MERCHANDISE, FIXTURES AND EQUIPMENT SO DAMAGED.
15. ALL ELECTRIC WORK SHALL BE INSTALLED SO AS TO BE READILY ACCESSIBLE FOR OPERATING, SERVICING, MAINTAINING AND REPAIRING. HANGERS SHALL INCLUDE ALL MISCELLANEOUS STEEL. INSTALLATION OF WORK AND SHALL BE FASTENED TO BUILDING STEEL, CONCRETE OR MASONRY, BUT NOT PIPING OR DUCTWORK. ALL CONDUIT SHALL BE CONCEALED WHEREVER POSSIBLE. EXPOSED CONDUITS SHALL BE IN STRAIGHT LINES PARALLEL WITH OR AT RIGHT ANGLES TO COLUMN LINES OR BEAMS AND SEPARATED AT LEAST 3 INCHES FROM WATER LINES WHEREVER THEY RUN ALONGSIDE OR ACROSS SUCH LINES. ALL CONDUCTORS SHALL BE INSTALLED IN CONDUIT, OR OTHER CODE APPROVED RACEWAYS.
16. ALL LINE AND LOW VOLTAGE POWER AND CONTROL WIRING SHALL BE PROVIDED BY THE ELECTRICAL CONTRACTOR.
17. SLEEVES SHALL EXTEND AT LEAST TWO (2") INCHES ABOVE FINISHED FLOOR AND ALL SLEEVES, OPENINGS, ETC., THROUGH FIRE RATED WALLS AND FLOORS SHALL BE FIRE SEALED WITH CALCIUM SILICATE, SILICONE RTV, FOAM, "3M" FIRE RATED SEALANTS OR EQUAL BY HILT AFTER CONDUIT/CABLES INSTALLATION SO AS TO RETAIN THE FIRE RATING. PATCHES SHALL MATCH ADJACENT SURFACES.
18. THE LOCATION OF OUTLETS AND EQUIPMENT SHOWN ON THE DRAWINGS ARE APPROXIMATE AND THE

ARCHITECT/OWNER/CONSTRUCTION MANAGER SHALL HAVE THE RIGHT TO RELOCATE ANY OUTLETS, EQUIPMENT, OR FIXTURES BEFORE THEY ARE INSTALLED WITHOUT ADDITIONAL COST. COORDINATE DEVICE LOCATIONS.  
24. FURNISH APPROVED CERTIFICATE OF FINAL INSPECTION, AND TURN OVER TO OWNER AT COMPLETION OF PROJECT.  
25. GENERAL TRADES CONTRACTOR SHALL PROVIDE CONCRETE PADS AND BASES. COORDINATE PLACEMENT OF CONDUITS AND ANCHOR BOLTS WITH THE GENERAL TRADES CONTRACTOR.

**26 05 05 SELECTIVE DEMOLITION FOR ELECTRICAL**

1. THE ELECTRICAL CONTRACTOR IS RESPONSIBLE FOR ANY/ALL NECESSARY ELECTRICAL DEMOLITION WORK THAT IS REQUIRED TO FACILITATE THE NEW INSTALLATION. FIELD COORDINATE PRIOR TO BIDS. REMOVE AND/OR MODIFY EXISTING EQUIPMENT, ETC. AS REQUIRED FOR A COMPLETE INSTALLATION. ANY EQUIPMENT OR DEVICE REMAINING IN USE AFTER PART OF THE EQUIPMENT OR DEVICES HAVE BEEN REMOVED ARE TO BE RECONNECTED TO EXISTING OR NEW CIRCUITS AND LEFT IN WORKING ORDER. FEEDERS TO PANELS AND WIRING TO OTHER EQUIPMENT TO BE ROUTED CONCEALED IN FINISHED AREAS. CONTRACTOR SHALL NOTIFY, AND OBTAIN APPROVAL FROM OWNER FOR ANY OUTAGES REQUIRED FOR THIS WORK.
2. DURING THE COURSE OF WORK, IF ANY ASBESTOS IS ENCOUNTERED, CONTRACTOR SHALL IMMEDIATELY CEASE ALL WORK ASSOCIATED THEREWITH AND IMMEDIATELY NOTIFY THE A/E AND OWNER. CONTRACTOR SHALL NOT REMOVE OR DISTURB ANY MATERIAL SUSPECTED OF, OR IDENTIFIED AS, CONTAINING ASBESTOS. OWNER SHALL REMOVE OR SEAL SUCH MATERIALS PRIOR TO ANY WORK UNDER THIS CONTRACT.
3. DISCONNECT AND REMOVE ALL EXISTING CONDUITS AND RACEWAYS NO LONGER BEING USED WHETHER SHOWN ON THE DRAWING OR NOT.

**26 05 19 LOW-VOLTAGE ELECTRICAL POWER CONDUCTORS AND CABLES**

1. WIRE SHALL BE SINGLE CONDUCTOR COPPER WITH 600 VOLT INSULATION. MINIMUM WIRE SIZE SHALL BE #12 AWG. ALL WIRE AND CABLE SHALL BE NEW AND SHALL BE BROUGHT TO THE SITE IN UNBROKEN PACKAGES. ALL WIRING OF ANY TYPE SHALL BE IN CONDUIT. NO STRANDED WIRE ALLOWED FOR #10 AND #12 AWG SIZES. INCREASE CONDUCTOR BY ONE SIZE FOR EVERY 150' INCREMENT OF DISTANCE FROM THE PANELBOARD FOR 120 VOLT CIRCUITS).
2. THE USE OF MC, AC, OR NM (ROMEX) TYPE CABLE IS PERMITTED.
3. GENERAL WIRING SHALL BE RATED AT 600V AND BE XHHW, TWHN OR THHN (ALUMINUM CONDUCTORS ARE NOT PERMITTED) AS MANUFACTURED BY SERVICE WIRE, CERROWIRE, HOUSTON WIRE AND CABLE, ENCORE WIRE, SOUTHWIRE, OMNI CABLE, OR SUPERIOR ESSEX.
4. WIRE CONNECTORS SHALL BE EQUAL TO SCOTCHLOK FOR #8 AND SMALLER, AND EQUAL TO T & B "LOCK-TITE" FOR #6 AND LARGER. EQUAL BY POLARIS, ILSCO, ARLINGTON INDUSTRIES, OR BUCHANAN.
5. ALL WIRING TO BE COLOR CODED AS FOLLOWS:  
  
120/240 VOLT SYSTEM  
NEUTRAL-WHITE  
PHASE A OR L1-BLACK  
PHASE B OR L2-RED  
GROUND-GREEN
6. OPTION: MULTICONDUCTOR CABLE. UNLESS OTHERWISE EXCLUDED, THE FOLLOWING OPTION MAY BE USED IN LIEU OF WIRE AND CONDUIT ONLY WHERE CONCEALED AND WHERE PERMITTED BY AHJ.
  - A. TYPE MC COPPER CONDUCTORS, 90 EGREES C., INSULATED GREEN GROUNDING CONDUCTOR INSTALLED IN ACCORDANCE WITH NEC ARTICLE 330, INTERLOCKED ALUMINUM METAL SHEATH SHALL BE IDENTIFIED AS SUITABLE FOR GROUND RETURN PATH.

**26 05 26 GROUNDING AND BONDING FOR ELECTRICAL SYSTEMS**

8. FURNISH AND INSTALL A COMPLETE WIRED GROUNDING SYSTEM FOR ELECTRICAL EQUIPMENT AND CIRCUITS AS SHOWN ON THE DRAWINGS. ALL GROUNDING PROVIDED SHALL BE ACCORDING TO NEC ARTICLE 250 AND AS DESCRIBED BELOW.
9. ALL ENCLOSURES AND NON-CURRENT CARRYING METALS TO BE GROUNDED. CONDUIT SYSTEM TO BE ELECTRICALLY CONTINUOUS. ALL LOCK NUTS MUST CUT THROUGH ENAMELED OR PAINTED SURFACES ON ENCLOSURES. WHERE ENCLOSURES AND NON-CURRENT CARRYING METALS ARE ISOLATED FROM THE CONDUIT SYSTEM, USE BONDING JUMPERS WITH APPROVED CLAMPS.
10. ALL GROUNDING CONDUCTORS SHALL BE GREEN, WHERE EXPOSED IN PANEL, SWITCHBOARD, OUTLET, BOXES, ETC.
11. RUN A SEPARATE GROUNDING CONDUCTOR IN EACH CONDUIT, #12 MINIMUM, OR AS SHOWN ON DRAWINGS. FOR BRANCH CIRCUITS AND PANEL FEEDERS BOND THE GROUNDING CONDUCTOR TO THE CONDUIT, WHERE ENTERING AND LEAVING THE CONDUIT. ALL GROUND CLAMPS SHALL BE PENN-UNION OR EQUAL, SIMILAR TO "GPL" TYPE. CONDUIT GROUND BUSHINGS SHALL BE THOMAS & BETTS OR EQUAL, SIMILAR TO #3800 SERIES WITH NYLON INSULATED THROAT.
12. ALL DEVICES SHALL BE BONDED TO THE CONDUIT SYSTEM. USE A BONDING JUMPER BETWEEN THE OUTLET BOX AND THE DEVICE GROUNDING TERMINAL. METAL-TO-METAL CONTACT BETWEEN THE DEVICE YOKE AND THE OUTLET BOX IS NOT ACCEPTABLE AS A BOND FOR EITHER SURFACE MOUNTED BOXES OR FLUSH TYPE BOXES. ALL JUNCTION BOXES, OUTLET BOXES AND PULL BOXES SHALL BE BONDED TO THE CONDUIT SYSTEM. ALL FLEXIBLE CONDUIT SHALL BE JUMPERED WITH A GROUND CONDUCTOR.

**26 05 33 RACEWAY AND BOXES FOR ELECTRICAL SYSTEMS**

1. MINIMUM SIZES OF CONDUITS SHALL BE 3/4" FOR STANDARD CONDUIT, 1" FOR SITE CONDUIT, AND 1/2" FOR FLEX CONDUIT AND LOW VOLTAGE WIRING. ELECTRIC METALLIC TUBING (EMT) SHALL BE GALVANIZED OR ELECTRO-GALVANIZED. FITTINGS SHALL BE SET SCREW OR COMPRESSION TYPE, FITTING SHALL BE AS MANUFACTURED BY REGEL, STEEL CITY, RACO, T & B, EFCOR OR EQUAL.
2. OUTLET BOXES AND COVERS SHALL BE GALVANIZED, ONE-PIECE PRESSED STEEL KNOCKOUT.
3. JUNCTION, PULL BOXES AND COVERS SHALL BE GALVANIZED STEEL, CODE GAUGE SIZE.
4. WIREWAYS SHALL BE RIGID, HEAVY-GAUGE, STEEL WITH HINGED/SCREW-ON COVERS AND BAKED ENAMEL FINISH. SQUARE D, HOFFMAN, NIEDAX, HAMMOND, OR WIEGMAN. PROVIDE SIZE AS INDICATED ON THE DRAWINGS.
5. GRADE MOUNTED PULL BOXES SHALL BE WATERTIGHT, OPEN BOTTOM, HEAVY DUTY GASKETED COVERS, TIER 15, SUITABLE FOR OCCASIONAL NON-DELIBERATE VEHICLE DRIVE OVER APPLICATION WITH LOGO, SIZED AS REQUIRED. QUAZITE, NET-TECH, SYNERTEC, OR HIGHLINE.
6. SHALLOW 1-1/2 IN. DEEP BOXES MAY BE USED ONLY IN WALLS TOO THIN FOR STANDARD DEPTH BOXES. BOXES FOR SURFACE CONDUIT WORK AND IN WET LOCATIONS SHALL BE FS SERIES. EXTERIOR EXPOSED BOXES SHALL BE WEATHERPROOF WITH GASKETS. PAINT ALL BOXES CONTAINING FIRE ALARM WIRING RED. APPLETON, RACO, STEEL CITY, THOMAS & BETTS, NATIONAL ELECTRIC, OR CROUSE HINDS.
7. CONDUIT SHALL BE STANDARD STEEL RIGID, IMC OR EMT (THIN WALL) ACCORDING TO LOCAL CODE. CONDUIT SHALL BE CONCEALED IN FINISHED AREAS, EXCEPT AS OTHERWISE APPROVED BY ARCHITECT. REPUBLIC, ALLIED, STEEL DUCT, SHAMROCK, OMEGA, WESTERN TUBES, WHEATLAND, OR LTV. EMT CONNECTIONS SHALL BE COMPRESSION OR SET SCREW TYPE.
8. PAINTING OF ELECTRICAL CONDUITS, ETC., IF REQUIRED, WILL BE BY GENERAL CONTRACTOR.
9. MAXIMUM CONDUIT HANGER SPACING SHALL BE 8'-0" FOR 3/4" THRU 1 1/4" AND 10'-0" FOR 1 1/2" THRU 4" CONDUITS. DO NOT SUPPORT CONDUIT FROM PIPING, DUCTWORK, OR CEILING SYSTEM.
10. LEAVE A #10 AWG PULL WIRE OR NYLON PULL STRING IN ALL EMPTY CONDUITS.
11. FLASH AND COUNTERFLASH ALL RACEWAYS WHICH PENETRATE THE ROOF OR USE PITCH POCKETS. INSURE THAT PENETRATIONS ARE COMPLETELY WEATHERPROOF. ALL RACEWAY SYSTEMS EXPOSED TO THE WEATHER SHALL BE WEATHERPROOF. PRIOR APPROVAL BY LANDLORD IS REQUIRED TO ADD ADDITIONAL EQUIPMENT LOADS TO STRUCTURE OR TO MAKE HOLES IN EXISTING ROOF. NOTIFY LANDLORD'S ROOFING CONTRACTOR AT LEAST 72 HOURS PRIOR TO ANY REQUIRED ROOF WORK.
12. 1-1/2 IN. OR LARGER INTERIOR AND EXPOSED CONDUITS INSTALLED WITHIN 8 FT. OF FINISHED FLOOR MUST BE RIGID OR INTERMEDIATE. ALL OTHER CONDUITS SHALL BE EMT WITH INSULATED BUSHINGS AND THROAT FITTINGS 3/4" (MIN.). UNDERGROUND AND BELOW SLAB CONDUITS SHALL BE 1" (MIN.), SCHEDULE 40 PVC AND TERMINATE BELOW GRADE OR THE SLAB AND CONNECT TO RIGID STEEL OR INTERMEDIATE METAL RISER CONDUIT. CONDUITS EXPOSED OUTDOORS MUST BE RIGID STEEL.
13. CONTRACTOR SHALL USE APPROVED, UL-LISTED, FIRE-RETARDANT SEALANTS, BACKING, AND NEW PACKING AS REQUIRED TO MAINTAIN FIRE RATING OF THE STRUCTURE PENETRATED BY NEW CONDUITS. SPRAY-UL-LISTED FOAM SEALANT AROUND WIRES IN NEW CONDUITS.
14. INSTALL BOXES RIGIDLY ON BUILDING STRUCTURE AND SUPPORT INDEPENDENTLY OF THE CONDUIT SYSTEM USING FASTENERS SUCH AS "CADDY CLIPS" OR EQUAL. ALSO PROVIDE SUITABLE/PROPER BOX EXTENSIONS TO EXTEND BOXES TO FINISHED FACES OF WALLS ETC. ALL OUTLET BOXES TO HAVE SUITABLE BLOCKING BEHIND THEM TO MINIMIZE THE DEFLECTION THAT OCCURS WHEN PLUGGING/UNPLUGGING INTO THESE DEVICES.
15. PROVIDE EXPANSION FITTINGS WHERE CONDUITS EMERGE AND RISE UP FROM BELOW GRADE TO RISER CONDUITS.

**26 09 23 LIGHTING CONTROL DEVICES**

1. SEE SHEET E1, "DEER HAVEN ELECTRICAL PLANS" FOR LIGHTING CONTROL DETAILS.

**26 24 16 PANELBOARDS**

1. PROVIDE FULL-SIZE BREAKERS. ALL C/B SHALL BE OF QUICK-MAKE AND QUICK-BREAK DESIGN, THERMAL MAGNETIC-TYPE PLUG-IN BREAKERS, TRIP-FREE AND TRIP-INDICATING, AND COPPER BUS. ALL MULTI-POL BREAKERS SHALL BE COMMON TRIP. EXISTING PANEL IS SQUARE D NO SERIES. MATCH EXISTING BREAKER TYPE. TAG ALL BRANCH CIRCUITS AND PROVIDE TYPED WRITTEN CIRCUIT DIRECTORY IN DOOR.

**26 28 00 LOW-VOLTAGE CIRCUIT PROTECTIVE DEVICES**

1. PROVIDE ENCLOSED MOLDED CASE CIRCUIT BREAKER AS CALLED FOR ON THE DRAWINGS AND AS REQUIRED BY CODE. CIRCUIT BREAKER SHALL COMPLY WITH UL 98, NEMA, AND ANSI. MINIMUM INTERRUPTING CAPACITY AS SHOWN ON THE DRAWINGS. THERMAL MAGNETIC AND TRIPPED CIRCUIT BREAKER IN NEMA 1 ENCLOSURE AS MANUFACTURED BY GE, SQUARE D, SIEMENS OR EATON.
2. NEW OR REFURBISHED CIRCUIT BREAKERS SHALL BE COMPATIBLE WITH EXISTING PANELBOARDS/DISTRIBUTION PANELS/SWITCHBOARDS.

**26 50 00 LIGHTING**

1. ELECTRICAL CONTRACTOR SHALL PROVIDE AND INSTALL ALL FIXTURES AND LAMPS. ALL FIXTURES AND LAMPS SHALL BE UL LISTED. LIGHTING FIXTURES AND LAMPS SHALL BE FURNISHED AS SCHEDULED ON THE LIGHTING FIXTURE SCHEDULE.

**27 00 00 COMMUNICATIONS SPECIFICATIONS**

1. THIS WORK IS PART OF THE ELECTRICAL WORK. REFER TO SECTION 27 05 28 AND 27 11 00.

**27 05 28 PATHWAYS FOR COMMUNICATIONS**

1. COORDINATE ROUGH-IN LOCATIONS OF LOW VOLTAGE OUTLETS, AND PROVIDE ALL NECESSARY PATHWAYS WITH PULL WIRE AND JUNCTION BOX FOR LOW-VOLTAGE ROUGH-IN LOCATIONS. THE OWNER SHALL PROVIDE THE FOLLOWING WORK DIRECTLY OR THROUGH A SEPARATELY NEGOTIATED CONTRACT. CLOSELY FIELD COORDINATE WITH OWNERS TECHNOLOGY CONTRACTOR.
  - I. TELEPHONES, JACKS, COVER PLATES, WIRING, AND FINAL CONNECTIONS.
  - J. COMPUTERS, CONNECTORS, JACKS, COVER PLATES, CABLING, AND FINAL CONNECTION.
  - K. SECURITY SYSTEM COMPONENTS, ROUGH-IN, WIRING, AND FINAL CONNECTION.
  - L. TELEVISION RECEIVERS, CONNECTORS, COVER PLATES, CABLING, AND FINAL CONNECTION.
  - M. ACCESS CONTROL.

**ELECTRICAL SPECIFICATIONS**

DEER HAVEN PARK  
SITE ELECTRIC IMPROVEMENTS  
4183 LIBERTY ROAD  
DELAWARE, OH 43015

PREPARED FOR:  
PRESERVATION PARKS OF DELAWARE COUNTY  
2656 HOGBACK ROAD  
SUNBURY, OHIO 43074

**schorr architects inc.** 230 Bradenton Ave.  
Dublin, OH 43017  
(614)798-2096

Conforming / Bid: 08.21.2024

COMM. NO.: 2406

E3

ROGER D. FIELDS ASSOCIATES, INC.  
4588 Kenny Road  
Columbus, Ohio 43220  
(614) 451-2248  
www.rdfa.com  
Project #: 24002  
Designer: LH

